

## INSIDE THIS ISSUE

Draft Minutes of 3/19/2010 State Board Meeting  
2009 Busy for CET&LC  
BCHC at Equine Affaire, Pomona  
Lostness (Book Reviews)  
Rendezvous 2010 Highlights & Awards  
Unit News

For more BCHC information, see our website:  
[bchcalifornia.org](http://bchcalifornia.org)

### BCHC

Backcountry Horsemen of California  
P.O. Box 40007  
Bakersfield, CA 93384-0007  
ADDRESS SERVICE REQUESTED

NON PROFIT  
Organization  
U.S. Postage  
PAID  
Manteca, CA  
95336  
No. 43

# The Backcountry News



Volume 17, Issue 2

The Official Quarterly Publication of Backcountry Horsemen of California

Spring/Summer 2010

*Concerned men and women dedicated to Gentle Use of California trails and back country*

## LOS PADRES UNIT (*almost*) SWEEPS AWARDS!

Los Padres' Nancy Kimmel, Education Chair, and Dave Rigoli, President, (pictured here) hardly had a chance to sit down as they proudly accepted award after award during Rendezvous' Friday Night Dinner, March 19<sup>th</sup>. First Nancy received the Top Hand award for her unit. Then Lisa Deas and Dan Horn, Co-VPs of Education, presented the Unit BOTH Individual and Unit Education awards (each accompanied by a \$150 check). If that wasn't enough, Carrie Johnen, 2<sup>nd</sup> VP, honored Los Padres for the largest number of Volunteer Service hours contributed by a Unit. (Los Padres contributed over \$669,689 of BCHC \$2.6 million total.) AND Bill Chaides, Los Padres' Vice President, received the coveted Ben York Trail Blazer Award from BCHC Past Presidents and was recognized for his volunteer work with the Forest Service.



In the past two years Los Padres has grown to be the largest BCHC unit in California. They have discovered the secret of recruiting new members through their varied and fun events – particularly noteworthy are their Halloween parties and Fall campout for families.

**WHAT A GREAT UNIT!! CONGRATULATIONS, LOS PADRES!!**

*See additional photos of Los Padres winners on page 17.*

# The Backcountry News

*A Quarterly Publication of the Backcountry Horsemen of California*  
*Editor • Carol Jo Hargreaves*  
1229 Maple Hill Ct, Manteca, CA 95336-5125  
(209) 988-5831  
Email: [news@bchcalifornia.org](mailto:news@bchcalifornia.org) / or [cjohargreaves@clearwire.net](mailto:cjohargreaves@clearwire.net)  
Backcountry Horsemen of California Official Website: [www.bchcalifornia.org](http://www.bchcalifornia.org)  
Printed by The Manteca Bulletin and distributed by The Oakdale Leader

**Publication Information:** The Backcountry News is the official journal of the Backcountry Horsemen of California, Inc., published four times per year (three times in 2009). All rights reserved. It is an independent publication with news and information of interest to Backcountry Horsemen members, with an average circulation of over 3,000 per issue. Annual subscriptions are \$15.00 for non-members. Non-Profit postage paid at Manteca, CA.

**Who Is BCHC?** The Backcountry Horsemen of California, Inc. is a 501 (c) (4) non profit organization incorporated in the State of California, March 13, 1990, with a 501 (c) (3) education foundation established in 2007. The Backcountry Horsemen of California Inc., reserves the right to refuse any advertisements and/or articles that are inconsistent with the Backcountry Horsemen of California's objectives and purpose statement. Other material will be printed at the Editor's discretion.

**Disclaimer:** Articles and advertisements that appear in The Backcountry News do not necessarily reflect the position or opinion of BCHC or its officers and members. Nor does publication of said articles and advertisements constitute an endorsement of views or of the goods or services offered therein that they may express. Accuracy of all material is the sole responsibility of the authors. BCHC is not responsible for unsolicited material of any kind.

**Reader Submission** - The Backcountry News welcomes reader contributions, event and calendar dates, and Unit news. These will be printed on a space-available basis. Submissions may be sent on disk in a Microsoft Word format, emailed or sent by regular mail. Longer articles are subject to edit for space at the discretion of the Editor. Photos will not be returned.

**Deadlines** - Advertising, announcements, pictures and other copy must be received at The Backcountry News by the deadlines listed below.

Deadline	Publication Date
August 6, 2010	September 2010 - Fall
December 10, 2010	January 2010 - Winter
April 15, 2011	May 2011 - Spring/Summer

**Advertising Rates Per Issue:** Rates effective January 2005. All ads must be paid for in advance. Multiple insertion discounts apply to ads placed in consecutive issues.

Number of Issues:	1	2	3	4	 Cost per issue
Full Page	\$150.00	\$142.50	\$135.00	\$127.50	
Half Page (h/v)	\$100.00	\$95.00	\$90.00	\$85.00	
Quarter Page (h/v)	\$80.00	\$76.00	\$72.00	\$68.00	
Bus. Card (h/v)	\$25.00	\$23.75	\$22.50	\$21.25	

**Advertising:** All ads must be sent camera ready and sized to fit. If sending by email, all ads must be at least 300 dpi, in tiff (.tif) format, and must include all fonts, pictures, and graphics used. Mail payment to the BCHC Treasurer. Checks returned from the bank will have a \$25.00 return check fee. No advertising will be accepted from advertisers with outstanding balances. Liability by The Backcountry News shall not exceed the space occupied by the error. Never shall The Backcountry News be liable for any general, special or consequential damages. All claims for adjustments must be made within 30 days of the first publication of said ad.

## 2010 Executive Committee

**President**  
Larry Shuman • (530) 526-0590 or (530) 941-8529 • [shuman@hughes.net](mailto:shuman@hughes.net)  
**1st Vice-President**  
Garry Stauber • (408) 772-7613 • [gstauber@equestmagazine.com](mailto:gstauber@equestmagazine.com)  
**2nd Vice-President**  
Carrie Johnen • (209) 304-5724 • [cjubilee@comcast.net](mailto:cjubilee@comcast.net)  
**Secretary**  
Kaye Bruns • (661) 944-4927 • [kowgrl@juno.com](mailto:kowgrl@juno.com)  
**Treasurer**  
Lynn Joiner • (661) 747-6347 • [lynnjoiner@sbcglobal.net](mailto:lynnjoiner@sbcglobal.net)  
**Co-Vice Presidents of Public Lands**  
Bruce DeMott • (209) 599-2620 • [demott9@aol.com](mailto:demott9@aol.com)  
Ruth Gerson • (818) 991-1236 • [RuthGerson@aol.com](mailto:RuthGerson@aol.com)  
**Co-Vice Presidents of Education**  
Lisa Deas • (831) 402-7482 • [muledaze@yahoo.com](mailto:muledaze@yahoo.com)  
Dan Horn • (707) 544-4543 • [bearstrap@msn.com](mailto:bearstrap@msn.com)  
**BCHA National Directors**  
Michael Murphy • (707) 332-1195 • [m\\_murphy@sonic.net](mailto:m_murphy@sonic.net)  
Ann Lange • (760) 378-2113 • [kvvet@onemain.com](mailto:kvvet@onemain.com)  
**BCHA Alternate Director**  
Dan Clifford • (619) 659-3038 • [bigeasycowboy@mac.com](mailto:bigeasycowboy@mac.com)  
**Past President**  
Paul "Chip" Herzig • (951) 769-3781 • [chryvchip@msn.com](mailto:chryvchip@msn.com)

## 2010 State Coordinators

**Accounting**  
Weir and Associates • (661) 323-1514  
**Annual Meeting**  
Kaye Bruns • (661) 944-4927 • [kowgrl@juno.com](mailto:kowgrl@juno.com)  
**Editor**  
Carol Jo Hargreaves • (209) 988-5831 • [news@bchcalifornia.org](mailto:news@bchcalifornia.org)  
**Insurance**  
Garry Stauber • (408) 772-7613 • [gstauber@equestmagazine.com](mailto:gstauber@equestmagazine.com)  
**Membership**  
Karen Harper • (866) 748-2033 or (209) 373-6442 • [membership@bchcalifornia.org](mailto:membership@bchcalifornia.org)  
**Rendezvous 2011**  
General Chairman: Larry Shuman • (530) 526-0590 or (530) 941-8529 • [shuman@hughes.net](mailto:shuman@hughes.net)  
**Web Coordinator**  
Lisa Deas • (831) 402-7482 • [muledaze@yahoo.com](mailto:muledaze@yahoo.com)

## Membership Matters

Contact Membership Coordinator, Karen Harper.  
She'll be happy to address any of your questions or concerns.  
Karen can be reached Monday through Friday,  
*Toll free:* 1-866-748-2033  
*By mail:* P.O. Box 1610, Oakdale, CA 95361-1610  
*Or by email:* [membership@bchcalifornia.org](mailto:membership@bchcalifornia.org)



## President's Page



### *President's Message:*

## **THANK YOU, RENDEZVOUS PLANNERS AND HELPERS!**

I want to thank everyone who helped with the 2010 Rendezvous. Your efforts made the Rendezvous a resounding success. I have had a lot of compliments on the event and comments from attendees on the great time they had. The focus on the kids - our future was a great idea. I especially want to thank the Rendezvous Committee and the Education Committee for their last ditch efforts to pull off the event. I know there were others not on either committee who also did an outstanding job and I thank them, too.

Before we left Rendezvous 2010 we started planning for 2011. Rendezvous will take place at Tehama County Fairgrounds in Red Bluff the first weekend in April 2011 (April 1-3). As I write this we are getting ready for our first planning session in Red Bluff. Each year we get together and hash out ideas to improve, enhance, and compliment the Rendezvous experience. We appreciate any ideas you want to share for our next event - do not be shy about putting them forward. You can call or email your suggestions to me and I will make sure they get to all of the planners. Since we got youth involved in 2010, I would especially appreciate more ideas on increasing youth involvement in future Rendezvous.

Summer is approaching and it is time to start getting the equipment ready, the stock in shape and, of course, getting us in shape. Last year was phenomenal with \$2.6 million in Volunteer Service output from BCHC Units. I think this year will even be larger. I was talking to Alan Hill the other day about Shasta Trinity Unit's summer plans. Looks like a lot of work! I also talked to Jimmy Galvan of the California Conservation Corps this past week. He rode up with Rose and me to a Top of the State board meeting so he could give a presentation. Jimmy heads up the spike crews in the North State out of the Redding office and he says they have a very full summer ahead and will be relying on BCHC for a lot of support for the projects they are involved in. If the rest of the state is the same we will all be busy this year.

Alan Hill and I attended the first meetings for the new Planning Rule for Region 5. When it goes into effect the new Planning Rule will play a major part in how our National Forests are managed. The session was very interesting. We were filled in on what was taking place then we broke into small groups to discuss and brainstorm ideas we hope the Forest Service will use in implementation of the new Rule. If you want more information or want to be involved go to <http://fs.usda.gov/planningrule> or for Region 5 only go to <http://www.fs.fed.us/r5/planningrule/>

We are so lucky to live in a state that has such variety of scenery, majestic mountains, lakes and streams to enjoy so please be safe. I hope to see you in Red Bluff next April (if not before)!



**NOTICE:** As a cost-saving measure, we will only publish 3 editions of The Backcountry News in 2010.

### OBJECTIVES AND PURPOSE of the BACKCOUNTRY HORSEMEN OF CALIFOR-

- To improve and promote the use, care and development of California backcountry trails, campsites, streams and meadows; to advocate good trail manners.
- To promote the conservation and utilization of our backcountry resources in concert with livestock transportation.
- To keep the backcountry trails and forage areas open to horsemen on all public lands.
- To keep current information before the Corporation membership and its local Units regarding new legislation or management plans related to government regulations of the backcountry.
- To support or oppose new proposals, plans and restrictions as related to the interest of horsemen and those persons interested in recreational stock use and enjoying the backcountry.
- To promote the interest of people who, due to health or physical factors, need transportation other than by foot on backcountry trails.
- To promote public awareness and interest in the historical aspect of horsemen and stock in the backcountry and to help educate backcountry users on ways to use the trail and forage in a manner that conserves the backcountry resources.
- To assist in keeping the public informed of the vital need for a clean backcountry.
- To promote a working relationship with and keep the work and interests of the Corporation before our local, state and federal officials.

# Draft State Board Meeting Minutes

DRAFT

## BACKCOUNTRY HORSEMEN OF CALIFORNIA STATE BOARD OF DIRECTORS MEETING

Friday, March 19, 2010

Merced Fairgrounds, Merced, California

**A. Call to Order:** The meeting was called to order at 1:55 p.m. by President Larry Shuman.

**B. Roll Call:** Attendance was taken as Unit Directors signed in.  
Unit not represented: High Country (second time)

**C. Minutes:** Gail Lyons made the motion to approve the Minutes of October 10, 2009.

Second by Michael King. Motion carried.

**D. Secretary's Report/Correspondence:** Kaye Bruns reported her correspondence since the October 2009 State Meeting. (attached to Minutes in Secretary's notebook)

### **E. REPORTS**

**Treasurer's Report:** Lynn Joiner explained the Rendezvous Report

- expenditures: out go for 2010 Rendezvous
- 501C3 account: donations
- 501C4 account: membership dues
- C4 account can donate to the C3 account to cover Rendezvous
- need income from 2009 report added to the 501C3 2010 report
- 501C3: donations and \$25,000 from the tobacco money
- Rendezvous bills need to get to Lynn as soon as possible
- need a meeting to set the budget for 2011

### **BCHA Action Report:**

Michael Murphy reported on the following:

- Wilderness Society's Relationship
- National Park Service: Rick Potts
- Terry Morrison from Utah
- BCHA meeting in Bronson, Missouri
- Forest Service Planning and Trail Classification
- Dennis Daly: Public Lands 101

Ann Lange reported on the following:

- BCHA Board of Directors sub-committee 8-10 people
  - telephone conference four times a year to organize and move forward
- public lands message not getting down to the general public
- BCHA, 5-7 minute DVD to give an overview of backcountry issues

- American Horse Council: getting information on trails-pack stock on public lands
  - website will allow people to fill out forms on trails.
- Santa Barbara Trail Council: very supportive of horse/trail use
- BCHA working on system to get information down to the local levels
- Berkeley Wilderness Conference: April 8-11, 2010
  - BCHA donated \$500.00 and Kern Sierra donated \$500.00
- Grand Canyon Environmental Assessment: not supporting commercial packers

Alan Hill reported on the following:

- Hike the Hill in Washington, D.C.
- Appalachian Trails: shortage of funds
- American Hiking Society: wanting more money for trails
- Partnership for Natural Trails: advocates to build and maintain trails
- raise level of interest and advocacy for trails
- purpose: to emphasize to agencies importance of trails and money
- Wilderness Riders Flyer was well received

**Insurance Report:** Before the meeting started, Garry Stauber handed out and gave instructions on how to complete the forms.

- collection of forms
- fourth year of no increase in insurance costs
- each unit will continue to pay their insurance costs. Paid per capita: \$4.60
- need information at least 1-2 weeks in advance

**Membership Report:** Karen Harper reported on

- donation listed on membership forms
- current unit membership roster in packet
- demographics per unit
- BCHC gained a net of 4 members in 2009

### **Education Committee:**

Dan Horn reported on the following:

- approve the flyers
  - Equine First Aid: motion by Dave Rigoli, 2<sup>nd</sup> by Pete Spencer, motion carried
  - Bees: motion by Gail Lyons, 2<sup>nd</sup> by Ralph Looney, motion carried
- Rattlesnake flyer: advised to add information about snake bites to stock
- electronic newsletter: will experiment to see how well it works
- need ideas for new classes at Rendezvous 2011

*Continued at top of Page 5*

# Draft State Board Meeting Minutes

DRAFT STATE BOARD MEETING MINUTES, *continued from Page 4*

- Leadership class at Rendezvous 2010 and 2011
- reformat of flyers: tri-fold or open 8-1/2 x 11
- from now on all educational documents will have a revision date included

Lisa Deas reported:

- Wilderness Rider page is now on the website
- Facebook account: 250 fans
- PayPal donation button is now on all pages of website
- plans to revamp the website
- client access with secure log in
- money from PayPal will go to the 501C3 account

## **Public Lands:**

Bruce DeMott reported on

- Coordination Process
- Fred Kelly's presentation
- Joe Holcomb, Washington, D.C.
- Forest Service - Region 5
- FFA (Future Farmers of America): have statewide packing contests
- all 18 forests need to be covered for the Trail Classification process
- Bruce created a brochure to solicit funds for the CCC's, money goes to the 501C3 account for that unit.

## **Public Service:** Carrie Johnen reported

- 2009 Volunteer Service Hours: \$2,6722,788.66
- 3 units did not report
- new sheet for Directors to gather information
  - electronic, user friendly, let her know if there is a problem

**Webpage:** information already reported by Lisa Deas

## **Newsletter:** CJ Hargreaves reported

- please send photos and articles on the activities of Rendezvous 2010
- deadline for next issue will be April 9<sup>th</sup>

## **Travel Site:** CJ Hargreaves reported

- site earning an average of \$6.00 per month
- announced members who have recently used the site
- new addition: ZamZuu is now on the travel site
  - allows us to shop on-line at over 700 stores
  - earn 1%-20% of the sales for BCHC
- use the travel site to book your reservations for the October State Board meeting

## **F. Old Business:**

- Wilderness Rider: sign-off
- Dan Horn explained the changes:
  - must complete requirements as listed
  - cannot sign yourself off
  - verification certification is to be used for the internal use of BCHC

## **G. New Business:**

1. Lynn Joiner explained the receipt of \$50,000 from lawsuit regarding Smokeless Tobacco. Money has to be spent in California for work on public lands/trails. \$25,000 was put in the 501C3 account, \$25,000 was put into the savings account.

2. Bylaw updates:

- Redwood Unit and Top of the State: cleaned up the language
- Ruth Gerson explained that trails are considered a facility

3. Volunteers for the Rendezvous Committee: will be the northern units

4. New fairgrounds for Rendezvous 2011:

- first weekend in April at Red Bluff, Tehama County Fairgrounds
- fairgrounds caters to equestrian groups

## **H. Announcements/Other Business:**

1. Grants: 501C3 - we do not have a policy right now,

- will have information by May 1<sup>st</sup>
- policy will need to be consistent, use of a rubric
- CPA said we need to develop this policy

2. Adopting cabins: information was presented (letter attached to Secretary's Minutes)

3. Bylaws change to BCHC regarding emailing the 45-day packets

- \*\*the 45-day notice can be sent as an email or regular postal mail
- motion made by Steve Rennebu. 2<sup>nd</sup> by Cheryl Wegner
- this will be the first reading, second reading will be at the October State meeting and a vote will be taken at that time.
- motion to accept by Nancy Kimmel, 2<sup>nd</sup> by Michael King. Motion carried.

4. Newsletter by email:

- volunteers to try it and see how it works
- could raise the dues to cover the newsletter
- add email address to the membership application

5. Membership application: clarify new or renew-just say membership

*Continued at top of Page 6*

# Draft Minutes

# BCHC

DRAFT STATE BOARD MEETING MINUTES, *continued from Page 5*

on the application to cover all bases and add a box to check new or renew membership

6. Wilderness Riders: will now be a commission under the 501C3 to help run the education process for Rendezvous.

7. State to sell items on-line: hats, mugs, bumper stickers

8. Forest Service Planning Meetings: April 6<sup>th</sup>, need people to attend in their areas

-afternoon meetings: 1-5pm - discussions

-evening meetings: 6:30-8:00pm- summary of the afternoon

-sites: Sacramento Convention Center, San Bernardino, Shasta

Trinity, Bishop

-go on-line to register

**I. Adjournment:** meeting was adjourned at 4:00pm

Respectfully submitted,

Kaye Bruns

BCHC Secretary

**RENDEZVOUS 2011 WILL BE HELD  
AT TEHAMA COUNTY FAIR-  
GROUNDS, RED BLUFF, APRIL 1-3,  
Theme: "Building Wilderness Skills"  
MARK YOUR CALENDARS!**



*Many thanks to those who have used the BCH Get-away travel site in recent months! BCHC is earning an average of \$6.00/month while you take your vacations.*

*Here are the members who donated to BCHC in this easy way since November 2009:*

*Kaye Bruns, Antelope Valley Unit*

*Nancy Kimmell, Los Padres Unit*

*Joan Lewis, Los Padres Unit*

*KarenHarper, Mid Valley Unit*

*Michael Murphy, North Bay Unit*

**The deadline for submissions for the  
Spring/Summer 2010 edition  
of The Backcountry News is:**

**FRIDAY, AUGUST 6, 2010**

**Send submissions to  
[news@bchcalifornia.org](mailto:news@bchcalifornia.org) OR  
[cjohargreaves@clearwire.net](mailto:cjohargreaves@clearwire.net)**

**or mail to**

**1229 Maple Hill Ct.  
Manteca, CA 95336**



**BCHC will have a booth at Bishop Mule Days Celebration again this year over Memorial Day, May 25-30, 2010. If you are interested in helping out, contact Lisa Deas, Co-VP of Education, at [muledaze@yahoo.com](mailto:muledaze@yahoo.com)**

.....



*Did you know BCHC is now on Facebook?  
Become a fan by going to the BCHC website and clicking on the  
Facebook logo.*



# Public Lands

## 2009 BUSY FOR CET&LC

To all members of California Equestrian Trails and Lands Coalition (CET&LC) and to all interested parties concerning horse issues in California:

I want to thank the members of CET&LC as well as non-members for their effort to fight to keep horse access alive in California.

2009 was a busy year for CET&LC. Dealing with many access issues again proved that the equine community is not going to sit back and watch other user groups take away the safety of equine and hiking trails. We will not allow their bogus science to keep equine and hikers off of our Public Lands.

Here is breakdown of the issues CET&LC addressed in 2009:

1) Member of CET&LC attended a meeting at Harris Ranch to listen and talk about equine issues with members of the California Horse Council.

2) CET&LC worked with members of BCHC in sending a letter (via Bruce DeMott) to the Forest Service Chief in Washington, D.C., which concerned the "Purity Doctrine" that, if enacted, could be devastating to equine use in our National Forests.

3) Sent a letter to Deb Ballet, CEO of Equine Land Conservation Resource (ELCR), expressing our position re equine access on trails in California.

4) Lynn Brown, ETI National Trails Chair and Southern California V.P of CET&LC, is now representing equine users on the L.A City Equine Advisory Committee. This newly formed and important committee is a direct voice for equestrian issues in speaking to L.A City Council.

5) Janet Peterson, Action Coalition for Equestrians (ACE) President and CET&LC Northern California V.P, continues to sit on a panel concerning the Folsom General Plan.

6) Connie Berto a member of CET&LC is working with the Marin Horse Council. They have been working through CET&LC to block unsafe entry by mountain bikes on historic equine/hiking trails in Marin County. Letters have been sent from CET&LC to the Recreation Board of Marin County. One of the areas of concern is "Bill's Trail". At this time there is a reprieve from mountain bikes on some historical equine trails.

7) Letters from CET&LC have been sent to the panel discussing the Emigrant Trail in the Lake Tahoe area.

8) Letters were sent from CET&LC to the Orange County Register on behalf of keeping the Great Park in Orange County open for equine use. As it now stands our Governor would prefer to sell the property.

9) CET&LC member (BCHC-Sequoia Unit) is now on a panel and committee discussing the future of the Giant Sequoia National Monument in the Sequoia National Forest area.

10) CET&LC has sent letters to various Forest Service agencies concerning the "Forest Management Plan" which potentially can be detrimental to access on our National Forests. BCHC is taking the lead on the challenge by the equine community.

11) CET&LC is work with Cuyamaca Campground issue. CEA (Cuyamaca Equestrian Association, a member of CET&LC) is protesting the removal of an equestrian campground without any valid scientific basis. CEA continues to offer great resistance to this unjustified and forceful removal of a campground that has been used for decades.

12) Ruth Gerson. BCHC Public Lands Co-Chair, is very busy fighting for safety on the Tapia Spur and working on the Ronald Reagan Horse Camp in the Santa Monica mountains.

13) Mary Benson is still busy with issues in LA County and is working with Lynn Brown on many committees concerning access for equestrians in LA County. Mary Benson has recently taken a position as supervisor of the Field Office of L.A. Councilman Paul Krekorian. Mary is very knowledge and will be helpful in supporting equestrian issues.

14) Ron Jenkins is working very hard to organize a new group in Southern California with the California Horsemen's Association, Inc

15) CET&LC has been working with the Coastside Horse Council in Half Moon Bay to keep access to a beach on a trail that has been in use for decades. So far the horses are allowed to remain on the trail.

16) CET&LC is still working with other stakeholder organizations on [www.CaliforniaTrails.org](http://www.CaliforniaTrails.org) concerning multiuse ideas and having safe trails in our State Park.

Thank you to everyone for such a positive year!

John Keyes  
Chairman, CET&LC



# Public Lands

## PUBLIC LANDS

*Bruce De Mott, Co-Vice President of Public Land, with Ruth Gerson*

Public Lands Co-Chair carries a lot of responsibilities and opportunities for me. I am very thankful for the attendance that the Unit Public Lands Chairs demonstrated by turning out during Jeannette's and my tour each weekend in January to present the Coordination process. The first stop was Hemet. The following three weekends were in Visalia, Manteca and then Redding. It was very revealing to me to see so many of the things BCHC and BCHA have been trying to say to agencies for years, in writing, in a county comprehensive document. Dennis Dailey of BCHA and I had been saying these things to each other for years and the document looked like a vehicle to express our concerns. It looked like a big yea!

When I was invited to participate with a county in the development of their document I bought in because so much of Dennis Dailey's and my concerns were written in. This was true because it had been taken from the BCHA website and Dennis' writing was quoted extensively. My contributions were seemingly significant but relatively minor. Also I was invited to participate in BCHA's development of a public lands training document for the 25 affiliates. We had regular conference calls with BCHA advisors and I offered the county document that I was involved with along with a process called Coordination. The document was forwarded to all the BCHA advisors. Next I was asked to package it into a training module for new Public Lands Chairs. Okay, but how? A couple of folks from Texas named Dan and Margaret made a presentation in early March and they brought along a primer. Now I began to see the answer as to how to develop the training module.

We struggled with the county document due to its complexity. The BCHC and BCHA position was very good, however the document's 80-page length caused difficulty. Wading through the document with five County Supervisors and even more Planning Commissioners from the lead entity proved confusing and controversial. The document was generating its own opposition.

The primer offered simplicity by a mere resolution of a tax-based entity to coordinate. A government agency qualifies as a tax-based entity. Once a resolution is adopted, a policy is developed. A policy statement can be one page or just one line. An example one liner is "All public lands, roads and trails will be kept open." Great! I could sell this.

Many, many hours were spent making arrangements to bring the leading advocate of the Coordination process, Fred Kelly Grant, to our 2010 Rendezvous. Also, many more hours were spent arranging visits to our Rendezvous by the Forest Service Recreation, Heritage and Volunteer Resources office in Washington, D.C., and US Forest Service Region 5 representatives.



*Fred Kelly Grant explains the Coordination process*

Fred Grant's presentation on Thursday, March 18, was videotaped for the presentation I was asked to make in April at the BCHA national meeting in Branson, Missouri. BCHA paid for the training DVD. Fred had forgotten of the existence of the simplified primer. At my urging, Fred contacted Dan and Margaret (mentioned above) and they shipped the primer from Texas to our Rendezvous in Merced in a day. Whew! Now a much-simplified version of Coordination could be presented at the Public Lands Committee meeting Thursday. The chairperson of a local County Planning Commission attended Fred Grant's presentation. He was very impressed and bought several copies of the primer. The Commissioner talked about presenting the Coordination process to his county Board of Supervisors, saying, "This is good stuff." Also attending Fred Grant's presentation was Tuolumne County Supervisor Teri Murrison. Teri is a strong advocate of the Coordination process.



*Teri Murrison, Tuolumne County Supervisor*

At the Friday, March 19, Public Lands Committee meeting Ken Graves and Jo Johnson spoke of the significance of involving and being involved with the California Conservation Corps (CCC's). Their presentation spoke of the importance of the CCC's in trail maintenance and getting our youth into the outdoors. Before anything started though, Dan Clifford snuck in a bouquet of flowers. We presented Ruth Gerson, my wonderful Public Lands Co-VP, with the bouquet and a card signed by many, many admirers. We wished the much-surprised Ruth a happy 75<sup>th</sup> birthday. She glowed radiantly.

Following Ken Graves and Jo Johnson, I presented a brochure I had developed to solicit funds for hiring the CCC's for trail maintenance. The brochure had been presented to the Executive Committee and is available upon request. Seeking public funds was a follow up to the commitment I made to the USFS Recreation, Heritage and Volunteer Resources office in Washington, D.C., regarding the necessity of public involvement. I was in total agreement with Director Joel Holtrop and of Jim Bedwell's statement, "Let's stop suing each other and put the money (USFS) into trail maintenance."

The Public Lands Committee held a short discussion on the necessity of developing a mission statement for Public Lands. Input was requested from the Unit Public Lands Liaisons. Some responses have been received. Follow up discussion ensued about the differences in a philosophy and a mission.

Ann Lange and Jerry Ledbetter made a two-hour presentation on the necessity of trail monitoring and offered training on how it is to be accomplished. Volunteers from BCHC Units are needed to perform this important work for the eighteen Forests in California.

*Continued at top of Page 9*



# Public Lands

**PUBLIC LANDS,,** *continued from Page 8*

Friday at the beginning of the State Board Meeting we had the pleasure of a brief presentation on how the Forest Service works from Art Jeffers of the USFS Recreation, Heritage and Volunteer Resources office in Washington, D.C. Marlene Finley of USFS Region 5 presented after Art. Anything relating to trail work, access and so on goes across Marlene's desk. Marlene hit all the talking points we had discussed. For example, what kind of employees USFS should be hiring due to the great influx of retirees; the "nature deficit disorder" of our youth caused by young people not getting outdoors;



*Art Jeffers bestows a "Happy Birthday" hug on Ruth Gerson*  
soliciting public funds, and being responsible to Jim Bedwell's statement of putting our money into trail work and not suing each other.

Many thanks to the USFS for their great showing!

Friday night at the annual awards dinner, Dan Clifford was presented the first perpetual Public Lands Award. Dan performed outstanding work and dug deep into his own pockets to bring important presenters to BCHC. Nothing was too big and Dan dug in again to attend a meeting with Jeannette and me with the USFS Chief Deputy and his staff in Washington, D.C. Dan was a well-deserving recipient of this new award.



*Marlene Finley,  
USFS, Region 5*

On Saturday Jeannette and I hosted a parade from downtown Merced into the Fairgrounds. Over forty horsemen participated. All merchants on Main Street were given 72-hour notice of street closure prior to the parade. A BCHC Rendezvous flyer was attached to the notice and also posted along Main Street in downtown Merced. My thanks to Richard Hodgson and Kathryn Reeves, Mid Valley Unit, for helping distribute and post the flyers.



*Anitra Kass, Southern CA Regional  
Representative, Pacific Crest Trail  
Association*

Thanks to all for your support of Public Lands and your attendance at our Rendezvous presentations. Let's keep up the momentum for perpetual access to OUR Public Lands!

I think learning the ability to use our local "small" government to fight "big" government was very exciting. It gave me hope for the goals that we have, and the struggles that we may face in the future. It was an amazing presentation. I wish everyone had attended, and I sincerely hope that BCHA will have him do a similar one for them.

~Elizabeth May, Sutter Buttes Unit

## BLM WANTS TO BAN OFF-TRAIL TRAVEL IN VAST AREA

*By Dennis Webb, from the Grand Junction Daily Sentinel, Tuesday, 3/2/2010*

Off-trail travel by motorized vehicles and bicycles would be prohibited on hundreds of thousands of acres south of Grand Junction under a proposed decision by the U.S. Bureau of Land Management.

The agency's Uncompahgre Field Office has released a plan eliminating what is referred to as an "open" travel management designation for 410,351 acres within the field office's jurisdiction. The affected area covers portions of Montrose, Delta, Gunnison, San Miguel, Mesa and Ouray counties. Much of the acreage is in the Nucla area, and other major affected areas are near Montrose, and midway between Montrose and Grand Junction.

Limiting vehicle travel to existing trails is intended to reduce impacts in response to a rise in sales of all-terrain vehicles, off-road motorcycles and four-wheel-drive vehicles in Colorado. It aims to prevent creation of unauthorized new trails, and also prohibits vehicle uses that would convert a single-track trail to a two-track route, or enlarge an ATV trail to a wider two-track route.

While federal agencies also have dictated in certain cases that trails are closed to vehicle use unless specifically marked as open, BLM spokeswoman Erin Curtis said that's not part of the BLM's Uncompahgre Field Office decision. Curtis said the BLM worked with a wide range of interests over the last 2 1/2 years, including motorized vehicle representatives, and all have supported the proposed travel management plan.

Said Delta resident Walt Blackburn, a member of the Thunder Mountain Wheelers ATV Club, "We support going from riding anywhere to (using only) designated trails. We don't have any problem with that."

He said concerns are more likely to arise when efforts are made to take trails away. The BLM accepted protests to its plan through March 26. No protests had been received as of the date this article was written.

## Education



### COLORADO MULE RIDERS

*Bill Balfrey - Past President, Top of the State Unit*

I was pleased to see the November 2009 Western Mule Magazine arrive in my mailbox last fall. The cover photo immediately intrigued me as it displayed the Colorado Mule Riders, an all male (mule) riders club for high elevation riding. I think that I read somewhere a member of the club must pass on before a new member is allowed to sign up - an elite group of good 'ol boys.

The cover photograph was quite impressive with snow on the ground and some twenty riders displayed. Covers like this one intrigue me for several reasons. First, it is a beautiful picture. Most viewers stop with that. I found myself evaluating the mules and studying their tack. I assumed cost was not an issue for this group. I next studied their clothing as to type, amount they take, and how they carry it on their mules. I looked for what else they might carry. Many had saddle bags but few displayed horn bags. I evaluated each rider's chance of surviving the unexpected night out. There was a wrangler to lead the riders but I can't recall ever seeing a picture of a pack mule on their rides. I could see from this cover photo that almost all of the riders had a slicker tied behind their saddles or were wearing a slicker. One thing that immediately caught my eye was the display of blue denim jeans showing below the chaps. I must quickly say that many of the riders may have been wearing Gore-tex lined jeans.\* If so they can display all the jeans they want. I know fellows that used to ski all day in those jeans and they stayed warm and dry. But, if not Gore-tex, I hear the words that I oft

repeated in my Winter Survival classes: "Wet cuffs at 8:00 a.m., wet knees at noon and wet thighs at night". I would tell the class that winter clothing needs to be hydrotropic—cotton jeans wick water, they don't repel it." Cotton is fast to freeze, too. It's hard to beat good old-fashioned wool. Another experienced mule rider pointed out the danger of riding with a hood pulled up to where a limb might hook it (like the rider third from the end). If the limb hooks the hood and the mule keeps going, it will choke the rider. I used to require my cross-country ski class students to tuck-in scarves for the same reason.

With this in mind, when you are riding in cold weather, may your trail ride be as pleasant at the end as it was in the beginning!

*\* I looked up the Gore-tex jeans in Cabela's catalog and see that they have gone to Dry Plus and the jeans are called "Roughneck Fleece-lined Dry Plus", number JK 98 021, selling for \$59.95. Check*

*Permission was granted to use the Western Mule Magazine cover.*



### "MOVE OVER LAW"

#### Public Safety Campaign Reminds Motorists to Move Over & Slow Down

Drivers are required to move over and slow down when approaching a roadside emergency along a state highway or freeway. The law is designed to reduce the deaths of police officers, tow truck drivers, paramedics, and other emergency personnel who are aiding stranded or injured motorists. Use caution if lane changes are required.

According to a person recently ticketed for this offense, the penalty is a \$754 ticket, three points on your license and a mandatory court appearance.

This is not a new law. (It was originally enacted in California in 2007.) For more information see California Department of Motor Vehicles, Vehicle Code, Division 11, Chapter 14, Section 21809.

*Thanks to Mary Odell, SJSU, for submitting this information.*



# Education



## BCHC AT EQUINE AFFAIRE

*By Carol Chodakauskas, Santa Ana River Unit*

Even through the worst rains in recent memory, and Super Bowl Sunday, the BCHC again this year set up a very successful display for thousands of visitors to Equine Affaire in Pomona, California. Through the hard work of Linda and Chip Herzig, several units came together to set up this great display. This year we were able to have a much larger area and could demonstrate several aspects of BCHC.

We set up a small Gentle Use camp that could be packed on one mule for two people for several days. We set up a high-line display showing several different methods of tying your horses from knot eliminators to prussic hitches. This generated a great deal of interest from horse people who have never camped with their horses but would really like to have that experience.

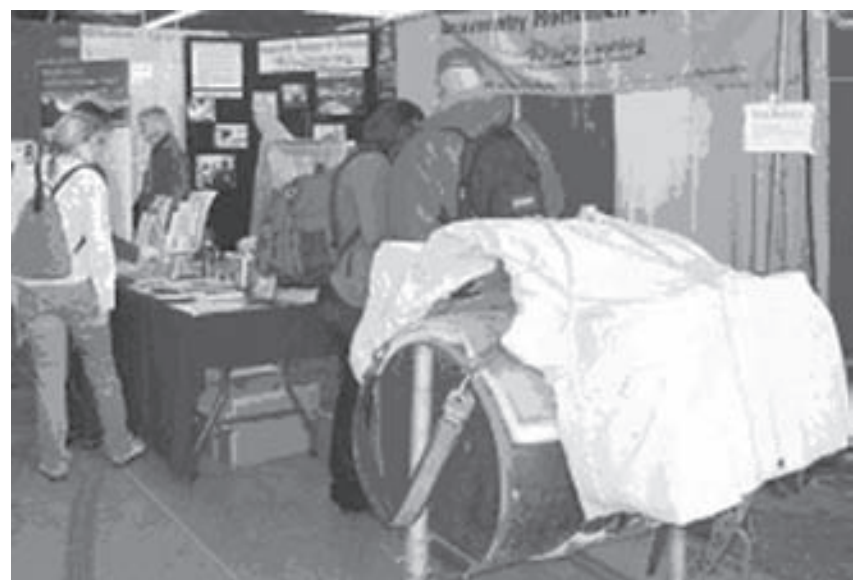
We had a table full of information from many California pack outfits and from Bishop Mule Days. The packers were all very eager and thankful to us for getting their information out to the public. We had another table loaded with the many flyers available on the BCHC website about camping with horses in the back country (Linda made many trips to a copy machine to keep the flyers available). These flyers were very popular with the trail riders who passed by our booth. The Pacific Crest Trail Association also set up a display with information and explained how the BCHC helped them to maintain the PCT. In addition to all of this we also had an “iron mule” and were able to demonstrate different hitches and how to load items for packing.

San Gorgonio, Santa Ana River, San Diego and Antelope Valley Units all participated to make this event a success. We were fortunate to have our booth next to several important horse and mule people who are great supporters of BCH. Tom Seay of “America by Horseback” on RFD-TV was a great fan and at each of his speaking sessions he

recommended BCHC as the best horse group to join. This sent a flood of people to our booth! Tom also commended us on the trail work that we do. Steve Edwards, who also appears on RFD-TV, sent people to our booth to learn how to use the pack saddles he sells. Bonnie Davis, a long-time BCHC supporter, and her Two Horse Enterprises sent people over who were interested in camping with horses and concerned about keeping trails open. In return we sent people to Bonnie and Tom’s booths for information on trails, pack equipment, and books on trails and packing. All in all it was a very informative and fun time.

Thanks to Linda and Chip Herzig for keeping us all organized and having everything you could think of in their horse trailer. Thanks to Troy Patton for his iron mule, packing gear, the great highline he made, and for demonstrating how to tie a diamond and box hitch at least a thousand times. The highline was a big crowd attractor! Thanks to Kaye Bruns and her sister Chris from Antelope Valley for spending the four days with us and talking to everyone about joining BCHC. To Cheryl Wegner, Jill Stokes and Allie Heary from San Diego: thanks for braving the rainy weather and bringing great information about San Diego trails. Dana Cory, Buffy Swetland, Mandy Picozzi, Pete Kriger, Gregg Palmer and Kimber Cadenhead from San Gorgonio: thanks for all of your assistance in the booth so we could get out and “shop ‘til we dropped”. Also, a big thank you to Carol and Thad, Dave and Roland from Santa Ana River for helping take down the booth (Thad, sorry about the bump on the head).

We had several people who joined BCHC on the spot and we gave out many membership applications. We hope even more horse people will join and will show up for Rendezvous. At this venue in Pomona we were able to talk to hundreds of people about BCHC and what we do. We were able to listen to their stories and find out about concerns they have about trails up and down the state. We all left feeling that this was a very positive way to get out the word that BCHC **IS the best horse group there is!**





## Education

### 2010 EQUINE AFFAIRE WAS WET BUT WONDERFUL!

*Karin E. Brennan, Marketing  
Coordinator, Equine Affaire, Inc.*

#### Press Release: London, OH, February 11, 2010 —

Crowds of avid horse enthusiasts from throughout the Southwest and beyond ignored wet weather to travel to Fairplex in Pomona, CA, for the 2010 Equine Affaire—an event that brings horsepeople from all walks of equestrian life and all corners of the equine industry together to celebrate their passion for horses. The 10th annual Equine Affaire in California was held February 4th through the 7th, and the enthusiasm of area horsepeople for the show was dampened neither by the nation's ongoing economic challenges nor heavy showers that plagued the event on Friday and Saturday.

Equine Affaire's legendary educational program featured a power-packed lineup of clinicians and industry professionals and was complemented by a trade show that showcased a vast collection of high-quality horse-related vendors and products and offered endless shopping opportunities. Young horse enthusiasts enjoyed activities developed specifically for them at the Youth Pavilion, the Breed Pavilion provided the opportunity to meet representatives of dozens of breeds from around the world, and a new Trail Riding Pavilion featured a demo ring and exhibits catered to the interests and needs of trail riding enthusiasts. Horse lovers packed the Fairplex covered arena on Thursday, Friday, and Saturday nights to catch all of the excitement of Craig

Cameron's Extreme Cowboy Race.

**Education . . . the Mission of Each Equine Affaire.** The cornerstone of each Equine Affaire is its educational program, and the program offered at this year's event was exceptional to say the least. Attendees enjoyed a smorgasbord of more than 150 different clinics, seminars, and demonstrations presented in five different venues throughout the weekend. The cast of presenters featured at the show included accomplished horsemen from throughout the nation presenting clinics on general horse training topics as well as discipline-specific subjects. Among the general trainers featured at the show, there were several "new" faces including those of Tommy Garland, Ken McNabb, and Richard Winters who made debut appearances at the event and were extraordinarily popular with event attendees. Craig Cameron was back by popular demand and presented sessions of topics as diverse as progression of bits and knot tying. While many common themes could be found in the approaches of the "general" horse trainers, each clinician offered a unique "spin" to inspire and teach his training philosophies and techniques.

The English disciplines were well-represented at Equine Affaire by Nick Karazissis, Jan Ebeling, and Hardy Zantke—who conducted hunter/jumper, dressage, and driving clinics. Attendees also appreciated Daniel Stewart's enthusiastic presentations on

mentally preparing for competition both on the flat and over fences. The western sports of reining, cutting, barrel racing, and western pleasure were represented by prominent figures in those fields including Stacy Westfall, Barbra Schulte, Sharon Camarillo, and Mark Shaffer. Larry Whitesell presented sessions on easy gaited horses, while Matt Sheridan and Scot Hansen shared valuable information on training horses for trail riding and trail competition. Most presenters had booths in the trade show where they marketed their products and met with

horsepeople throughout the weekend to offer one-on-one advice. In addition to clinics which took place in the two main arenas at Fairplex, a star-studded line-up of industry experts also conducted demonstrations and seminars throughout the four days of the show.

**A Trade Show that was a Show in Itself.** Horse enthusiasts who were looking for great deals, quality products, and the convenience of one-stop shopping amid a vast array of equine product retailers were not disappointed. Equine Affaire's impressive trade show boasted more than 300 vendors with exhibits ranging from 10' x 10' booths to large stores featuring everything from artwork, jewelry, and gifts to fencing, barns, apparel, tack, and feed. Equine Affaire's indoor and outdoor trailer exhibits made it the place to compare most major brands side by side. Traffic in the trade show buildings was

"shoulder to shoulder", and shopping was brisk. Many vendors happily reported that they were "running out of merchandise" on Friday and Saturday, that the 2010 event was "their best event yet," and that the 2010 Equine Affaire was the "best event they had ever attended in California."

**A World of Breeds.** As in past years, Equine Affaire's Breed Pavilion was among the most popular—and congested—area of the event. Throughout the four days of the show, quality horses representing more than 20 breeds and registries ranging from Andalusians and Appaloosas to Paso Finos and Norwegian Fjords were showcased in breed demonstrations in the main arenas and in association and registry displays located in the Breed Pavilion. Among the equine "celebrities" on hand were two well-known Thoroughbreds—Fighting Ferrari (who played Seabiscuit in the movie) and Lukas (who is dubbed "the World's Smartest Horse.") Attendees mingled with representatives of horse breeds originating in North and South America, Europe, and beyond and also had the opportunity to research stallion services, horses for sale, and training facilities. Equine Affaire is grateful to the many breed associations and their members who participated in the event and brought such wonderful horses for everyone to appreciate.

**A Special Place for Horsey Kids.** The "next generation" of horsemen enjoyed exhibits and plenty of fun activities designed specifically for young equestrians

*Continued on Page 11*



# Education

**EQUINE AFFAIRE**, *continued from Page 10*

at Equine Affaire's Youth Pavilion. Numerous youth-oriented organizations exhibited within the Youth Pavilion where young equestrians participated in an educational trivia quest and were given the opportunity to paint their own model horses courtesy of Stone Horses®. The youngest event attendees received free temporary tattoos and made their own stick horses to compete in the Stick Horse Rodeo sponsored by Wahl Clipper Corporation.

**New Champion Crowned in Craig Cameron's Extreme Cowboy Race.** Equine Affaire attendees packed the covered arena at Fairplex to experience the excitement of, and cheer on their favorite contestants in the 2010 Extreme Cowboy Race. Thirty-three pre-selected horse and rider teams competed in qualifying rounds on Thursday and Friday nights, and 11 "finalists" advanced to the competition finals on Saturday night in pursuit of \$4,250 in cash and other prizes and the title of 2010 Versatile Horse & Rider Competition Champion. This year's race course was fairly technical and required strategy as well as horsemanship, and the race was one of the "smoothest" to date. The event was also characterized by notable camaraderie among the contestants. Congratulations go to the new 2010 Extreme Cowboy Race Champion, Robin Bond, from Vista, CA, who rode her Quarter Horse, *Jose's Perfection*, to first place. Robin received \$2000 and a beautiful western saddle courtesy of The Horse Connection. Rick Hoffman of

Hemet, CA, earned second place honors and \$1500 in prize money riding his Quarter Horse, *Leroy*. Sally Addington from Polk, PA, rode her talented grade horse, *Ghost of a Chance*, to third place and received \$750. Equine Affaire extends special thanks to Ken McNabb and Richard Winters—who served as the very capable judges for the competition.

**And the Equine Affaire Raffle Winners Were . . .** Thousands of entries in the 2010 Equine Affaire Raffle were received via the online form prior to the event and through computer forms at the event, and the winners' names were drawn on Sunday afternoon. Congratulations go to Joyce Purcell of Pinon Hills, CA, who won an original equine painting titled "California Dreaming" by Stephanie Come-Ryker of Leafline Studio; Gabriel Acosta of Los Angeles who won a portable corral provided by Travel N Corrals; Sarah Adams of Nuevo, CA, who won the horse & rider travel package from Valley Vet Supply; Susan Barreras of Riverside, CA, who won the equine gear package provided by JT International Dist., Inc.; and Michelle Aston of Boulder City, NV, who won the equine protective apparel from Jake's Flypants.

**Hats Off to Our Sponsors Who Made it All Possible.** The first-class educational and entertainment opportunities enjoyed by thousands of horse enthusiasts at the 2010 Equine Affaire in Pomona, CA, were made possible through generous sponsorship support by numerous equine product retailers and manufacturers. Equine Affaire, Inc.

would like to thank the nearly 20 companies which sponsored this year's event including, but not limited to: Pfizer Animal Health (sponsor of the Pfizer Arena), *California Horsetrader* (official publication of Equine Affaire); Carson Trailer (official trailer of Equine Affaire); Farnam (sponsor of the courtesy shopping bag); FCP, Inc. (official barn of Equine Affaire); North West Rubber Mats Ltd. (official stall mat of Equine Affaire); the United States Equestrian Federation (official sports governing body of Equine Affaire); All American Trailers, Inc. (sponsor of the attendee shuttle); and Equine Insurance (sponsor of presentations by Craig Cameron). Sponsorship funds make it possible for Equine Affaire to retain high-caliber clinicians and performers and present the foremost horse-related educational programs and equestrian entertainment in the nation while keeping ticket prices affordable for all horsepeople.

**Kudos to Our Hard-working Volunteers!** Volunteers once again played an important role in ensuring the success of Equine Affaire. This year more than 110 horsepeople assisted with the production including a large number of representatives of Cal Poly Pomona. Volunteers helped Equine Affaire staff set up and tear down event and clinic equipment, distributed free programs at the gates, worked at the Information and Affaire Wear booth, and helped with countless other tasks during the event. The management of Equine Affaire is truly grateful to all of the volunteers who devoted their time and talents to making the event a success. We couldn't do

the show without the help of so many dedicated and capable horsepeople.

**Future Equine Affaires in 2010.** Horse enthusiasts from across the country are already marking their calendars for Equine Affaires scheduled later this year. The Midwest Equine Affaire will take place April 8–11 at the Ohio Expo Center in Columbus, and the East Coast event is scheduled for November 11–14 at the Eastern States Exposition in W. Springfield, MA. For more information on all Equine Affaires, visit [www.equineaffaire.com](http://www.equineaffaire.com) or call (740) 845-0085 weekdays from 9:00am to 5:00pm Eastern.

**The BCHC Education Fund is a 501c3 non-profit organization.**

**A DONATION in the amount of your choice is tax deductible.**

**You can now donate easily and quickly, using a major credit card or PayPal.**

**Simply go to the BCHC website ([bchcalifornia.org](http://bchcalifornia.org)), scroll down to the bottom of the Home Page, press the Donate button and help us in our many efforts.**



# Education

## LOSTNESS

By Bill Balfrey, Past President, Top of the State Unit

Bill taught Psychology at The College of the Siskiyous for thirty-six years. He also taught Skiing, Winter Survival, Tracking, and a class called “Lostness is Preventable”. Bill is a member of Search and Rescue, an avid reader, and an excellent book reviewer.

I write this for the Backcountry Horsemen fully realizing that they don’t often become lost but the material will help us understand those that do become lost. Fortunately, our saddle horse and saddle mule often know where camp is located.

I wish to offer two books for review. The first book, Deep Survival, Who Lives, Who Dies & Why, by Laurence Gonzales (Norton Books, 2003), and the second, Lost in the Wild by Cary J. Griffith (Borealis Books, 2006). It is my recommendation the books be read in that order. When reviewing survival situations most all of us have thought the words, “What the hell were they thinking?” Well, Gonzales offers answers based in science, accompanied by well thought out examples and personal examples and he holds the credentials to do so. You’ll learn some brain anatomy and read about how the amygdala working with the hippocampus comes into play. He introduces (page 38) what role stress plays in viewing the answers of why someone makes the wrong decision. Don’t let me turn you off because answers to our own behavior will start popping up. One opening example is, as you join him standing on an 8’x 8’ platform with the LSO (Landing Signal Officer) of an aircraft carrier, at night, with an F-18 bearing down at you, fixing to land at full power. The LSO with the “pickle switch” in his hand is talking to the pilot a quarter mile out. The pilot is coming in 3 feet too low, the LSO hits the pickle switch, glaring red lights come on which mean, “You are not clear to land” and the LSO is yelling in his ear but red lights and yelling don’t get through—the pilot, at full power, attempts to land but hits the rear of the ship cutting the plane in two. We ask why and answers follow. For example, under extreme stress, one can develop “tunnel vision” where their vision becomes narrowed to one specific point—in this case the flight deck. Gonzales states, “...he very well might not have seen the lights or even heard the LSO’s voice...” as he centered on reaching the safety of the deck.

Several chapters later the author introduces the concept that the amygdala stimulates a “plan”. An example can be when we need to go from point “A” to point “B” we unconsciously form a “plan” reflecting routes, a mental image of what point “B” will look like, etc. While on that route something changes but the first plan still remains in our brain and we now bend that plan as we attempt to fit the changes in while the

original plan is still influencing our reasoning. For example, you had planned to use, say 8 hours for an event but lose two hours. Then you decide that the event is still a “go”, overlooking the fact that you have only six hours left. You’ve bent the plan and you may find yourself in the dark.

Chapter nine opens with a wilderness hike and we meet the hikers Killip and York. They are backpacking to Rock Lake, a place York has been to previously. York is younger and in better shape than Killip. They are at more than 12,000-foot elevation. They hike into the Gorge Lakes drainage. They have two miles to go to reach Rock Lake. It is a densely wooded wilderness. We are told that York becomes impatient and he leaves Killip to fend for himself. A thunderstorm develops and Killip holds up. He bumps into two hikers that report they saw York ahead. Killip, having no idea where York is located, “...pressed on, in a driving rain, intent on salvaging the trip.” The author points out, “There is a tendency to hurry to find the right place. Maybe it’s just over that little ridge.” “Without images, we are lost”. Killip does not hold a real image of Rock Lake. Killip, being “kind of lost”, enters a “...parallel drainage about a mile to the north” of the correct drainage. He is lost. He immediately knew that something was wrong. This was not the right place but he does not listen to that little voice. “The river and the little lakes and the rock shelf that York had told him he would see weren’t there.” “The image and the world didn’t match” (p153). Gonzales tells us, “He could have back tracked at this point”. Remember, we just learned, “There is a tendency to hurry to find the right place. Maybe it’s just over that little ridge”. And Killip heads into the wrong drainage. We think to ourselves, “How could he?” but to the organism it makes sense...hurry up and try to get some place that matches one’s mental map...a place that provides access to the essentials for survival” (p.158).

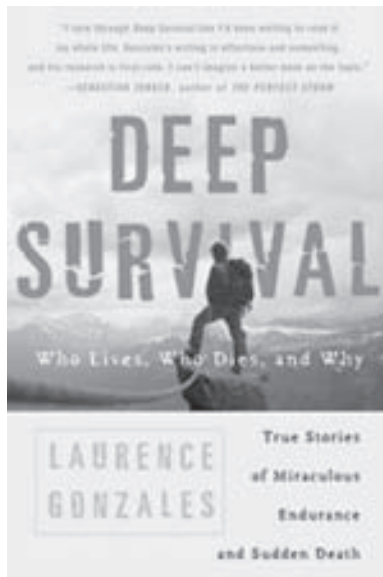
Chapter nine is entitled, “Bending the Map”, which is a new term for me. Bending the map is when the slightly confused person attempts to make the map he holds fit while facing the area he’s about to enter and he says, “Gee, it almost fits, it’s so close, let’s hike off and see if it matches better in a ¼ mile.” Soon the hiker becomes really lost. Gonzales, states, “Being lost is not a location; it is a transformation.”

Part Two of the book is entitled: SURVIVAL. On page 166, the author offers, as research reflects, “five general stages a person goes through when lost...”. As I read the pages, I want to review page after page for you but I really hope you buy the book. The appendix is worth the price of the book. Starting on page 281, Gonzales offers a list that survivors will want to read. The first suggestion offered before the list begins is “always take a back sight—the 180 degree view as you move ahead.”

Some of the suggestions he expands upon are:

- Avoid impulsive behavior; don’t hurry-
- Know your stuff-
- Get the information-
- Commune with the dead-
- Be humble- he writes, in the Navy Seals, “the Rambo types are the first to go“.
- When in doubt, bail out.

*Continued on page 15*





# Education

**LOSTNESS**, *continued from page 14*

Gonzales offers more and ends with a list of what survivors do.



And now the second book, Cary J. Griffith's *Lost in the Wild*. This book is a perfect fit to follow the Gonzales book. Griffith has chosen two accounts of wilderness users who become lost. His writing style is smooth and inviting and we want to read "just one more page". We meet Dan Stephen, a very competent and experienced Boy Scout leader. He is 22 years old and is leading a canoe trip in Ontario's Quetico Provincial Park. Dan entered the jungle-like thicket intending to walk for one minute then make a 180-degree turn to return back to the group while looking for the portage trail. He never returned. The second account is about Jason Rasmussen, a

third year medical student who is going on a few days' solo hike into the Boundary Waters Canoe Area Wilderness.

Two days into his hike, Jason steps away from his camp and makes trivial mistakes but, unlike the saying, "Who's counting", the mistakes add up—rather quickly, I might add. Jason soon finds himself separated from all his supplies and a snowstorm hits. He also realizes he does not know how to build an emergency shelter and it's getting dark. I hear you say, "Build a fire". Okay, but Jason has no matches.

Griffith's writing style allows the reader to see each step, each move that the lost parties make. When Rasmussen falls into one of many bogs, you fall into the bog with him. When Search and Rescue arrives on scene, you share in the search. No one expects Rasmussen to be alive. Air search keeps hoping to see smoke, not realizing neither party has matches. When the searchers get to within calling distance they ask the fellow for his name, surprised that Rasmussen is indeed still alive. Stephens finds his own way out. His survival skills have been more refined. And he starts eating bugs! Under his own power, he is able to climb into the helicopter.

I trust you'll enjoy both books.

Here's an important tip: Those who hike or ride horses into the wilderness will always benefit from carrying a small survival kit on their belt. Where you go, so goes your kit.



## SPEND THE SUMMER OUTDOORS ON UC DAVIS EXTENSION HORSEPACKING TRIPS

Davis, Calif.-UC Davis Extension announces two unique summer courses that take students into the California wilderness on horseback - Mustangs: A Living Legacy, and Mountain Horsemanship: Veterinary Care and Horsepacking in the Wilderness.

### Mustangs: A Living Legacy

Track wild horses and relive the Old West in the seldom visited Pizona area of the Inyo National Forest. From a central meadow camp, riders track mustangs in their natural pinyon forest habitat. Observe and photograph mustang herds and wildflowers. Learn the social behavior of the horses and their current struggle. Enjoy spectacular sunsets of the Sierra and White Mountains while a cook prepares dinner over an open fire. This program is a special opportunity that combines a superb outdoor adventure and a unique educational experience in exploring the biology, ecology and behavior of a proud and beautiful animal - the North American wild horse.

June 12-15: Sat. 7 a.m.-Tues. 3 p.m.

Benton, Calif.: Benton Hot Springs B&B, 55137 Hwy 120.

\$750. Includes horse, saddle, meals and instruction. Enroll in section 094OTH800.

### Mountain Horsemanship: Veterinary Care and Horsepacking in the Wilderness

This deluxe pack trip covers the essentials of horsepacking in the wilderness-with the Golden Trout Wilderness of the High Sierras as your laboratory. The instructor will discuss equipment, emergency veterinary care, feeding and managing livestock in the back country. Past participants have acclaimed it as an outstanding adventure.

Lone Pine, Calif.: Horseshoe Meadows Pack Station, Horseshoe Meadows Rd.

July 11-17: Sun. 7 a.m.- Sat. 5:30 p.m.

\$1,400. Includes horse, saddle, meals and instruction. Enroll in section 101OTH800.

For more information, please call (800) 752-0881, (530) 757-8899 from Davis or Woodland, email [extension@ucdavis.edu](mailto:extension@ucdavis.edu) or visit our website. <http://extension.ucdavis.edu/beyond>

UC Davis Extension, the continuing and professional education arm of UC Davis, is an internationally recognized leader in educational outreach for individuals, organizations, and communities. UCDE serves lifelong learners both locally and globally, with more than 60,000 annual enrollments in classroom and online university-level courses.

For more information, please visit our Web site at > [www.extension.ucdavis.edu](http://www.extension.ucdavis.edu)

If you have any questions, comments or concerns please contact us: [info@ucde.ucdavis.edu](mailto:info@ucde.ucdavis.edu)

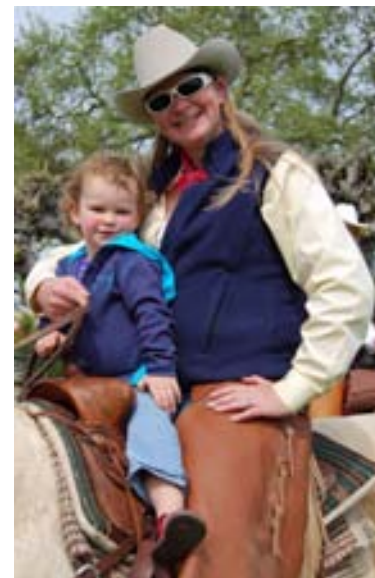
UC Davis Extension, 1333 Research Park Dr., Davis, CA 95618

1-800-752-0881

1-530-757-8777 from Davis and Woodland



# Parade & Opening Ceremony



Saturday's Parade from downtown Merced to the Fairgrounds was organized by Bruce and Jeannette DeMott, Mid Valley Unit. Entries included: Alameda County Sheriff's Posse, Sea Scouts color guard, California State Horsemen's Association, lively music by Turlock Fire & Police Pipe Band, various BCHC Units and individual riders, Bakersfield Stampede Rodeo Court, and children of all ages.



# Rendezvous 2010-BCHC Awards



**DAN CLIFFORD**  
San Diego Unit  
First recipient of the perpetual  
Public Lands Award

Given each year to the Backcountry Horsemen of California person who displays the dedication, hard work and the love of our public lands.

**Front Page:**  
**Nancy Kimmel and Dave Rigoli**  
**LOS PADRES UNIT**  
accept Individual and Unit Education  
Awards

Criteria for selecting the Individual recipient: Someone who has demonstrated unique, creative and innovative education programs, has used different methods or made a variety of presentations, and/or someone who has reached a variety of age groups.

Criteria for the Unit award: Promoting education through teamwork, participating in a variety of events, has members who have participated in State-sponsored programs, and/or has members who contribute articles for unit, state and/or education newsletters.



**BILL CHAIDES**  
Los Padres Unit  
Honored with the Ben York Trail-  
blazer Award

In his acceptance speech, Bill told us "...the easiest way to do Forest Service work is with the Forest Service." He encouraged all of us to "...go to your local District, get involved."



**BRADLEY MILES**  
Sequoia Unit  
WILDERNESS  
RIDER OF THE  
YEAR



**Nancy Kimmel**  
**LOS PADRES UNIT**  
accepts Volunteer Service  
Award

Presented to the unit(s) completing the most outstanding service record based on Volunteer Service Hours Repor. There is a cumulative award and a "per capita" award based on number of members in the unit.

North Bay Unit won the Per Capita Award, \$2000/member.



# Rendezvous 2010-BCHC Awards



## MAX AND IRENE COCHRAN JOURNALISM AWARD, 2009

*Photo by Kathy Zumbrunn*



1 <sup>st</sup> Place	James King	Mid Valley Monthly
2 <sup>nd</sup> Place	Mary Odell	San Joaquin Sierra Hoof Prints
3 <sup>rd</sup> Place	Erica Canevari	Redwood Unit
4 <sup>th</sup> Place	Rhonda Strickland	Redshank Riders
5 <sup>th</sup> Place	June Frisbey	Antelope Valley
6 <sup>th</sup> Place	Linda Tunnell	Los Padres

*Presented to the unit  
and its newsletter editor  
based on the quality of  
their newsletter:  
70% Content  
20% Appearance  
10% Consistency*

Kathy Zumbrunn and  
Michael King, Mid Valley  
Unit, proudly accept 1st  
Place perpetual trophy on  
behalf of James King, *Mid  
Valley Monthly* Editor



## 2009 Top Hands

*Photo by Kathy Zumbrunn*

Unit President's selection of the individual  
Who provided the greatest service to the  
President and his/her Unit.

Antelope Valley	June Frisbey
Eastern Sierra	Jim Cameron
High Country	Sharon Enderlin
High Sierra	Jim Harvey, Bill See
Kern River Valley	Cindy Horst
Kern Sierra	Joy McCain
Lake-Mendo	Dennis Jensen
Los Padres	Nancy Kimmell
Mid Valley	Dennis Serpa
Mother Lode	Melba Leal
North Bay	Nadine Lavell
Ohlone Riders	Bonnie Davis
Redshank Riders	Lawrence Peabody
Redwood	Rick Jennings
San Diego	Dan Clifford
San Geronio Pass	Jill Stokes
San Joaquin Sierra	John Mikkelsen
Santa Ana River	Al Shirley
Sequoia	Sandy Oates
Shasta Trinity	Sheila Geivet
Sierra Freepackers	Karen Whitehead
Sutter Buttes	Lou Langford
Top Of the State	Joe Croteau, Jennifer Bull

# Rendezvous 2010-Contests

## 2010 TABLE DECORATION CONTEST

All units decorating their tables at Saturday night dinner are automatically entered in this contest. Basic rules are that the Unit name must be clearly visible and entries over three feet tall are disqualified.

Most Humorous Shasta Trinity

Most Original Lake-Mendo

Best Represents BCHC Mother Lode

**BEST OVERALL\* REDWOOD**

\* = will be responsible for the Table Decoration Contest at Rendezvous 2011 in Red Bluff



Redwood Unit's award-winning "Pack to the Future" centerpiece



## ODD LOAD PACKING CONTEST

Joe Maxwell saddlebags won by  
Gary Santos and Greg Flowers, Mid Valley Unit



## LARGE RAFFLE

60' Round Pen - Brandy Conley  
Reds Meadow Pack Trip - Scott & Mary Odell

## GENTLE USE CAMP SET-UP

Mother Lode Unit

## TRAIL TRIAL CONTEST RESULTS

Trail Trials, held Saturday, were a test of horse and rider skill negotiating obstacles. Organized by Dave Ewbanks and Joan Wilkinson, using CSHA Trail Trial rules, there were 35 entrants in three classes: Juniors, Packers and Single Riders. Results were as follows:

### JUNIORS

1 <sup>st</sup> Place	Lexi Kiil (32 pts)	Sandcreek Saddlery Gloves
2 <sup>nd</sup> Place	Garrett White	Sandcreek Saddlery Gloves

### PACKERS

1 <sup>st</sup> Place	Garrett White (38 pts)	Buckle
2 <sup>nd</sup> Place	Beth Halford	Blanket

### SINGLE RIDERS

1 <sup>st</sup> Place	Holly Foiles (13 pts)	Buckle
2 <sup>nd</sup> Place	Richard Pannara	Tack Bag
3 <sup>rd</sup> Place	Kristin Defeyer	Horn Bag



# Rendezvous 2010-Contests

## WESTERN ART SHOW WINNERS

(Organized by the San  
Diego Unit)



### Photography:

**1st: Erica Canvari, Pack String in the Marble Mountains**  
2nd: Dan Clifford, Big Sky Montana  
3rd: Kathleen Griffin, Resting in the Quakies  
Honorable Mention: Dan Clifford, Justice's Eye  
Honorable Mention: Kathleen Griffin, Grandpa & Kids in Colorado

### Painting:

**1st: Let's Go!, Cheryl McDonald, Watercolor Colt**  
2nd: Dennis Jensen, Little Girl w/ Mule (donated to auction)  
3rd: Border Collie, Cheryl McDonald  
Honorable Mention: Joyce Jewett, Watercolor Stream

### Arts & Crafts:

**1st: Rudy Dezzani, Bridle Bit (donated to auction)**  
2nd: Victor Pedroza, Braided Rommel Reins  
3rd: JA Thomas, Horseshoe Magazine Rack

### Sewing:

**1st: Carole Polasek, Cross Stitch Horses**

### Leather:

**1st: Kelli Land, Knife Sheath**

### Carving:

**1st: Fredene Bradley, Soapstone Indian Head**  
2nd: Brad Miller, Soapstone Bear Family



### Jewelry:

**1st: Paula Fuhr, Pink & Black Sterling Wrap Necklace**

**BEST IN SHOW: Jerry Griffin, Horses in Snow Storm, photo**



## KIDS COLORING CONTEST

(Organized by Dennis Jensen, Lake-Mendo Unit)

### Age 2-6

**1st Place: CJ Compton**  
2nd Place: Kassidy Taylor  
3rd Place: Preston (didn't get last name)

### Age 7-9

**1st Place: Autumn Villarreal**  
2nd Place: Sasha Gattman  
3rd Place: Eliza Branch

### Age 10-17

**1st Place: Georgia Schnell**  
2nd Place: Alyx Lemos  
3rd Place: Jade Oates



*Shirts from Past Rendezvous*



*Wilderness Riders - Gentle Use*



# Rendezvous 2010 - Classes



*Paul Villanueva, Animal Footprints*



*Nancy Haydock, Stanislaus Wildlife Center*



*CHP, Trailer Safety*

*Sparkle Pony  
Parade Preparation*



***“PACK TO THE FUTURE -  
TODAY’S YOUTH,  
TOMORROW’S  
PACKER”***

**There were useful  
and interesting  
classes for all ages**

*Safety with Horses*





# Rendezvous 2010



*Ron  
Jefferson and  
the Tule River  
Band entertain  
during  
Wine &  
Cheese*



*Packing 101 for any age*



*Wine and Cheese*



*Tasty Dutch  
oven cooking*



*Variety of vendors; lots of wares*

# Unit News



## TOO MUDDY TO RIDE

*By Dan Horn, North Bay  
Unit Education  
Chairman/Webmaster*

With all the rains last winter, North Bay Unit decided we needed an indoor activity so one of our in-house medical

type people, Nadine Lavell, came up with a First Aid weekend. We had a two-day class starting on Saturday, January 30, with CPR and Basic First Aid.

Our instructor - Eric Peterson with Mill Creek Safety Instruction - started 22 students out with CPR dummies. We practiced mouth-to-mouth resuscitation and learned when to use chest pumping. Eric instructed us how to do CPR and mouth-to-mouth on babies. We couldn't get a volunteer for the proper use of a Defibrillator, so we went back to the dummies again. The four-hour class on Saturday ended with all 22 of us walking away with our current CPR and Basic First Aid cards.

On Sunday morning, 14 showed up for a Wilderness First Aid class. This was more hands-on learning - what to do when 911 is not just minutes away. We used a live body in an evacuation situation. After loading our victim in a litter, we simulated carrying her through the woods to a pickup to haul out. We worked on bandages, slings and the use of stitches and super glue to close a wound. We learned what to do about snakebites and bee stings and used splints to demobilize a "broken" bone for transporting.

We are planning a two-day First Responder Wilderness First Aid class this summer. The class will be held outdoors. We'll work on evacuation by horse and, possibly, helicopter. Having my riding buddy knowing what to do in an emergency makes a class like this all about ME!!



## Backcountry Horsemen North Bay Unit



## ANNUAL Spring Ride Rasche Ranch, Potter Valley

### May 14th thru 16th, 2010

- Reservation Deadline May 6, 2010
- Rain or Shine — No Refunds
- Ride Limited to First 150 Riders
- Cost per Person                      \$135.00  
16 and Under                      \$65.00  
Sat. Dinner & Dance & Sunday Breakfast \$55.00  
(BCHC membership not required)
- Families Welcome  
(Under 18 must be supervised by adult)
- RSVP – No On-site Registration

**Live Music Saturday Night  
Michael Paul Band**

#### Contact:

**Dan Horn**                      707-544-4543

**Email:** Bearstrap@msn.com

or

**Denise Gilseth**                      707-695-5319

**Email:** dgilseth@sbcglobal.net

#### **Auction Items** James Kelley 415-577-6666

The Auction will be back stage and results will be posted on a board. This will leave more time for dancing. Everyone will have to check their own tickets.

The guided ride will be about 4 hours with stopping for lunch. Free riding on the ranch is ok. Trails are rocky, shoes are advised.

#### Rules of the Ride

**Must be prepaid, there will be no on-site registration**

**Bring your own feed for stock**

**No fires at individual camps ~ No smoking on trail**

**Adult beverages cannot be served on trail**

**No Dogs ~ No Firearms ~ No Stallions**

**Every horse must have a rider**



## Unit News



### **3<sup>rd</sup> Annual Backcountry Horsemen Packing Clinic**

### **FEATURING PROFESSIONAL PACKER AND MULTIPLE MULE DAY FARRIER CHAMPION**

#### **LEE GREEN**

On May 15, 2010, Backcountry Horsemen of California: Santa Ana River Unit will be hosting the 3<sup>rd</sup> Annual Packing Clinic and Packing Trail Course as one of this year's group fundraisers. This special program is designed to educate the basic introduction of "packing" to the novice and intermediate "packer" as well. Participants will learn how to successfully pack equipment with an experienced packing mule or horse. They will receive solid techniques to help their horses eliminate fear and gain confidence while packing. The focus will be to educate "hands on methods" with iron mules, dummy mules and introducing packing equipment to the horse. All essential equipment will be provided. Men and women will learn techniques to experience the serenity and beauty of high country wilderness in California.

This year's featured trainer is none other than Lee Green. Mr. Green is a multiple Mule Days Farrier Champion and professional packer. Other notable instructors on hand will be Troy Patton and Chip Herzig.

The hosting facility will be Laramore Riding Arena located at 11380 Little Dipper Street, Mira Loma, CA 91752. The one-day clinic will start at 9:00am and run to 5:00 pm. The clinic organizers are allowing pre-entry to reserve clinic participation, space is limited and auditors are welcome.

For more information on this clinic and the Backcountry Horsemen, contact Thaddeus Chodakauskas, phone 951.312.0724 or Carol Chodakauskas, phone 951.733.2898 or visit [www.bchcsaru.org](http://www.bchcsaru.org). A copy of the entry form can be found at [www.bchcsaru.org](http://www.bchcsaru.org)

For more information on Lee Green visit [www.pacifichoofcare.org](http://www.pacifichoofcare.org)

### **GREAT EXPERIENCE FOR A FIRST TIME PACK TRIP**

*By Nancy Hamill, High Sierra Unit Membership Co-Chairman*

All you Backcountry Horsemen/women out there who haven't been able to experience the beautiful High Sierra, here is your perfect chance!

The High Sierra Unit of Backcountry Horsemen is gearing up for the summer season with a great opportunity to experience the "wonderful world of packing".

August 10 – 23 are the dates set for the Unit's annual Novice Pack Trip. For anyone interested in learning all of the aspects of organizing and going on a pack trip, here's your chance!! The High Sierra Novice Pack Trip is designed to help those who haven't experienced a backcountry trip as an introduction to packing. For those who have been a few times it is a great refresher course. Participants will attend a pre-trip meeting to learn what to take, how much to take and some of the basics of the "Leave No Trace" program. The trip itself is a definite hands-on experience where students will be paired with a more experienced packer to learn about packing your boxes, balancing loads and hitch tying.

Students will also get a chance to work with pack stock on the trail if they would like to. Once in camp leaders will have more tips and all will enjoy some really great camp cooking. The High Sierra Novice Pack Trip is a great experience with folks who have lots of knowledge to share. The trip will begin at Lewis Camp Trailhead above Springville and ride into a private camp at Trout Meadow in the Golden Trout Wilderness. The ride will take approximately 3 hours and is considered pretty easy.

Contact Nancy Hamill at 559-734-1223 or [nancy\\_randy@att.net](mailto:nancy_randy@att.net) (underscore between nancy & randy) for more information. Call now and don't miss this great opportunity!



*Use the BCHC travel site to make your next vacation plans or even to order gifts!*

*Simply go to*

***<http://www.ytbtravel.com/bchc>***

*to get started: Hotels, Airline Tickets, Rental Cars, Cruises, all types of wonderful vacations are at your fingertips!!*

# Unit News

## SAN JOAQUIN SIERRA UNIT GOES TO RENDEZVOUS 2010

By Mary Odell, SJSU Editor

The Rendezvous 2010 was held in Merced with activities for all ages and an emphasis on our youth. Our unit provided teachers, organizers, winners and participants this year. The weather was perfect, the grounds clean and green and the people excited and engaged.

Friday night started with yours truly winning 2nd Place for the **Max and Irene Cochran Journalism Award** for the 3rd year in a row...Our newsletter, I am proud to say, has placed in the top three every year since we started submitting it in 2004. We all work hard to have all the ingredients of a good newsletter. I want to thank all everyone who submitted articles and photos that make up our award winning newsletter.

**John Mikkelson** (right) was awarded his **Top Hand Award**-which I personally think could not have gone to a more deserving person.



Friday night was our time for the organizing the Social. I asked my friend and cowboy poet, **Kent Reeves** (left) to join us and open this event with a number of his poems. He has been invited four times to the Cowboy Poetry Gathering in Elko, Nevada and showed us why with his funny stories and poems. Our unit provided hot chocolate (some even had some peppermint schnapps in it) and s'mores. It was a lively group of singers, poets and story tellers all enjoying each others' company and the great camp fires.

Our board members had all their meetings to go to so very early in the morning and **Ted Fischer, Randy Witt** and **Jo Johnson** taught classes during the day. The Parade on Saturday included many horsemen and the **Turlock Police & Fire Pipe Band**. Throughout the day the Fog Valley Drifters played and on Saturday afternoon everyone who attended the Wine and Cheese Reception got to hear our own **Ron Jefferson** playing with the **Tule River Band**.

There were lots of classes for our younger members this year. I did not get

to any of them, but Sandy LaSpada said her 5-year-old daughter, **Abigail**, loved doing the activities with the mini horse and donkeys (left).



**Sandy LaSpada** (top right) came up for the day and competed in the Trail Trials on her recently rescued horse, Rosy. They both worked hard to do their best.

My husband and I enjoyed the clinics by Matt Sheridan and Jerry Tindell. We also attended the class on trailer safety given by the CHP which was informative and funny. I also took in the saddle fitting class given by Joe Maxwell...there were so many classes to go to and so little time!

Dinner on Saturday night was amazingly good. I had the prime rib that just melted in your mouth. Dinner and the lively auction were followed by lots of dancing to the music of **Shelly Streeter**. I haven't done that much dancing in quite awhile. The best part of that evening was **Scott and I** winning the raffle drawing for the **3 Day/2 Night Pack Trip from Red's Meadow**. We are looking forward to using it this summer.

A big THANKS to all that helped and came out. It was a fun, educational and entertaining time. RED BLUFF next year!



### PHOTO CREDITS

*A hearty "thank you" to all of the photographers who shared their wonderful pictures with me for this Rendezvous edition of The Backcountry News: Bruce DeMott, Cheryl Wegner, Kaye Bruns, Dan Horn, Mary Odell, Joe Croteau, Nancy Kimmel, Toni Villanueva, Michael King and Kathy Zumbrunn.  
My sincere thanks to all of you!!.*



## Unit News



### BEAUTY MOUNTAIN RIDE

*By Terry Jorgensen, San Diego Unit, Public Lands Liaison*

Saturday, April 3rd, the San Diego Unit was on the road again. With trailers hooked up and horses loaded we caravanned north to the town of Anza, California to meet up with members of the Redshank Unit. Several months before we had received an invitation from the new Redshank President, Bob Jones, to get together with our nearest neighbors to the north. Bob and Robin offered their ranch to gather for some sharing of ideas and, of course, a good dose of fun. This fun would include a nice ride through the newly designated Beauty Mountain Wilderness followed by a campfire and potluck dinner. Bob and Robin offered overnight camping on their ranch for those who wanted to travel earlier. Brian and Julie Murphy took advantage of that option. Then four of us - Terry and Marty Jorgensen, Patty Heyden and Cheryl Wegner - left in the wee hours of Saturday morning to be there in time.

After introductions all around and some great breakfast munchies we saddled up our ponies and off we went. We had a great ride through Beauty Mountain with lunch under the redshank trees and a nice water trough for our horses. A good time was had by all. The horses were great at the sometimes rough terrain and moved along on the open areas in an ever changing sequence.

The views were spectacular and the weather could not have been better. The warm sun and cool breeze made for a very comfortable time in the saddle.

On arriving back at the ranch and tending to our stock we gathered around the campfire and shared more stories and ideas of what our mission with Backcountry Horsemen meant to us and how we planned to accomplish that in the coming year. Pete Spencer and Terry Jorgensen, Public Lands Liaisons for their units, gave a summary of information obtained at Rendezvous and everyone got in on the discussion of various topics from how to interact with local agencies to how to get more kids into the backcountry or front country or any area for that matter.

While we did not solve all the issues that currently face us we had a great time, renewed old friendships and made some new ones. We had a great ride in some beautiful country and for the day really relaxed and had fun together.

Next on the list is to invite the Redshank Unit down to our part of the country and show them our area. We will be having a campout July 22-25 in the pine trees of Wooded Hill, Laguna Mountain, Cleveland National Forest and all are invited.

— — — — —

### START SAVING AND EARNING MONEY

#### ON YOUR EVERYDAY PURCHASES NOW!

**There's a new link on our BCH Getaway travel site!** It's ready to use. Just click and you can shop on-line from a HUGE selection of books, magazines, music, DVDs, videos, electronics, computers, software, apparel & accessories, shoes, jewelry, tools & hardware, housewares, furniture, sporting goods, beauty and personal care, broadband and dsl, gourmet food and just about anything else.

**SAVE TIME AND MONEY! Over 700 of your favorite stores are available on-line through the BCH Getaway travel site. Click, find the product you want, and earn cash back for BCHC on your purchases. Cash back ranges from 1% to 20%.**

**Discover "featured" stores and products. Any time you see these stores, you will FIND EXCEPTIONAL VALUES AND UNBELIEVABLE PRICES. Many offer a larger percentage of cash back (sometimes as high as 20%)!**

**With ZamZuu you can set reminders and NEVER FORGET ANOTHER ANNIVERSARY, BIRTHDAY, HOLIDAY OR OTHER IMPORTANT EVENT AGAIN! ZamZuu will send you an email notice in time to purchase a gift for the occasion.**

**SHOP FOR** Apparel & Accessories, Automotive, Beauty & Personal Care items, Books & Magazines, Cards, Flowers & Gifts, Children's & Infants' items, Coffee & Tea, Computers & Office, Cookies, Candy & Dessert, Electronics, Exercise & Fitness, Financial Services, Food, Footwear, Health, Nutrition & Weight Loss, Home Improvement and Do It Yourself items, Jewelry & Watches, Memorabilia & Collectibles, Movies, Music & Entertainment, Natural, Green & Organic, Party Supplies, Pet Supplies, Sports & Outdoors and Toys & Games

**EARN MONEY FOR BCHC WHILE YOU SHOP FOR WHAT YOU NEED! TRY ZAMZUU TODAY!**



# Unit News

## LAKE-MENDO RENDEZVOUS EXPERIENCE

### Pack to the Future

*By Toni Villanueva, Editor*

Members that were at the Rendezvous were Bill & Laurie K, Dennis Jensen, Robert S., Paul & Toni V. Eliza B, Don and Donna B, Gary P. & Nina C., Les L., Gayle K, Dave R, Carol M., Diana R., and Dennis P. What a great turn out!

The adventure started out on Thursday with a drive down to Merced. Paul, Eliza and I packed the horse trailer and off we went. Thursday was all about getting camp set up and greeting all of our Lake-Mendo members that arrived that day. There were Laurie and Bill K., Les L., Nina and Gary, Donna and Don and Jensen. Laurie and Bill were finishing up Thursday meetings when we arrived. Every one did their own dinners and then met at Nina, Gary, Bones and Donna's camp site for an evening full of laughs. Main topic was burning of the bras in the 60's (come on ladies you remember those days.) Our granddaughter was writing in her homework journal and just kept writing. We asked her is she's putting that information in her journal? I don't remember if she answered us.

Friday was a day of meetings for Paul, Robert, Jensen, and Bill & Laurie. The rest of us used our time to look at the vendors and just meet new people. Friday night's dinner was pleasant. The social after was enjoyable and exciting for our granddaughter, Eliza Branch.

Saturday was a morning meeting for Paul and then we were off to the vendors. Jensen had the Kids' Coloring Contest going outside as it was

such a beautiful day. Jensen you did a GREAT JOB! He also did the Kids' Costume Contest. Laurie and Bill were off to do their Gentle on the Trails (means no Trail Trials.) My granddaughter and I got to listen to a bit of that meeting. The unit was off to watch the parade. We had Don

B, Gary P., Les L. and Dennis P. enter for the Lake-Mendo Unit (TKS, guys). Next we sat and watched the Trail Trials. Gary P. went through first, then Les L. and Dennis P. took the end ride for us. It was a great day watching these guys put their animals through the test. At 4:00 Paul did his Animal Tracks event. He had a great turn out with some real good questions. (Paul do you know what a Dinosaur is now?) After that was finished we joined our Unit at the Wine and Cheese Reception. There were some great white and red wines (if you like red). The cheeses were out of this

world. We tasted some great goat cheese. Yes, goat cheese. Then back to the trailer to get dressed for Saturday night's dinner and dancing. Our table decorations were outstanding. We won MOST ORIGINAL. A great big thank you goes out to Carol, Diana and Gayle. They did a wonderful job! Jensen won Top Hand Award and received a 2<sup>nd</sup> place in the Western Art Contest for the State. Nice job, Jensen. The dinner was just fantastic and the dancing was as good as it gets. Don B. and Paul, thank you for the great LATE evening of dancing. I know the ladies of the night enjoyed it quite a lot.

Sunday was up and out to watch some packing and horse trialing event. As Paul, Eliza (granddaughter) and I were walking by the Dutch Oven Cook Off we observed Laurie and Bill, the judges. We sat and visited with some other members and waited for the cooks to let us know when we could eat their food. I will tell you this - that food was so good! Now it is time to get trailers re-loaded with the cooking gear and animals for the ride home.

We can all agree this was a wonderful weekend with family and friends.

Shhhh... Can you hear it? Listen carefully. It's in the whisper of the wind as it blows across the landscape... the crunch of the earth's soil beneath your horse's hoof... the far off hoot of a night owl welcoming dusk's moon. It is the call of wilderness.



*Eliza Branch, granddaughter of Toni and Paul Villanueva. The future of BCHC!*



## Unit News



### LOS PADRES UNIT PROVIDES UNIT SUPPORT FOR BOY SCOUTS OF AMERICA

*Submitted by Bill Chaides – Vice President, Los Padres Unit*

On March 24, 2010, at our regularly scheduled General and Board Meeting, Boy Scout Member “Mason Phelps”, of Troop 95, out of the Santa Maria area, provided a short presentation regarding his Eagle Scout Merit Project. He requested assistance from our unit to help him pack supplies into the Machesna Mountain Wilderness, Santa Lucia District of the Los Padres National Forest. His Eagle Scout project consisted of replacing the broken and vandalized wooden signs with metal posts and metal signs. The current signs in the area are so badly destroyed that all that remains to make one’s way are splintered posts and chunks of wooden signs with a letter or two visible. Replacing the signs with metal material will prevent their destruction by bears and other natural elements. Cementing the metal posts will also help the posts from being pushed over. These signs would greatly assist hikers and equestrians with directional guidance. Without signs providing direction to designated areas, travelers may get lost or disoriented. The project date of Friday, April 2, 2010, was set to meet at 9:00 a.m., at American Canyon Campground in the Machesna Mountain Wilderness. All material was to be gathered, prepared and brought in by Scout “Mason Phelps”. Mason provided our group a detailed tri-fold handout depicting his project.

Unit member and Volunteer Forest Ranger, “Ellie Livingston” volunteered to head up the packing committee to assist with this Eagle Scout project. Our unit, in conjunction with the USFS, Santa Lucia Ranger District partnership cooperation, assisted in completing this project.

On Friday, April 2, 2010, an accumulation of our unit’s packing stock volunteers, along with other single riders and hikers, gathered for support at the American Canyon Campground. Supplies were divided among the stock packers consisting of an assortment of construction material. Some items listed were:

Six – 7’ x 2 ½” diameter metal posts of about 25 lb each (150 lb)  
Six – ¼” steel signs, plasma cut, about 32 lb each (192 lb)  
Nine – 60 lb bags of cement (540 lb)  
Miscellaneous digging tools, shovels, post hole diggers, rock bars, camping gear, etc. (500 lb)

Total material came to about 1682 lb to be carried up a three (3) mile 7% plus grade to a designated meeting area at Nunez Reservoir.

After a lunch break everyone arrived at Nunez Reservoir and the supplies were redirected to four (4) other separate sites, each about 1 – 2 miles further up the mountain. Each hole was dug by hand in the rocky soil. Posts were set with cement and signs bolted into place and the extending thread hammered behind the nut to lock into place. A number of our unit’s packing group did not return to the staging area until 10:00 p.m., riding down the mountain in the dark.

Five (5) Scout members and a Los Padres USFS Ranger spent the night at the Nunez Reservoir spike camp. They were Rich Phelps, Troop Scout Leader and father of Mason Phelps, Mason Phelps, Eagle Scout Merit Project organizer, Stewart Adam, Ben Adam and Nathan Denlers, all of Troop 95, and Kathleen Phelps, mother of Mason Phelps and Santa Lucia District Ranger, Los Padres National Forest, USFS.



On Saturday, April 3, 2010, the Scouts re-evaluated their completed project before heading down the mountain to the staging area.

Our Backcountry Horsemen of California Los Padres Unit provided support with 22 project volunteers, consisting of 30 stock (14 riding stock and 16 packing stock). The pack trains were in tether of six, three, two and other singles.

A big congratulations to “Mason Phelps” for taking it upon himself to provide the needed replacement signs in the Los Padres National Forest!



## Unit News

### TOP OF THE STATE UNIT HOLDS TRAIL TRIAL TO CHALLENGE RIDERS, STOCK AND JUDGES

*By Joe Croteau – President, Top of the State Unit*

Have you ever tried to retrieve a jacket off a stump or barrel only to spend the next 5 minutes embarrassing yourself in front of your friends? Have you ever tried to drag a small tree with your horse, and then walk back to the trailhead on foot to retrieve your horse? How many of you have silently “judged” your best friend on a group ride while he trains his mule to cross that first deep water crossing for 45 minutes, wishing this had been taken care of back at the ranch last winter? How ‘bout backing out from a hornet’s nest on a trail where you just can’t turn around? These and other challenges were simulated at a “trail trial” event put on by our Education Committee last summer. The event was held at Deer Mountain, just north Mount Shasta. Approximately 25 TOS members, their friends, and their livestock signed up to be scored by judges on their ability to maneuver 12 stations.

The participants were asked to sign up as novice, intermediate, or advanced riders; each station was set up to provide the commensurate challenge. For example, a novice rider was asked to retrieve a jacket off a stump, the intermediate rider was asked to retrieve a jacket, then side up to another horse and hand it off to a friend. At another station, the novice rider needed to side pass along a log; the intermediate rider needed to side pass the log, side pass it back, and then side pass the attached perpendicular log without evacuating. Nobody was brave enough to sign up as “advanced” so I can’t report on that challenge (It’s amazing how honest folks are when they’re about to be judged in front of friends). Your animal’s ability is only half the score. The way you handle, coach, and reward your animal is the other half. If you end up in the dirt like I did, you must get up, smile, and act like you meant it!

Once everybody returned safely to the event center, a potluck/barbeque was held to nourish the body and ego. The poor judges got a million questions about scoring and technique but were also thanked for their coaching and honesty. The Trail Trial Committee handed out awards and raffled off donations. This event raised money for future TOS events, raised awareness for all riders on the little homework assignments they should take care of, and it helped recruit new members into the organization.

Several of our members participate in trail trials around northern California and southern Oregon because of their involvement with the California State Horesmen’s Association. They brought their experience and skills back to the TOS and it was a hit, so the plan is to conduct the event again in 2010.



Claudia Akkerman and Kim Brown waiting for their escort/judge to take ‘em through the course.

### TOP OF THE STATE TRAIL TRIAL CHALLENGES RIDERS, STOCK AND JUDGES



Jennifer Bull, Gary & Shirley Tickner, and Joe Croteau contemplate their scores. Pam Wells (top) searching for a beer, or anything after a rough day of field judging.

# Announcements

<b>WELCOME NEW MEMBERS!</b>			
Here are the names of those who joined BCHC from January through March 2010:			
<b>Antelope Valley</b>	Curtis, Dave R. and Karen Meridth, Clifford Rohling, Frank Tent, Barbara and Wayne M. Adcock	<b>Redshank Riders</b>	Blankfeld, Susan and Greg M. Bruce Ingham, Tony and Leslie Kiger, Mary Ann Landon, Holly and Stacy Kuhns Lewis, Michael D. and Pebbles Miller, Cary Rodriguez, Rita Uchimura, Susan Worrel, Carol
<b>Eastern Sierra</b>	Erlwein, Terry and Ted Hellyer, Beth and Caroline (mother) Waggoner, James B. and Judy L.		Bates, Danene Block, Marie E. Gomes, Tim Jackson, Peter D. Jones, Deborah Kramer, Jennifer and Terry L. Melvin, Grant D. and Trish A. Monaco, Robert Paul Petersen, Garrett and Erica Canevari
<b>High Sierra</b>	Engbrecht, Steve Flynt, Jim and Sue Smith Lauzon, Jon and Jennifer Jones-Williamson, Jarred S.	<b>Redwood</b>	Tobin, Kaye and Kary E. Schlick Amaral, Joan Burns, Janet Morgan, Glen H. and Jan Whitmore, Tasha L.
<b>Kern Sierra</b>	Curtis, Dave R. and Karen Geary-Kermode, Debi and Jeff Kermode Muller, Brook Rinker, Dave		Edwards, Steven W. and Susan K. Ingham, Tony and Leslie Kikkawa, Jiro and Brenda Krewson, David A. and Carol Kutsko
<b>Lake-Mendo Los Padres</b>	Ayala, Charles A. and Louise A. Harding Doty, Ben R. and Laura L. Harms, Brian Jones, Mike S. Obermeyer, Sandy R. and Bill Smith, Diana Tacket, Karen Traylor, Melissa and Mike Waltman, Caron J. and Ron E.	<b>San Diego</b>	Locke, Kelley Jo Osborne, Gene Reich, Gisela and Alyssa Wright, Janet and David C. Flores, Kathy C. and Rafael S. Bennett, Kathryn C. and John E. Gomes, Tim Hoy, Joseph and Linda Kinneavy, Kip C. and Marissa Pasquarello, Terri Rowe, Dan Scarberry, Ben Granger, Joyce Locke, Kelley Jo Thomas, J.A. Gomes, Tim Gillett, Sr., Michael W. and Tammy Potts, Lloyd and Kim Willock, Timothy L. and Rhonda L.
	Arroyo, Mike Decker, Doug and Donna Peterson Dockstader, Tamara and Dan Dorrepaal, Julie Estrada, Nicole and Daniel Graham, Candy Greggains, Dwain “Odie” Grover, Lester and Juanita Hodgson, Richard and Katherine Reeves Locke, Kelley Jo Merrihew, Melissa G. and Kenton Monk, Ellen and Roy Collins Pack, Ted and Linda Walzer Panarra, Richard Powell, Randy and Genell Prine, Dan W. Barnes, Carol A. Cook, Marci Fowler, Heidi Fox, Leslie Iverson, Lisa Marie and Jack Leach, Jeff	<b>San Gorgonio Pass</b>	
<b>Mid Valley</b>		<b>San Joaquin Sierra</b>	
		<b>Santa Ana River Sequoia Shasta Trinity</b>	
<b>North Bay</b>		<b>Sierra Freepackers</b>	
		<b>Sutter Buttes Top Of The State</b>	
<b>Redshank Riders</b>	Abbott, Bonnie and Michael W. Bolander		

**THANK YOU** to the following members who contributed extra to BCHC through their dues through March 31, 2010:

<b><u>BENEFACTOR (\$100):</u></b>	
<b>Antelope Valley</b>	Furer, Heidi and Latha Hylton
<b>Eastern Sierra</b>	Brown, III, John D. and Susie Harms-Brown Layne, Michelle
<b>High Sierra</b>	Allemang, Dan and Joyce Cochran, Richard and Dena Gerson, Ruth and Grant Keller, Dennis and Cathlyn A. Morehart, Marty
<b>Kern River Valley Kern Sierra</b>	Finch, Ken and Betty Caffee, Boyce ‘Buzz’ R. and Joann F. Filkins, DVM, Mylon and Pat Frick, Edith McGee, Jack Rogers, Scott and Grant Acquistapace, Robert E. Calef, Otis Cederlof, Robin Davis, John C. and Gail Devine, Eve, Sean, Sarah & Jacob Jenkins, Si and Karen Teixeira, Glenn and Karen
<b>Los Padres</b>	Barindelli, Karen Barnes, Jay and Elizabeth Butler, Don and Vicki Morales Caudill, Jon and Kathy Zumbrunn Davis, Dennise A. Doornenbal, Rien and Lieske Erlandson, Lloyd and Susan Hargreaves, Carol Jo and Larry Schneider Huffman, Jim Hurley, Karen C. Kraft, David and Kristine MID VALLEY UNIT - BCHC Paulsen, Janice D., Kelly & Lars Serpa, Dennis M. and Loretta
<b>Mid Valley</b>	Bourn, Ken and Gerry Altes, Matt and Ruth Estabrook, Lora and Carl J. Schlageter Mahoney, Alan and Carolyn McCombs, Rano and Bobetta
<b>Mother Lode North Bay</b>	

A BCHC Membership Application may be found on the last page. Detailed membership information is available on the BCHC website at:  
**www.bchcalifornia.org**

<b><u>PATRON (\$250):</u></b>	
<b>Antelope Valley Eastern Sierra High Sierra</b>	Colf, Stephen and Mary Ann Reginatto, Leon Barnes, Stan Kampen, Jeff and Alice Pendegraft, Karl and Trish Zaninovich, Vincent and Donna
<b>Kern Sierra Mid Valley Sequoia</b>	Arlington, Terri Holly, Jim and Pat Young, Larry

**MT. WHITNEY (\$500):**  
**(None at this time)**



# BCHC Units Around the State

## **BENEFACTOR (\$100), *continued*:**

<b>North Bay</b>	Bay Area Barns & Trails Trust (Barbara Weitz) Van Deren, Lesley Ann and Tim
<b>Ohlone Riders</b>	Pugh, Don Schoen, Sarah and David
<b>Redshank Riders</b>	Long, Gregory and Deborah Nicolaides, Michelle & Nicolaides Ent
<b>Redwood San Diego</b>	Renck, Ken and Allison Hawkins, Maris Gebhart, Al and Donna Jeffries, Jim and Cynthia Kirkwood, Walt J. and Suzie LaDow, Peter R. and Dede Salzman, Holly and Dan York, Ben
<b>San Gorgonio Pass</b>	Herzig, Paul and Linda Robertson, Ron and Korky
<b>San Joaquin Sierra</b>	Burroughs, Ernest Cunningham, John and Jenise Dalby, Kenneth and Diane Horst, Toby and Katie Yosemite Trls Pk Sta, Larry & Bridgitte Knapp
<b>Santa Ana River</b>	Golts, Debora and Chuck Mills Wolff, Pat
<b>Sequoia</b>	Airoza, Charles and Dahne Wilson, DVM, Jamie
<b>Sutter Buttes</b>	Baker, Randy and Gladys Layne, Corky Sherwood, Shirley

## ***Antelope Valley***

P.O. Box 3361  
Quartz Hill, CA 93586-0361  
Kaye Bruns  
(661) 944-4927  
kowgrl@juno.com

## ***Eastern Sierra***

c/o 293 Willow Street  
Bishop, CA 93514-2720  
Sarah C. Sheehan  
(760) 872-4039  
scsheehan1@gmail.com

## ***High Country***

P.O. Box 1047  
Alturas, CA 96101-1047  
Valerie Lantz  
(530) 233-5540  
mtn.horserider2@gmail.com

## ***High Sierra***

P.O. Box 4427  
Visalia, CA 93278-4427  
Art Jones  
(559) 338-1124  
horsesaddlecow@yahoo.com

## ***Kern River Valley***

P.O. Box 5  
Inyokern, CA 93527-0005  
Larry Cigainero  
(760) 379-5920

## ***Kern Sierra***

16347 Stephenie Rd  
Bakersfield, CA 93314-9669  
Lynn Joiner  
(661) 747-6347  
lynnjoiner@sbcglobal.net

## ***Lake-Mendo***

P.O. Box 191  
Potter Valley, CA 95469-0191  
Robert Sterling  
(707) 275-8742  
rwster52@yahoo.com

## ***Los Padres***

P.O. Box 6773  
Santa Maria, CA 93456-6773  
Dave Rigoli  
(805) 467-3031  
melindavoigt@aol.com

## ***Mid Valley***

P.O. Box 1709  
Modesto, CA 95353-1709  
Michael King  
(209) 664-0955  
mickngig@sbcglobal.net

## ***Mother Lode***

P.O. Box 2088  
Elk Grove, CA 95759-2088  
Becky Wolk  
(530) 622-1907  
rwbzbranch@localnet.com

## ***North Bay***

1055 W. College Ave. PMB 153  
Santa Rosa, CA 95401-5036  
Denise Gilseth  
(707) 695-5319  
dgilseth@sbcglobal.net

## ***Ohlone Riders***

PO Box 5262  
San Jose, CA 95150-5262  
Kathy Woods  
(408) 266-9828  
ksmithwoods@yahoo.com

## ***Redshank Riders***

P.O. Box 383  
Aguanga, CA 92536-0383  
Bob Jones  
(951) 445-3890  
drumbeat2000@gmail.com

## ***Redwood***

P.O. Box 6023  
Eureka, CA 95502-6023  
Carole Polasek  
(707) 786-9637  
muleride@frontiernet.net

## ***San Diego***

236 Oak St  
Ramona, CA 92065-1952  
Margaret Hill  
(760) 896-4123  
president@bchcsd.com

## ***San Gorgonio Pass***

P.O. Box 535  
Beaumont, CA 92223  
Paul "Chip" Herzig  
(951) 769-3781  
chryvchip@msn.com

## ***San Joaquin Sierra***

P.O. Box 25693  
Fresno, CA 93729-5693  
John Mikkelsen  
(559) 434-1174  
jessecowboy@comcast.net

## ***Santa Ana River***

PO Box 6871  
Norco, CA 92860-8062  
Thad Chodakauskas  
(951) 735-2746  
ctchod@aol.com

## ***Sequoia***

P.O. Box 456  
Springville, CA 93265-0579  
Jamie Wilson, DVM  
(559) 202-7216  
drjamie91@earthlink.net

## ***Shasta Trinity***

10855 Beaver Rd  
Oak Run, CA 96069-9602  
John Ellery  
(530) 365-0497  
johnellery@hughes.net

## ***Sierra Freepackers***

P.O. Box 64  
Oakhurst, CA 93644-0064  
Mike Esra  
(559) 325-0292  
mgebk@osbaccess.com

## ***Sutter Buttes***

4265 Markley Rd  
Yuba City, CA 95993-9659  
Ben DuBose  
(530) 673-1053  
dubosefarm@yahoo.com

## ***Top of the State***

P.O. Box 461  
Etna, CA 96027-0461  
Joe Croteau  
(530) 468-2339  
jjcroteau@sisqtel.net



<http://www.ytbtravel.com/bchc>

## **IMPORTANT NOTE**

Names, phone numbers & email addresses are for 2010 Unit Presidents as published in the BCHC Directory of State and Unit Officers, March 2010.

PLEASE CONTACT  
KAREN HARPER, BCHC  
MEMBERSHIP COORDI-  
NATOR, IMMEDIATELY  
TO REPORT UPDATES  
TO INFORMATION.

-----  
If there is no unit in your area and you are interested in starting one, contact BCHC Secretary Kaye Bruns for more information,  
(661) 944-4927  
or kowgrl@juno.com

A  
P  
P  
L  
I  
C  
A  
T  
I  
O  
N

- ☐ NEW MEMBERSHIP APPLICATION
- ☐ RENEWAL APPLICATION
- ☐ CHANGE - ( ) PARENT UNIT ( ) ADDRESS/PHONE/EMAIL ( ) MEMBERSHIP TYPE

Backcountry Horsemen of California



DCTR (YOUR MEMBERSHIP NUMBER) \_\_\_\_\_

\*\*NEW MEMBERS WILL BE ASSIGNED NUMBER BY MEMBERSHIP COORDINATOR

PARENT Unit Affiliation): (Select and CIRCLE ONE Unit as your Primary Unit Affiliation)

Antelope Valley	Mid Valley	San Joaquin Sierra
Eastern Sierra	Mother Lode	Santa Ana River
High Country	North Bay	Sequoia
High Sierra	Ohlone Riders	Shasta Trinity
Kern River Valley	Redshank Riders	Sierra Freepackers
Kern Sierra	Redwood	Sutter Buttes
Lake-Mendo	San Diego	Top of the State
Los Padres	San Gorgonio	

MAIL TO:  
BACKCOUNTRY HORSEMEN  
OF CALIFORNIA  
PO BOX 1610  
OAKDALE, CA 95361-1610  
<http://www.bchcalifornia.org>

Donate to BCHC  
Education Fund?  
Tax Deductible

Packer	\$10.00
Mule Skinner	\$25.00
You're the Greatest	\$50.00

MEMBER'S NAME –No Business Names; Please Print Clearly

SPOUSE/MEMBER'S NAME –MUST SHARE SAME ADDRESS

ADDRESS

CITY

STATE

ZIP

PHONE

EMAIL ADDRESS

TOTAL ENCLOSED: \$ \_\_\_\_\_

CHECK # \_\_\_\_\_

DATE SUBMITTED: \_\_\_\_\_

BUSINESS NAME –DONATIONS ONLY:

PARENT UNIT MEMBERSHIP TYPES: (CIRCLE ONE)

Individual \$40.00\* Family \$50.00\* Benefactor \$100.00 Patron \$250.00 Mt Whitney \$500.00

\*=BCHC shares portion of dues with Backcountry Horsemen of America

ASSOCIATE MEMBERSHIPS: AN ADDITIONAL \$15.00 PER UNIT IS ADDED TO YOUR PARENT UNIT DUES.

ASSOCIATE MEMBERSHIP UNIT AFFILIATIONS MAY NOT BE FOR THE SAME UNIT AS YOUR PARENT UNIT.

Associate Membership for: \_\_\_\_\_ \$15.00/unit (Unit Name (from above list))

Associate Membership for: \_\_\_\_\_ \$15.00/unit (Unit Name (from above list))

Please write additional choices on back

Please clip form along dashed line – KEEP BELOW INFORMATION FOR YOUR RECORDS

PARENT BCHC MEMBERSHIP TYPES

Individual, Family (Shared\*), Benefactor, Patron, and Mt Whitney. A Parent Membership is affiliated with a single Local Unit. BCHC members may NOT hold more than one active Parent Membership.

\*A SHARED Membership is for two adults with differing last names, each sharing a common address.

ASSOCIATE MEMBERSHIPS

These special Memberships are only available to persons already holding Parent BCHC Membership. No one may sign up for an Associate Membership without 1) having registered one of the Parent Membership types, and 2) having selected Parent Unit affiliation.

- You may sign-up for as many Associate Memberships as you like.
- Associate Memberships may also be initiated at any time during the term of your Parent Membership.
- Associate Memberships must expire concurrently with the Parent Membership, and are renewable only at the time of renewal of the Parent Membership.

Complete information regarding BCHC Membership is available on the MEMBERSHIP page at: <http://www.bchcalifornia.org>

KEEP FOR YOUR RECORDS

I SUBMITTED AN Application Form for:

<input type="checkbox"/> Individual Membership	\$ 40.00
<input type="checkbox"/> Family (Shared) Membership	\$ 50.00
<input type="checkbox"/> Benefactor Membership	\$100.00
<input type="checkbox"/> Patron Membership	\$250.00
<input type="checkbox"/> Mt Whitney Membership	\$500.00
<input type="checkbox"/> Donation – Packer	\$10.00
<input type="checkbox"/> Mule Skinner	\$25.00
<input type="checkbox"/> You're the Greatest!	\$50.00
<input type="checkbox"/> Associate Membership	\$ _____
Total Remittance	\$ _____
Check Number	_____
Date Mailed	_____

Questions: Contact [membership@bchcalifornia.org](mailto:membership@bchcalifornia.org)