

INSIDE THIS ISSUE

Fall State Board Meeting Schedule
2012 Mule Days - 2013 Rendezvous
Remembering Irene Cochran
2 BCHA Positions Filled
BCHA & BHC Public Lands & Unit News

For more BHC information, see our website:
bhcalifornia.org

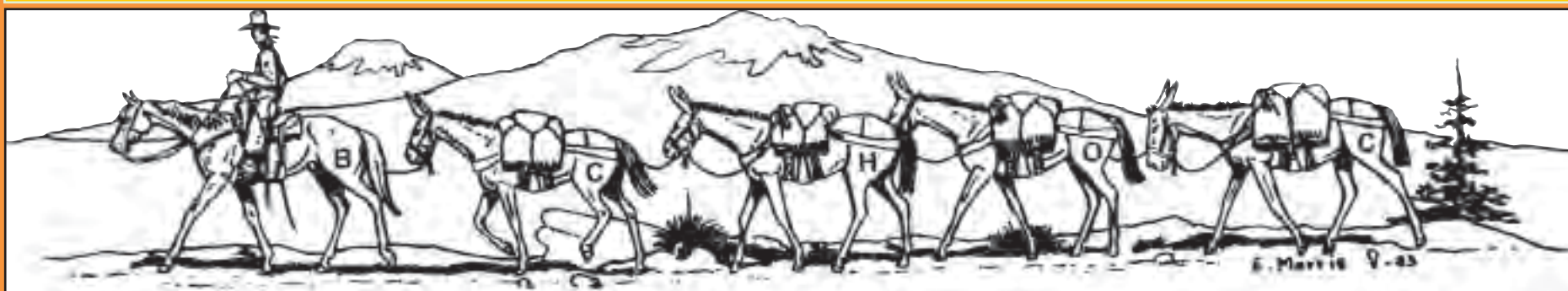
BCHC

BACKCOUNTRY HORSEMEN OF
CALIFORNIA
13061 Rosedale Hwy
Suite G, Box 217
Bakersfield, CA 93314

ADDRESS SERVICE REQUESTED

NONPROFIT
Organization
U.S. Postage
PAID
Manteca, CA
95336
No. 43

The Backcountry News



Volume 19, Issue 3

The Official Publication of Backcountry Horsemen of California

Fall 2012

2013 Rendezvous to be Held in Norco - "Horsetown USA" - Southern California!!! March 22nd-24th, 2013 at the George Ingalls Equestrian Event Center

Please join us in Norco for the 2013 Annual Rendezvous, where you can experience "City Living in a Rural Atmosphere". Norco is known for its animal keeping practices and lifestyle—where every street has a horse trail! Upon exiting the 6th St. off ramp off the 15 freeway, going east for 2 miles through Old Town Norco you will quickly see Western themed businesses, horse trails instead of sidewalks with split rail fencing and plenty of cowboys and cowgirls riding through town—taking you right up to the Ingalls Equestrian Center.

The idea of having the next Rendezvous in Southern California was initiated due to the fact that the last Rendezvous in "the South" was almost 15 years ago! This will give everyone a chance to see Norco, also fondly and appropriately nick-named "Horsetown USA". All the units from the North to the South are joining together to plan this next year's big event, so come prepared to learn something new, participate in a different event and have a GREAT TIME!

Within the next few months, we will be providing a flyer to include surrounding areas to explore within the region if you are traveling far and want to stay in the area to horse camp and/or want to visit surrounding regions and plan a vacation around also coming to the Rendezvous. Norco is less than 1 hour to local beaches, wine country in Temecula, Disneyland, Knott's Berry Farm, Universal Studios, Hollywood, as well as less than 2 hours from local mountains, Palm Springs, deserts and San Diego. There are plenty of day-ride trips to take if you are planning on bringing your equines, including the Hidden Valley Wildlife Wilderness Area adjacent to Norco.

Friday night entertainment will be provided by Dave Stamey, very well-known cowboy entertainer. In 2010 True West Magazine named him Best Living Western Solo Musician... For more info go to: <http://davestamey.com!>

Plans are being made for selling VIP seats, so be looking for this opportunity when you receive your 2013 BCHC Rendezvous registration packet. It will be a Great deal!



Rendezvous 2013

"From your Backyard, to your Backroads, to your Backcountry"

March 22-24 2013

George Ingalls Arena, Norco

- | | |
|-----------------------------------|---------------------|
| *Clinician- Jerry Tindell | *Trail Trials |
| *100 plus Vendors | *Youth Events |
| *Packing Classes | *Western Art Show |
| *Horsemanship Seminars | *Dutch Oven Cookoff |
| *Gentle Use Classes | *Auction and Raffle |
| *Beer, Wine and Cheese Fundraiser | *Cowboy Church |

FREE TO THE PUBLIC

The Backcountry News

An internal publication of the Backcountry Horsemen of California

Editor · Rhonda Strickland

Canyon Lake, California

(951) 951-522-8757

Email: news@bchcalifornia.org or BCHC.News@gmail.com

Backcountry Horsemen of California Official Website:

www.bchcalifornia.org

Printed by The Manteca Bulletin and distributed by

The Oakdale Leader

Publication Information: The Backcountry News is the official journal of the Backcountry Horsemen of California, Inc., published three times per year. All rights reserved. It is an independent publication with news and information of interest to Backcountry Horsemen members, with an average circulation of approximately 4000 per issue. Annual subscriptions are \$15.00 for non-members. Nonprofit postage paid at Manteca, CA.

Who is BCHC? The Backcountry Horsemen of California, Inc. is a 501c4 nonprofit organization incorporated in the State of California, March 13, 1990, with a 501(c)3 education foundation established in 2007. The Backcountry Horsemen of California, Inc., reserves the right to refuse any advertisements and/or articles that are inconsistent with the Backcountry Horsemen of California's objectives and purpose statement. Other material will be printed at the Editor's discretion.

Disclaimer: Articles and advertisements that appear in The Backcountry News do not necessarily reflect the position or opinion of BCHC or its officers and members. Nor does publication of said articles and advertisements constitute an endorsement of the views or of the goods or services offered therein that they may express. Accuracy of all material is the sole responsibility of the authors. BCHC is not responsible for unsolicited material of any kind.

Reader Submission: The Backcountry News welcomes reader contributions, event and calendar dates, and Unit news. These will be printed on a space-available basis. Submissions may be sent on disk in a Microsoft Word format, emailed or sent by regular mail. Longer articles are subject to edit for space at the discretion of the Editor. Photos may not be returned.

Deadlines: Advertising, announcements, pictures and other copy must be received at The Backcountry News by the deadlines listed below.

Deadline	Publication Date
December 17, 2012	January 2013 - Winter
April 19, 2013	May 2013 – Spring/Summer
August 19, 2013	September 2013 - Fall

Advertising Rates per Issue: Rates effective January 2012. All ads must be paid in advance.

Number of Issues:	1	2	3	4	
Full Page	\$150.00	\$142.50	\$135.00	\$127.50	Cost per Issue
Half Page (h/v)	\$100.00	\$95.00	\$90.00	\$ 85.00	
Quarter Page (h/v)	\$80.00	\$76.00	\$72.00	\$ 68.00	
Bus. Card (h/v)	\$25.00	\$23.75	\$22.50	\$ 21.25	

Advertising: All ads must include all fonts and images used in artwork. Ads must be at a resolution of 300 pixels per inch at the actual size used in the artwork. Mail payment to the BCHC Treasurer. Checks returned from the bank will have a \$25.00 return check fee. No advertising will be accepted from advertisers with outstanding balances. Liability by The Backcountry News shall not exceed the space occupied by the error. Never shall The Backcountry News be liable for any general, special or consequential damages. All claims for adjustments must be made within 30 days of the first publication of said ad.

2012 Executive Committee

President

Dennis Serpa • (209) 848-4017 • dmserpa@cwnet.com

1st Vice President

Richard Waller • (805) 489-8885 • homeranch@gmail.com

2nd Vice President

Carrie Johnen • (209) 245-5617 • CJubilee@comcast.net

Secretary

Kaye Bruns • (661) 944-4927 • kowgrl@juno.com

Treasurer

Lynn Joiner • (661) 747-6347 • lynnjoiner@sbcglobal.net

Vice President of Public Lands

Bob Magee • (209) 838-3609 • sanbobs1@live.com

Co-Vice Presidents of Education

Lisa Deas • (831) 402-7482 • muledaze@yahoo.com

Dan Horn • (707) 544-4543 • bearstrap@msn.com

BCHA Executive Director

Rick McLean • 704-677-6749 • ExecDirector@backcountryhorse.com

BCHA National Directors

Ann Lange • (760) 378-2113 • kvvet@onemain.com

Pete Kriger • (909) 910-4619 • pkriegerjr@yahoo.com

BCHA Alternate Director

Dan Clifford • (619) 659-3038 • bigeasycowboy@mac.com

2012 State Coordinators

Accounting

Weir and Associates • (661) 323-1514

Annual Meeting

Kaye Bruns • (661) 944-4927 • kowgrl@juno.com

Newsletter Editor

Rhonda Strickland • (951) 522-8757 • news@bchcalifornia.org

Insurance

Sam Burrows • (209) 547-5975 • sburrows@frontier.com

Membership

Chip and Linda Herzig • Toll Free: (866) 748-2033 • membership@bchcalifornia.org

Rendezvous General Chairman

Larry Shuman • (530) 526-0590 or (530) 941-8529 • lshuman62@gmail.net

BCHC Youth Coordinator

Karen Lopes • karenlopeshorseshoes@att.net

Web Coordinator

Lisa Deas • (831) 402-7482 • muledaze@yahoo.com

President's Page



Greetings BCH,

I hope all is going well with your summer projects. Summer is all but over but our work does not stop when school starts. It's time to assess what we've accomplished and start thinking of our winter projects to lay the ground work for next season. We never get done with planning; it just goes on and on.

Our summer Executive Committee meeting was just completed at Kennedy Meadows North. We had three days of intensive meeting time and we got a lot accomplished. You will see the fruits of our labor at the Fall meeting. A lot of work was done on changes to the bylaws to clean up language and some additions to make the organization stronger. These will be presented to the BOD on Oct. 14. The BOD will receive the draft in early September so there will be time to discuss at your local units. We discussed the proposal from BCHA about raising dues! It's never a good time to think about increasing your investment in the back country. It's been said we should do more fundraisers to fund our organization, but if we go that route the one's sitting at your local meetings are the people that have to do all the work. By raising dues the dollars raised are shared through- out the membership. This spreads the dollars generated over all the members, not just the

ones that do all the work. I hope this last year of issues with access in the Sequoia- Kings Canyon has given our members a reason why we need to have a Legal Fund to protect our interests in the back country. You witnessed what BCHC and BCHA can accomplish with a nation- wide effort that came together to get HR4849 passed through the House and Senate in record time. Luckily we did not spend many dollars, but it could have cost us significant dollars to get this legislation passed. We have to establish a legal fund to be able to counter the efforts of those who want to eliminate us from the back country.

During our meeting we discussed the possibility of doing four newsletters or instead maybe doing some public advertizing in horse related magazines. We will have some ideas to go over at the Oct. meeting.

We covered a lot of ground during our meeting, but we also covered some rocky trails going up to Kennedy Lake for an afternoon ride. We had to remain focused on why we do what we do!

Heading to the back country for another trail clearing project, see you on Oct. 14.

Dennis M Serpa

PS. Just got done making a major investment in getting to the back country - \$4000 in a new transmission!!!



MARK YOUR CALENDARS

BCHC Rendezvous 2013

Will be held in Norco.

March 22 - 24, 2013

George Ingalls Equestrian Event Center

BCHA

2013 is the 40th Anniversary of BCHA

Next year, 2013 will be the 40th anniversary of the creation of the Backcountry Horsemen of America. To commemorate the start-up of BCHA and the evolution of the organization over the past four decades a number activities have been planned.

To remind all BCHA members of our 40 birthday, a specially designed bumper/window sticker will be designed & made available. Members will be urged to proudly display this special logo.

In searching the archives we have found a good number of articles which trace our history. Of special interest are interviews of the founding fathers. Some of these will be reprinted as they give good insight into what BCHA is all about from the very beginning.

The 2013 National Board meeting will be held in Rapid City, South Dakota. The Black Hill BCH will host a bus trip from Rapid City to the Mount Rushmore Memorial to view the inspiring service and light show at the "faces" conducted by the National Park Service. This is a definite must see.

Each state will be asked to submit one [1] colored photo of an event, activity, meeting, work project, scene, something which depicts the spirit of BCHA and that particular state. These will be published as a "photo" supplement or edition - tentatively in the Fall Edition 2013 of the newspaper.

*Al Sammons
40th Chairman
BCHA Wyoming*



40 Years

BACK COUNTRY HORSEMEN OF AMERICA



1973 - 2013

In Remembrance



Irene Cochran passed away on Thursday, April 12, 2012 at the age of 95. She was born Irene Ann Hanson in Muskegon, Michigan in January, 1917, to Mandus and Anna Hanson, immigrants from Sweden. At the age of thirteen, Irene moved to Redondo Beach, California. Irene graduated from Redondo High School and worked in a bank.

In 1940 Irene married

Max Cochran, a Palos Verdes school teacher who hailed from Dinuba, California. In 1942 they moved to Dinuba, where Max became the principal of a country school. Irene raised four children while working as a legal secretary in both Visalia and Tulare. She was an avid reader and a gifted artist whose paintings are treasured by her family.

In her later years she began painting Swedish designs on furniture; her novel creations were inspirational to friends and family alike. While living in Three Rivers during the final decade of Max's career, Irene joined a group of accomplished weavers who wove garments and fabrics. Her large loom, a fixture in the Cochran household, produced many beautiful items.

Irene's typing and editorial skills were put to use typing for her husband as well as countless papers for her children. After Max's retirement in 1976, Irene and Max were instrumental in founding the High Sierra Stock Users Association, later known as the Backcountry Horsemen of California. The couple published a newsletter for the association. In their honor, the Backcountry Horsemen of California established the annual Max and Irene Cochran Award for the chapter that publishes the best newsletter.

Following Max's death in 1996, Irene established the Max Cochran Family Scholarship at the Visalia Education Foundation. For many years this scholarship has been awarded to a deserving Visalia high school senior with financial need who was pursuing a career in education or a related field.

Published in Visalia Times-Delta from April 18, 2012

BCHA

Back Country Horsemen of America Double Diamond Award

by Sarah Wynne Jackson

As the United States’ leading organization defending our right to ride horses on public lands, Back Country Horsemen of America are people who pursue excellence in all they do, from clearing trails and repairing bridges to promoting horse-friendly legislation. Appropriately, they go out of their way to recognize those who go above and beyond with the Double Diamond Award.

Recognizing Excellence

Established in 2003 by the National Board of Directors, the Double Diamond Award honors special projects and programs that best exemplify collaborative spirit, community awareness, and devotion to the mission and purpose of BCHA. Eligible projects and programs include, but are not limited to, trail maintenance, trail construction, trailhead construction, educational programs and youth programs.

Applications are judged on the scope and purpose of the project; the ways that the project improved access or benefited the general public or public lands; what was involved in organizing the project; and how the project was accomplished from conception to completion. Applicants may include letters from agencies or private parties that worked with them on the project. Winners are announced at the Back Country Horsemen of America National Board Meeting annual banquet.

Last year, there were six nominations for the Double Diamond Award. As is true every year, all the nominations are outstanding. They demonstrate the broad spectrum of work, dedication to the job at hand, and love of the back country that typifies Back Country Horsemen of America.

Winner of the 2011 Double Diamond Award:
John Burns of Salmon River Chapter of BCH Idaho

Demonstrating great initiative, John organized the first annual Heritage Days, a successful two-day event giving participants a taste of back country living, held at Sacajawea Center in Salmon, Idaho. Programs covered many BCH interests such as Leave No Trace, navigating the Rockies without GPS, and packing demonstrations, to illustrate life in the Salmon River area before it was settled.

All Back Country Horsemen activities were held in a camp-like atmosphere, called Camp Discovery. The chapter provided all tents, equipment, handouts,

brochures, and maps for the event. The winner of this year’s Double Diamond Award covered all points of the BCHA mission statement: it involved the public (especially youth), was informative to the public, and everyone, volunteer and visitor alike had a fun.

Selway-Pintler Wilderness Chapter of BCH of Montana

The chapter submitted for consideration several projects they worked on this past year, including their Back Country Youth Day. Partnered with Future Farmers of America and 4-H students, this program gave local youth a glimpse into the “back country” lifestyle, such as packing and Dutch oven cooking.

This BCH chapter also provided labor and pack support to Forest Service employees for restoration of the May Creek Cabin on the Lewis and Clark National Historic Trail in western Montana. These hardworking folks used horses and mules to haul 43 loads of shingles, cement, tar paper and native rock, weighing over three tons, a total of 172 miles from the trail head to the cabin site.

John McGray and Annette Howell of Los Padres Chapter of BCH California

Although the Gifford Tank Project required the effort of many volunteers, it was John McGray and Annette Howell’s leadership, very typical of BCH members, which made it happen. John realized that the water tank above the old Gifford Ranch house was seriously dilapidated. Located east of Santa Maria on California Department of Fish and Game land and surrounded by the Los Padres National Forest, it provides water to a system of troughs used by livestock and wildlife.

Annette secured financial assistance from the Rocky Mountain Elk Foundation and a new tank was purchased in 2010. The Forest Service supplied a helicopter to fly the new tank in to the location and fly the old tank out. This project is another great example of how Back Country Horsemen of America folks work with other groups to accomplish a common goal.

Everett Lewis of Traildusters Chapter of BCH Washington

Exhibiting the “can-do” attitude seen in many BCH members, Everett Lewis expanded on a previously produced poster titled “What a Horse Sees,” which

educates hikers and cyclists about what to do when they encounter a horse on the trail.

Everett gives many presentations on this topic at cycle shops but did not have visuals, which he felt would explain the message with more clarity. After many hours of preparation and filming, Everett has produced a short video he shows to the public, which is also posted on YouTube. In addition, he created a website and a Facebook page. His efforts have helped make the trails safer for all user groups when coming upon horses on the trail.

BCH of Central Arizona

This nomination is a glowing example of how Back Country Horsemen of America members seek to share trails and solve conflicts amicably rather than exclude other trail users. Three recent unfortunate incidents between equestrians and mountain bikers on trails brought attention to the issue of riders and mountain bikers using the same trails. A few riders believed that cyclists should not be allowed on the same trails as horses, hikers, walkers, etc.

In May of 2010, at the request of The Prescott National Forest, chapter members of BCHCAZ along with two other large equestrian groups and all other area trail users, (hikers, bikers, offroaders, bird watchers, outdoorsmen) formed the Prescott Trail Safety Coalition. The coalition came together to work out solutions regarding safe trail use through new signage, education on and off the trails, line of sight trail clearing etc. This effort has resulted in trail users working together to make our trail safer for all users and created many new friendships.

Bud Bailey of Priest River Chapter of BCH Idaho

This project at Trail Creek Trail, part of the trail system of the northern Cabinet Mountains of Idaho, took three years to complete. The trail head had no amenities, inadequate parking, and horse use was limited due to the lack of a turn-around for rigs and poor connector trail access to the rest of the trail system.

Under the leadership of Bud Bailey, the chapter and members of the community volunteered their time, labor and materials to construct horse corrals, highline, hitch rails, tent pads, ample parking, and a modern vault toilet. They also refurbished the connector trails. The result is a modern, user-friendly trail head for all trail users to enjoy.

BCHA

Welcome Our New BCHA Chairman of Public Lands Wayne Ludington

According to Michael K. McGlenn, Chairman BCHA, Wayne Ludington of Utah has agreed to take on the position of Public Lands Chair for BCHA. Wayne has been involved with public lands for many years and brings some good background to this position. Wayne will be putting the committee together using some past folks and some newer ones. Our goal is to have a year around functioning committee that represents BCHA regionally across the nation. If there is an issue that relates to public lands in any area, this committee needs to hear about it. They will review and discuss these items and advise BCHA on what is going on in this arena.

Here is a bit about Mr. Ludington in his own words; I retired from the Bureau of Land Management after 35 years of service in various offices in New Mexico and Utah . I grew up riding horses in Iowa . As there were few public places to ride horses, my riding was limited to neighbor's fields (frequently without permission.) I moved to New Mexico , where I finished my BS in Wildlife Management at New Mexico State University . This is where I learned the wonders of having public lands to roam on. I got back into horses when we moved to Utah . Here I learned about the pleasures of riding horses on miles of trails and thousands of acres of public land. Many of our land managing agencies are losing their expertise on equestrian use. Although they remain dedicated to recreation management, too frequently they do not know equestrian user's needs.

Contact info:
Wayne Ludington
435-650-3639
papakaz1@yahoo.com



BCHA Wilderness Advisor, Randy Rasmussen

Randy Rasmussen has been selected to serve as BCHA's new Senior Advisor for Wilderness, Wildland Recreation, and Trails Management. BCHA's legendary Dennis Dailey, who retired recently, endorsed securing Randy as his replacement.

Randy recently served as executive director of Umpqua Watersheds, a southwestern Oregon conservation group, and as senior policy manager for American Hiking Society. From his office in Corvallis, Oregon, he coordinated and unified the conservation community's response to recreation and "Travel Management" plans undertaken by each of Oregon's 11 national forests. In this role, Randy applied policy, grass roots organizing, science and economics in the protection of wildlands and traditional "quiet" recreational uses. He forged partnerships with hunters, anglers, horsemen, mountain bikers and other stakeholders. His most recent non-profit consulting clients include Responsible Trails America, which promotes common-sense off-road vehicle law enforcement and management practices.

Randy currently serves on the Oregon State University Forests' Recreation Advisory Committee. He was appointed by the U.S. Secretary of Agriculture to represent dispersed recreation on the Oregon Coast Range Provincial Advisory Committee, which advises local offices of the U.S. Forest Service and Bureau of Land Management (BLM). He served as field representative in the southwestern U.S. for two other national non-profits—The Wilderness Society and National Parks Conservation Association.

Randy is a founding board member of Trailkeepers of Oregon and once worked as a seasonal ranger in western Colorado for both the BLM and U.S. Forest Service. He earned a Master's degree from Colorado State University in Natural Resources and Recreation, emphasizing Wilderness Management. He has over a decade of experience as a consultant to state and federal agencies throughout the western U.S. preparing environmental impact documents and resource management plans.

Randy has three children and his family enjoys hiking, biking and horseback riding. After founding a consignment tack shop in Corvallis, his wife became an equine hoof-care specialist (i.e., "barefoot farrier"). His family owns and rides four trail horses including Randy's favorite, a Kiger mare.

BACKCOUNTRY QUICK TIPS

Light in the Darkness

Solar lights can come in very handy around the camp. Attach them with velcro or zip ties to various locations outside on your trailer. Place a couple just outside your camper or tent. They will provide light in case you need to get up to check on your horse during the night.



Thank you Trail Blazer Magazine for this handy tip.

BCHC

Youth Coordinator News By Karen Lopes

Hello All!

Hope you have been having a wonderful summer with lots of opportunities to visit the back country! I have been lucky enough to spend more days in the high country than in the hot valley, so I am lucky enough!! I am currently working on a project to involve youth here at our local Mid Valley Unit. I have been talking with one of the directors of the local Boy Scouts of America, and we are in the initial stages of planning a service project for the summer of 2013.



I am in desperate need of more time to plan and organize events here at the local level, and so it is with some regret that I have resigned from the State Youth Coordinator position. We are in the process of finding someone to take my place, so if you are interested, please call Dennis Serpa, Dan Horn, or myself.

I will continue to be involved with education through the Wilderness Rider program, and of course, continue to work to get more youth involved in our great organization. Whoever is appointed to the Youth Coordinator position can certainly feel free to call me for help at any time. I have more ideas than I have time, and would be glad to share my thoughts with you. I certainly hope that the Kids' Incentive Program at the Rendezvous will continue, and I will definitely offer my assistance in helping the next Youth Coordinator in organizing the classes and the program.

Although it has been a short tenure, I have a new appreciation for the Executive Board. The time and dedication that your board members commit to their positions is amazing. I am overwhelmed by their commitment. While participating in the various meetings throughout the year, I have seen the passion that drives these volunteers. I will continue to work to involve more youth at my local unit, and will share these projects with the new State Youth Coordinator. If you have a successful project that involves youth, please share it with the rest of us!!

It was a great honor to be a part of the State Executive Board, and I would like to thank them for their support. See you at the next big BCHC event.

OBJECTIVES AND PURPOSE of the BACKCOUNTRY HORSEMEN OF CALIFORNIA (from the BCHC Bylaws)

- To improve and promote the use, care and development of California backcountry trails, campsites, streams and meadows; to advocate good trail manners.
- To promote the conservation and utilization of our backcountry resources in concert with livestock transportation.
- To keep the backcountry trails and forage areas open to horsemen on all public lands.
- To keep current information before the Corporation membership and its local Units regarding new legislation or management plans related to government regulations of the backcountry.
- To support or oppose new proposals, plans and restrictions as related to the interest of horsemen and those persons interested in recreational stock use and enjoying the backcountry.
- To promote the interest of people who, due to health or physical factors, need transportation other than by foot on backcountry trails.
- To promote public awareness and interest in the historical aspect of horsemen and stock in the backcountry and to help educate backcountry users on ways to use the trail and forage in a manner that conserves the backcountry resources.
- To assist in keeping the public informed of the vital need for a clean backcountry.
- To promote a working relationship with and keep the work and interests of the Corporation before our local, state and federal officials.
- To assist in the formation and continuation of local Units to carry out these purposes

GET INVOLVED, DO YOUR PART

FINAL NOTICE: At the direction of the BCHC Executive Committee, we will no longer send out membership renewal verification "green slips" via regular mail. Instead, each unit president & membership chair will get a personal email from the BCHC Membership Chair (Chip Herzig) with each units' data AND it will be put on the web page in the password protected section.

BCHC

FALL STATE BOARD MEETING OCTOBER 12-13, VISALIA

The upcoming Fall State Board Meeting and election of officers will be held in Visalia at the Holiday Inn Conference Center, Friday and Saturday, October 12-13, 2012.

Holiday Inn Hotel and Conference Center
9000 West Airport Drive, Visalia 93277
Special BCHC price: \$79/night + tax.

Let the hotel know it is for the Backcountry Horsemen meetings.
Reservation phone #: 1-800-465-4329

Directions:

Take Hwy 99 to the Visalia exit. The hotel is literally right there on the cusp of Hwy 198 and 99.

Meeting Schedule:

Executive Committee meeting: Friday, October 12, Plaza Room
Dinner: 6:00pm, Meeting 7:00 -10:00pm (dinner menu and RSVP sent in the 45-day mailing)

Public Lands Meeting: Saturday, October 13, Plaza Room,
9:00 - 11:30am, pre-ordered lunch available (info sent in 45-day mailing)

Education Meeting: Saturday, October 13, Birch Room,
9:00 - 11:30am pre-ordered lunch available (info sent in 45-day mailing)

Board of Directors Meeting: Saturday, October 13, Plaza Room,
1:00 - 5:30pm.
Saturday night dinner and unit reports at the Farm Bureau in Visalia:
information/reservations sent in the 45-day mailing.

*Directors will receive more details in the 45-day notice packet.



Hotel's website is: www.visaliaca.holiday-inn.com

We Won!!

The Sequoia and Kings Canyon National Parks Backcountry Access Act (aka SEKI) House Bill 4849 Passed & Signed into Law!

On Tuesday, June 5, 2012, the President signed into law:

H.R 4849, the "Sequoia and King Canyon National Parks Backcountry Access Act," which directs the Secretary of the Interior to continue to issue authorizations to commercial pack stock operators within designated wilderness areas of the Sequoia and Kings Canyon National Parks in California.

"In what had to be music to the packers' ears, Judge Richard Seeborg wrote, "It is not appropriate for one group of park users to impose its vision of wilderness etiquette over others. While plaintiff is correct that the Wilderness Act's purpose is to maintain the primitive nature of park areas, the Ninth Circuit has repeatedly explained that in complying with the Act, agencies must engage in a 'delicate balancing' because Congress 'did not mandate that the Service preserve the wilderness in a museum diorama ... Instead, Congress stated that the wilderness was to be preserved as wilderness and made accessible to people devoted to the public purposes of recreational, scenic, scientific, educational, conservation and historical uses.'" The article stated: The only glitch is a 20 percent reduction in Stock Use Nights from 2007 levels, from a base of 3,200 to 2,650. The Sequoia Access Act, H.R. 4849, passed by the House in mid-May, had set use limits at 2011 levels, a short season for packers and guides due."

Items in italics reprinted from The Inyo Register June 4, 2012 by Deb Murphy/Sports Editor



BCHC

Rendezvous 2012

Winning Tickets get the goods

Every year a raffle is held at the Rendezvous to raise funds and every year, normally there have been two prizes offered. Lately one of those prizes has been a round pen, which I know for me, is the reason I buy the tickets. And the second prize is always a something different. It could be something like a mule or a mustang, but this year it was a pack trip into the backcountry with all needs taken care of.



Dan & Joan Trabucco

This year the winner of the Round Pen was Tom Berry from Weed, California. The winner of the Pack Trip was Joan Trabucco of Scott Bar, Ca. Joan is a Board Member of the Top of the State Unit. Now we should not want to say anything about how the top of the state gets these winning tickets. But Joan and her husband Dan were offered several destinations they could choose from in the Trinity Alps Wilderness to have their trip.

The Shasta Trinity Unit put on their annual Clair A. Hill Memorial Fish Plant Dinner at Alan and Bev Hill's ranch near Trinity Center on Thursday July 26th and the Trabucco's were invited to attend and enjoy the food and fun prior to their trip. The destination Joan and Dan chose was to go up the Stuarts Fork of the Trinity Alps Wilderness Area. Sam Burrows had arranged to have Maverick Outfitters sponsor the trip, and those who went on the trip were either from Top of the State or Shasta Trinity Units. Those who attended were; of course Dan and Joan Trabucco along with Sam Burrows, Larry Shuman, Suzie Blackburn, Marsha Kulyn, and Laura Rodger.

On Friday July 27th, all packed up, they headed out to Morris Meadows, where they camped both Friday and Saturday nights. The trail to Morris Meadows is very narrow and steep causing concern in some of the



Sunday Water Crossing

riders, crossing a couple of bridges, and one of which swallows animals we have been told. Sam had a little trouble with one of his mules wanting to do circles, but all made it in fine fashion to the destination. Though, later, a horse new to hobbles found the ground a good place to fall upon.

The meadows were full of feed for the horses and mules which they had to share with a big group of deer. The feed for the people was almost five star quality offered by Sam the cook, producing Prime Rib with Asparagus and Baked Potatoes on Friday night. On Saturday the 28th, everyone saddled up for a ride up to Emerald Lake



Sam the Cook

where they met Matt the USFS packer with three other members of his crew. The crew was there to investigate a reported fire; they had discovered a hiker had made a warming fire next to a snag, which they took care of in fine fashion.

It was decided to take the hiking trail from Emerald Lake to Sapphire Lake for a swim and to check out the old mining equipment. Dan Trabucco showed his skill at fishing by catching and releasing a large number of trout to his great satisfaction. Saturday night Sam the cook again showed his skills by producing a large pot of spaghetti, with prime rib, hamburger, and mushrooms along with French bread smothered in Garlic spread. The USFS crew joined in for the dinner and Matt shared many interesting stories.

Everyone helped with all the camping tasks, and all said they had a lot of fun and did not want to head on home. This sounds like a very familiar note to me, not wanting to leave the Wilderness.

Well I am not sure what the prizes will be for the tickets next year, but you sure do not want to pass up a fun adventure like this, or the round pen that seems to be listed on the ticket every year.

Story & photos submitted by Bob Magee

BCHC

BCHC Dues Increase Proposal

By Karen Lopes & Dan Horn

The news is spreading like wildfire that the National Board approved a \$5 increase in the National dues. The truth is that a proposal came out of the National meeting in Eugene this last April and each state has to individually approve it before it is official. The BCHA increase can not go into effect until 2015 because there must be two readings of a by-law change and BCHA only meets once a year.

In addition, the BCHC Ex Board is proposing at the October meeting an additional \$5 increase, making the total proposal a \$10 increase for yearly membership dues. Ouch! I know that many of you are thinking "That's outrageous!" However, there are several reasons that validate this move. Please read this entire article with an open mind! Who in their right mind wants to pay more for something?? Not I! But you will see that this dues increase proposal is the right direction for us to take. The \$5 state dues increase would go in to effect after the second reading in February once approved by the directors.

While we are still in tough economic times, there are multiple reasons why this is a necessary action. At the National level, there are several paid positions, and the dues increase is critical in order for these salaries to be paid. Our organization has grown, and we are a powerful voice in Washington, D.C. There, if we relied only on volunteer efforts to voice our concerns and push our mission, we would be ineffective. Other special interests groups have many paid, professional lobbyists to implore their concerns. Constant vigilance is necessary in the political world, and our paid members are earning their salary every day, even sometimes just by their presence.

Here at the State level, we have been trying to hold some type of fundraiser for several years now, without much success. Even with the many different fundraising ideas, why can't we agree to one of them? I have a theory on that: Even though we may have roughly 3000 members in BCHC, we all know that many of our members are just dues payers, and don't get involved with much else. This isn't a bad thing; they are doing what they can to support our organization. However, if we had a state-wide raffle, or calendar sales, who would be doing all of the work? The same 10% that are the board of directors, sit on committees, and are the event chairmen who participate in nearly every BCH activity. How can we take on more to do? If this dues increase passes, it spreads the investment to everyone equally. Yes, we may lose a few members because of it; but we just have to decide how strongly we feel about our right to ride on public lands. My passion for riding and packing in the backcountry is worth much more than \$10!

Let me give you the breakdown of where the money goes. Of course, \$5 of the \$10 proposed state increase will go directly to the BCHA. Again, this increase will be utilized to pay those persons who are working every day, mostly in Washington, D.C., in order to keep our interests in front of Congress. The additional \$5 increase that will be controlled by our state breaks down like this: \$2 will go into the Legal Fund. Another \$2 will go into the BCHC 501-c3 Grants Fund. The last \$1 will be deposited into the 501 C4 budget.

Along with several other by-laws changes that are proposed for the October meeting, the Ex Board is proposing a change to Article IV, Section 2, Dues and Fee Structure. Our current by-laws read (One half of each Individual or Family Membership dues shall be distributed to the appropriate local Unit and the balance shall be retained by the BCHC, Inc.'s treasury as operating funds.) With BCHA's share of dues growing over the years, The Ex Board is proposing that this be changed to read (One half of each Individual or Family Membership dues less the deduction for the National (BCHA) membership dues shall be distributed to the appropriate local Unit and the balance shall be retained by the BCHC, Inc.'s treasury as operating funds.) With out this change, the State portion of the dues is even smaller than it is now. Several years ago BCHA approved a small dues increase, and BCHC did not pass that on to the members. They actually absorbed the loss out of the state portion to keep individual dues unchanged. So it has been a number of years since BCHC has asked the members to pay a little more for their membership.

Legal Fund

Why are we forming a Legal Fund? The recent lawsuit involving the High Sierra Hikers Association and the Sequoia-Kings Canyon National Forest put commercial packers' and all stock users in jeopardy. As stock users, we are on constant vigilance to other user groups that may try to restrict stock use on public lands; whether commercial packers or private. When issues such as this arise, we have to act. BCHC did, and the result was very favorable for the commercial packers and our organization. BCHC needs to plan ahead and be prepared because it seems we are facing more pressure from the agencies and other user groups concerning our access to public lands with our stock. This money, raised in part with the proposed dues increase, will be used to protect our access to public lands, one of our most important objectives as Backcountry Horsemen. Five to Six thousand per year is not a lot when it comes to legal action, but it is a start.

501-c3 Grants Fund

Our 501-c3 Grants Fund provides money for grants. This money is available to all units; it can be accessed with a properly completed grant application, and a worthy project that addresses the objectives of BCHC. Grants can be used to help fund a number of service projects; such as trail maintenance, LNT Education, Youth Activities, and trail maintenance/building equipment, just to name a few. Our Mid Valley Unit recently acquired a new Brush Cutter to help with our trail maintenance in the front country with money from a State 501-c3 Grants Fund.

Finally, I believe most people can understand the need for our dues increase. Some of you are just wondering where you are going to get that extra money to pay your dues. Many people today are balancing their budgets without much to spare at the end of each month. If your passion for the backcountry is true, you will give up two Starbuck Grande Café Mochas for one month to make up that dues increase. Please consider the need we have for this dues increase, and don't let \$10 jeopardize our access to public lands with our favorite horse or mule!

Public Lands

READ, DISCUSS, ACT

Hidden California state parks funds spark outrage

By Matt Weiser and Kevin Yamamura—mweiser@sacbee.com

Published: Saturday, Jul. 21, 2012 - Last Modified: Wednesday, Jul. 25, 2012 -

Submitted by Barbara Gronek

California state parks Director Ruth Coleman resigned and her second-in-command was fired Friday after officials discovered the department has been sitting on "hidden assets" totaling nearly \$54 million. The money accumulated over 12 years in two special funds the department uses to collect revenue and pay for operations: \$20.4 million in the Parks and Recreation Fund, and \$33.5 million in the Off Highway Vehicle Trust Fund. The money accumulated, state officials said, because the parks department had a pattern of underreporting the actual size of the funds in its regular dealings with the state Department of Finance.

Why and how this occurred remains a mystery and will be the subject of investigations launched Friday by the Department of Finance and the state attorney general's office, said John Laird, secretary of the California Natural Resources Agency, which oversees the state Department of Parks and Recreation and who announced the discovery of the funds on Friday. Officials said they don't yet know whether any laws were broken or if additional employees will be disciplined.

State officials did not directly say there was intention to keep the money secret. But they implied as much, with Laird terming the surplus "hidden assets." Coleman, the longest-serving director in the 150-year history of the parks department, said in her resignation letter she did not know about the surplus. Laird said it is not yet clear who is to blame for allowing the money to accumulate. "It's an incredibly troubling discovery," said Laird. "Ruth has stepped up and taken personal responsibility." Coleman submitted her resignation late Thursday. Her second in command, acting Chief Deputy Director Michael Harris, was removed from his job and no longer works for the parks department. Friday morning, Gov. Jerry Brown announced that Janelle Beland, an undersecretary at the Natural Resources Agency, would serve as acting parks director. Laird said, once the surplus was discovered, Brown moved immediately to begin investigating and inform the public.

"We can't answer every question because we thought it was more important, within 48 hours of finding out about it, to go public," Laird said. Advocates for the state parks system reacted with alarm and dismay. The money would have been enough to cover – twice over – the \$22 million in state budget cuts imposed on parks in 2011. In response to the cuts, the department moved to close 70 of the state's 278 parks, an unprecedented act. Virtually every other park has had its hours and services cut to save money.

Read more here:

http://www.sacbee.com/2012/07/21/4646682/hidden-parks-funds-spark-outrage.html#mi_rss=Top%20Stories#storylink=cpy

Feeding Horses in a Group Horses

Horses maintained in a herd will often establish a hierarchy. This pecking order must be kept in mind when attempting to feed horses in a large group. Aggressive or dominant horses might eat more than their share by chasing others away, and timid horses might not get enough feed. The goal of group feeding should be to allow all of the horses to consume enough feed to meet their requirements. In order to minimize injury when feeding a group, the most dominant horse should be fed first and the least dominant horse fed last. If feeding concentrates, feed tubs should be placed at least 50 feet (15.4 meters) apart and away from any fences. If using a trough system, offer multiple small troughs to prevent dominant horses from monopolizing the feed. It is a good idea to offer one more trough or feed bucket than there are horses in a pasture to allow each horse a better chance of consuming the feed. When feeding hay on the ground, scatter it in different locations, spacing piles a minimum of 50 feet (15.4 meters).

Reprinted from <http://www.equinews.com/article/feeding-horses-group> - submitted by Stacy Kuhns - Redshank Riders Unit President

Public Lands

Court Releases Final Decision on Eldorado National Forest Lawsuit

Submitted by Bob Magee

SACRAMENTO, CA (July 31)-- The Eldorado National Forest is free from preservationist litigation attacking a Travel Management Plan that originally closed just over 900 miles of roads and trails. Today Senior U.S. District Judge Lawrence K. Karlton issued his final order and judgment in a case originally filed in 2009.

The Court's May 2011 decision on the merits largely upheld the Eldorado travel management decision, denying preservationist demands for even more closures. Sadly, the court required further proceedings to address Endangered Species Act procedures concerning 42 routes that cross meadows. Today's order and final judgment, which terminates the case, determines that the Forest has fully complied with any Endangered Species Act concerns and adopts the Forest Service's proposed remedy over preservationist objections for continued travel along the meadow routes. According to the Forest Service, the meadow routes encompass a total of about 135 miles. Under today's order, access will be restored on about 46 miles of those routes, while about 89 miles will remain closed."

Pro-access recreation groups are disappointed with the order but glad to see the case concluded. Several key organizations participated in this suit and decades of litigation involving the Eldorado, including the California Association of 4 Wheel Drive Clubs (Cal4), California Enduro Riders Association, District 36 of the American Motorcyclist Association and the Blue Ribbon Coalition. Mark Cave, President of Cal4, observed, "We're concerned these closures are unnecessary and issued without legally required findings. But the "interim" status was complete closure of the 42 routes, so even this result is a step forward that allows some access." The Forest is completing renewed analysis and will issue a new decision on these routes.

Cave used the "David versus Goliath" analogy to describe how difficult it is to prevail against the well funded preservationist efforts. Still, none of the groups involved are willing to give up. "We encourage interested parties to stay in the loop, participate in the ongoing management process and help support whatever next steps the recreation groups decide to take." Cave added.

The case is entitled Center for Sierra Nevada Conservation v. U.S. Forest Service, Case No. CV-09-2523. A copy of the Court's order including a description of the 42 meadow routes may be viewed at <http://www.sharetrails.org/uploads/1...y.07.31.12.pdf>

Yosemite Park Merced River Plan

Submitted by Bob Magee

Some years ago the Yosemite National Park administration started the process of developing a plan to modify some of the historical structures and recreational activities within the Yosemite Valley area of the park. Since then a number of lawsuits have been brought about by interested

groups which have delayed the scoping process for the proposed plan. Earlier this year, following the typical legal process that has taken many years to resolve, the Park put out their proposed plan for public comment.

The proposed plan was made available to the public on the Parks website. Additionally there were a number of public meetings held in various locations so that people could make comments and suggestions about the plan. One of the concepts of the plan that created a lot of discussion was the removal of historical bridges that cross the Merced River in Yosemite Valley. You may have seen some coverage of this in your local newspapers as it continues to be a hot topic.

The plan had a number of "concepts" or different thoughts about possible changes within the valley. Of those many concepts, BCHC is most concerned about the proposed removal of the horse stable and subsequent building of campgrounds on that site which, in turn, would eliminate commercial horseback riding originating in the Valley.

BCHC feels that the removal of the stables and elimination of commercial horseback rides in the Valley would be a precursor to additional restrictions or elimination of stock use in the park. We felt that we should take some action to let the Superintendent of the Park know that equestrians and park visitors do not want the Park to even consider removal of the stables and elimination of the rides currently enjoyed by the Park visitors. BCHC asked their membership to write letters to the Superintendent of the Park to express their concern about the loss of this historic activity.

The Park recently published the content of all of the letters they had received regarding the Merced River Plan. There were 413 letters received. A significant number of the letters contained comments from people who did not want changes made to or removal of the High Sierra Camps, even though the High Sierra Camps were not addressed in the Plan. These High Sierra Camps are extremely popular and are reserved months in advance.

Of the 413 letters there were 117 letters with comments in favor of stock use in the Park. Of those 117 letters there were 42 letters in which the writer indicated that they were associated with Back Country Horsemen of America, California or Washington. Of the 75 remaining letters some either indicated they were associated with an equine group other than BCHC or they were not associated with any group. Overall this represents that 28% of the total letters received indicated they supported continued stock use in the park. This is a significant percentage in favor of continued stock use. Less than 1% of the total letters received opposed any stock use.

I want to thank all of you who participated in this write-in campaign and who shared the need to get other equestrians involved. Once again this shows how effective our group can be when we decide to get involved.



Public Lands

Rule changed by NPS to open more trails to bikes

The information and links below come to us from BCH Washington's Public Lands Chair, Jeff Chapman. This new rule with the National Parks will have an effect on a great many of you that recreate on the Park's trails. It will be very important that you and our members be in on the very ground floor with any public meetings relating to bike use on the Park trails. Now would be a good time to be sure your relationship with the park management in your area is in good stead. Providing public input both at meetings and in writing will be important. As we learn more we will get the information out to you.

Regards, Mike
8 July 2012

Michael K. McGlenn
Chairman BCHA

<http://green.blogs.nytimes.com/2012/07/06/making-way-for-more-bikes-in-national-parks/>

This year Congress intervened to permit stock packing on national parklands in the Sierra after a court ruled in a lawsuit filed by the High Sierra Hikers that the current system for permitting stock violated the Wilderness Act. Now bicycles are becoming part of the whose-trail-is-it debate. On Friday, the National Park Service published a final regulation in the Federal Register giving individual park superintendents the power to allow bicycles on existing or new roads and pathways.

<https://www.federalregister.gov/articles/2012/07/06/2012-16466/vehicles-and-traffic-safety-bicycles#p-130>

36. Comment: The proposed rule will increase bicycle use in the parks. This will have a negative economic impact as parks will lose revenue from hikers and equestrians who will visit other areas where they can enjoy the outdoors safely and in solitude, without interference from mechanical devices.

Response: According to a U.S. Forest Service study, "Updated Outdoor Recreation Use Values on National Forests and Other Public Lands." General Technical Report PNW-GTR-658. U.S. Department of Agriculture, Forest Service (Loomis, J. 2005.), the net economic benefits of mountain biking generally exceed those of either hiking or horseback riding. Nevertheless, the rule provides that new bicycle use on existing trails can be designated only if there will be no significant impacts, including impacts to visitor safety and user conflict. Therefore, any increased bicycle use resulting from this rule can only happen if the park determines that the designation of bicycle use will not impose significant impacts on other users, including hikers and equestrians.

Thank You
to the
Supporters
of the
2012 Rendezvous

Rock Creek
Pack Station Packing

Hawes Farm Supply
(Everything for the Farm)

Maverick Outfitters

Please support our benefactors



IMPORTANT REMINDER

Please remember to use the new address as the forwarding address for BCHC membership has expired:

BCHC Membership
PO Box 535
Beaumont CA 92223

Education

California Mission Ride

www.thecaliforniamissionride.org/

The California Mission Ride is a 600-mile horseback journey through California - stopping at each of California's 21 Missions, with fantastic community and cultural events scheduled at each stop. The ride is being undertaken by an eclectic group of riders which includes two Indian stunt riders/actors, a Hollywood director, a writer, and a high-school student, and the events include archaeological explorations, roundtable discussions, concerts, dinners, special behind-the-scenes Mission tours, storytelling events, and much more.

The ride kicks off in Sonoma with a reception at the Blue Wing Inn (already fully booked!) and daytime archaeology event at the mission on the 18th, and a wonderful send-off/ride-out (open to the public) at the Barracks at 9:30am on the 19th.

The riders will arrive at the Marina Equestrian Center (<http://www.marinaequestrian.org/>), Marina, CA hosted by me, Lisa Deas, President of the Steinbeck Country Unit on September 6th. The riders will camp overnight, shower nearby at CSUMB (California State University at Monterey Bay). Student interns from CSUMB will assist in the film editing for the documentary. Professor Ruben Mendoza of CSUMB will host an Archaeological Mystery Tour at San Juan Bautista Mission prior to arriving in Marina.

Steinbeck Country Unit is sponsoring the sleep over to include the local Central Coast Cert team (<http://centralcoastcert.org/>) providing a BBQ, BCHC member Margaret Davis (Director of Friends of the Fort Ord Warhorse) will give a presentation on the local Warhorse History and I will do a presentation of Who We Are and What We Do. The next morning will find us cleaning up, having breakfast and a Leave No Trace clinic kicking off the ride from Marina, down Del Monte Beach to Monterey. A photo opportunity will be next at the San Carlos Cathedral, The Royal Presidio Chapel (<http://www.sancarloscathedral.org>) and next we proceed to the Monterey Bay Aquarium to unload the horses on the Recreation Trail taking us along the beach, through Pebble Beach and finally to Carmel Mission. (<http://www.carmelmission.org/>)

We will be staying at the Little League field next to Carmel Mission with a full program the next day. On Sept. 9th, the team will trailer back to Marina, unload the horses then ride through the brand new Fort Ord National Monument, which has a portion of the DeAnza trail on the Salinas side of the monument. (http://www.blm.gov/ca/st/en/fo/hollister/fort_ord/index.html)

The California Mission Team will then head to Camp Warhorse (<http://warhorse.org/campwarhorse.html>), a partner with BCHC-Steinbeck Country Unit and Friends of the Fort Ord Warhorse.

(<https://www.facebook.com/pages/Friends-of-the-Fort-Ord-Warhorse/154523191227947>)

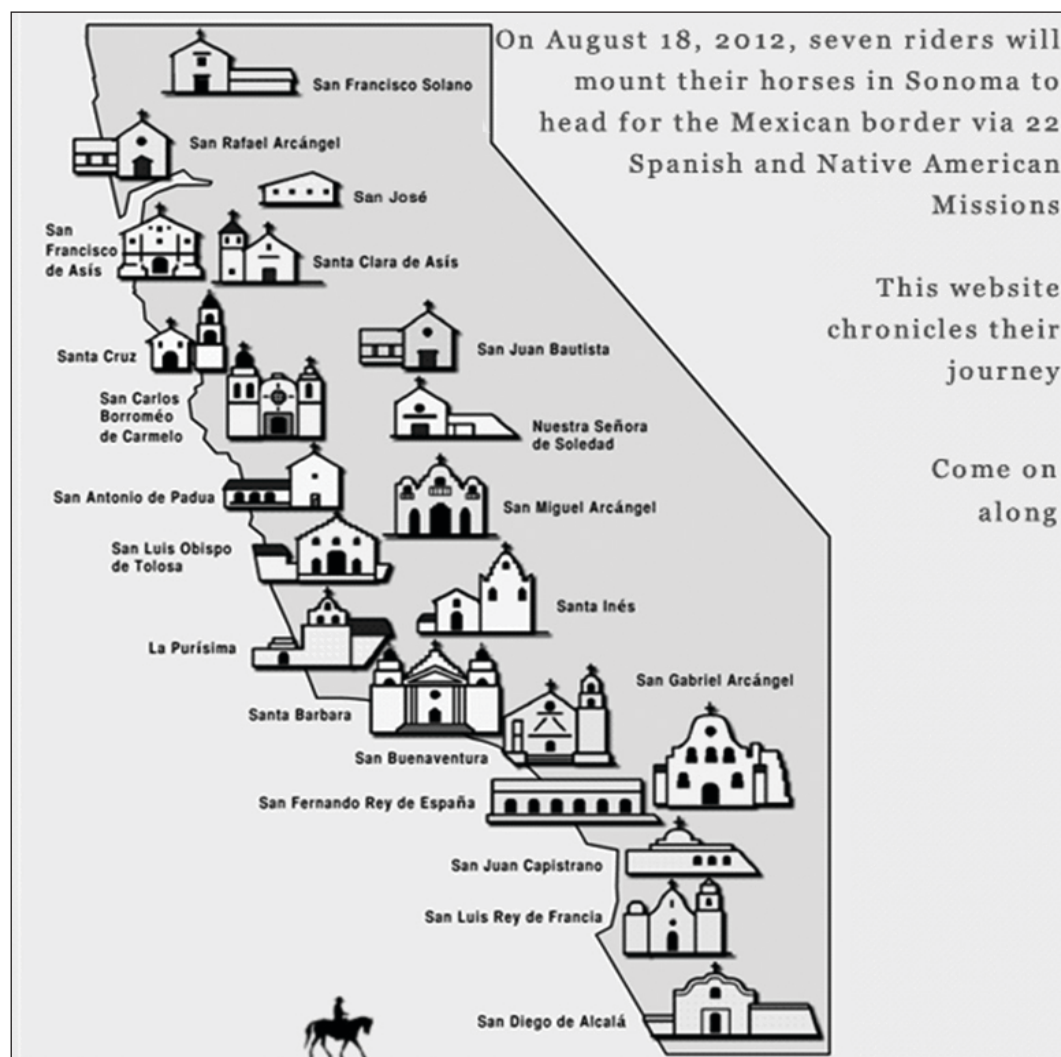
After spending the night at Camp Warhorse, the team will make their way to Soledad Mission (<http://missiontour.org/soledad/>) and then to Mission San Antonio where I will end my portion of the ride. The Team will have one more mission, San Miguel to wrap up this year's leg of the journey. Next year the southern portion will start.

A journalist from Western Horsemen magazine will be on a portion of the ride as well as other magazines. It will be a great way to let folks know about BCHC. Please follow our journey and feel free to join in with your horses & mules as we pass along the way. I hope this adventure will inspire you to donate, ride, and join the team this year or next.

Stirring up the dust in the city and on the trails

Yours truly, Lisa Deas

Co-VP of Education/BCHC - President, Steinbeck Country Unit



Unit & Local News

Shasta-Trinity Wins Big at Mule Days *Submitted by Bob Magee*

Redding, Calif. - Out of 700 mules competing at Mule Days in Bishop, Calif. on May 22-27, the four Region 5 forests that participated in the event won the grand prize for the nation's longest non-motorized parade. Shasta-Trinity National Forest won first place for the Trail Class division and second place in the Quality Mule shoeing competition.



Mule Days is an event in which mules and teams compete in several competitions. Over the five days of the event, there are 14 mule shows. The shows consist of: Western, youth, English, cattle working, gaited, coon jumping, racing, musical tires, gymkhana, packing, shoeing, chariot racing, team roping and driving.

The four Forests from Region 5 that participated in the Mule Days parade were the Stanislaus, Inyo, Shasta-Trinity and Sierra. The pack team consisted of four people from the Shasta-Trinity National Forest and one person from the Sierra National Forest.

"We took two mules, Little Richard and Bo Diddley and three horses, Pancho, Mendo and Bo. Our mules are very well trained to work in the mountains but they aren't exposed to blasting music, other mules racing around them, clowns jumping in and out of the arena and many other distractions. We were surprised how well they behaved under these conditions," said Wilderness and Trail Manager, Mike McFadin. "This was their first event and we are really proud of them."

McFadin described the Mule Days event as the Super Bowl of the mule world. "There isn't an event like it elsewhere in the world. Its part mule show, part test of skills and part Wild West show," McFadin said. "Over the five days of the event, more than 30,000 spectators came to watch 14 shows, featuring more than 700 mules with their trainers, riders and packers."

The Forest was invited to compete at this year's event unexpectedly. "In a last minute scramble, we staffed a team of five people. While other participating teams used modified equipment specifically for the event, we used the same gear we work with regularly in the woods to participate in the timed events," McFadin said.

Throughout the weekend many people took the time to locate the R5 pack team camp and convey their appreciation of the skills and abilities of the team. "Many people were truly delighted to see the Forest Service participating and thanked us repeatedly for taking time to come," McFadin said.

The team's Salmon River Pack Saddles, which are saddles designed to carry extremely heavy and bulky loads, were a big draw and many long-term stock users stopped by to view the saddles and asked about their use and history. "When these visitors saw the dates of manufacture, some as far back as 1933, they were in awe of the condition and obvious care that were put into maintaining these saddles that we use on a regular basis," McFadin said.

During the competition, the announcer let the audience know that the Forest Service pack team had hauled over 40 loads that week and would be resuming a busy pack season when they returned, starting the morning after the competition. The announcer also took the time to mention the history of the Forest Service pack program and that the team uses traditional pack equipment every day. More than once the Region 5 pack team received a standing ovation from the crowd.

Pancho Is New Head Honcho

John "Pancho" Smith Taking Over as Los Padres National Forest's Santa Barbara District Ranger

- At the end of July, Pancho left his current post as district ranger of the
- Croatan National Forest in North Carolina to take over as the head
- honcho of Santa Barbara County's most popular public landscape:
- the Los Padres National Forest's Santa Barbara Ranger District, which



extends roughly from Figueroa Mountain almost all the way to Highway 33, and then through the Santa Ynez River valley and over the Santa Ynez Mountains into the South Coast's trail-tracked frontcountry.

In case you don't know here is part of what a district ranger does:

- Basically, what I am is the overall manager of the unit, that being the ranger district for the U.S. Forest Service. My responsibility is many-fold.

- It is all the personnel stuff that has to be done. It is the budget that we need to stay on track with. It is all the administrative issues that need to be taken care of. It's making sure that the NEPA [National Environmental Protection Act] process is signed off on correctly. There's archeology, there's wildfire, there's, in some cases, timber production.

- To read more of this article go to <http://www.independent.com/news/2012/jun/28/pancho-new-head-honcho/>

Mule Days 2012



2012 Bishop Mule Days Celebration

BACKCOUNTRY HORSEMEN BEST FRIEND OF THE PACKERS

Bishop Mule Days 2012 by Carol Jo Hargreaves

When I heard BCHC was going to receive the "2012 Best Friend of the Packers" award at Bishop Mule Days Celebration, I was so excited and proud of our organization I knew I wanted to be there to be part of the ceremony.

Kathy Zumbrunn and Jon Caudill picked Larry and me up Friday morning of Memorial Day weekend and we took off for Bishop, planning to drive there via scenic Sonora Pass. Just before the turnoff to Yosemite a sign declared "Sonora Pass Closed", so we quickly revised our route plans and headed south. With each passing mile the weather became increasingly cold and dark. As we entered Yosemite National Park we met snow flurries and then full-fledged snow! Fortunately we made it over Tioga Pass before the Park Service closed it to traffic.

As part of the award activities, BCHC members were invited to participate in the Mule Days parade, a luncheon, and the award ceremony. Preparation for the parade began early Saturday morning. The weather had changed from cold and windy to clear and sunny. The ring of majestic mountains surrounding Bishop glistened with new-fallen snow. We got to the staging area and found several other BCHC members getting ready. Dennis Serpa was exercising his pack string; Lloyd Erlandson was riding a borrowed horse; Pete Kriger from San Geronio Pass unit was circling his pack mule; Antelope Valley's Dennis Harfman had packed his string and was riding with Dick Blizzard and Blair Caldwell; and Doc Carter of Eastern Sierra unit, organizer of our BCHC parade entry, was working with a nice-looking string.

Kathy Z., Michael King and I felt lucky to be invited to ride in a mule-drawn wagon with other BCHC members and Friends of the

Inyo. We sat across from Mid Valley member Mary Beth Baglione and her daughter, Anna, and next to Ken and Betty Finch from Kern River Valley unit. Also in the wagon were Marty Jorgensen of San Diego unit, a couple of nice Friends of the Inyo gents, and a family with three cute little kids. Those who valiantly participated in the parade on foot included Mid Valley's own Donna Peterson walking with Patty Heyden, Tammy Alsmann, and Terry Jorgensen from San Diego unit. Thad Chodakauskas and Roland Schmidt, from Santa Ana River unit, carried large banners encouraging everyone to attend BCHC's Rendezvous in Norco next year.

I'm sure you are familiar with the old saying, "Hurry up and wait." That is what parades are

like! As entry #43, we had plenty of time to wait. The 20 mule team hitched to three wagons was beside us in the parade staging area. As the long wait dragged on several of the mules got antsy. Suddenly eight mules decided to reverse direction and get the heck out of there, dragging their teammates with them! Fortunately the skilled outriders and guys on the ground quickly got the mules under control and realigned. We were relieved no one was injured. The skid marks left in the asphalt by the metal wagon wheels, however, will be there for years to come!

The parade finally got moving, only about ten minutes past official start time. Kathy Z. and I had fun pretending to be the Queen doing the "parade wave," greeting spectators as our wagon proceeded down Bishop's main street.

cont'd on Page17

CAROL JO HARGREAVES AND KATHY ZUMBRUNN IN THE PARADE



Mule Days 2012 *(cont'd)*

cont'd from Page 16



Little kids and old people love parades! We could see the joy on their faces as we rolled by. To spectators, the annual Bishop Mule Days Parade provides a glimpse of American history and tradition. The all-equestrian parade is sort of a visual reenactment of how America moved West with the help of mules and wagon trains and is a poignant reminder of the



Michael King, Carol Jo Hargreaves,
Lloyd Erlandson and Kathy Zumbrunn

way things used to be in a simpler time when community was of utmost importance and people reached out to help their neighbors.

As we made our way along the parade route we saw a number of BCHC members among the almost 30,000 spectators waving at us from the sidelines. We saw Mid Valley members Rudy Dezzani and Karen Barindelli; Chip and Linda Herzig of San Geronio Pass unit, and Lynn Joiner of Kern Sierra unit. There were lots of other BCHC folks on the sidelines including Mid Valley members Jon Caudill, Larry Schneider, Gazel Bulotti, Rayma Garcia, Judy Meeks, Doug Decker, Susan Erlandson, Buddy Serpa, Al Baptista and Sunny Sweeney. Also there were Mary and Scott Odell and Mike and Sue Hogeland of San Joaquin Sierra unit; Troy and Susie Patton of Santa Ana River unit; Tom Firth from San Geronio Pass, and Dan Marus of Mother Lode unit. I am certain there were many, many more!

Following the parade, any BCHC member could attend the free Volunteer Luncheon in the Charles Brown Pavilion. We were served meatloaf, a variety of salads, baked beans, fruit cup, rolls and butter, several types of brightly decorated cake for dessert, and all the drinks we wanted from water and sodas to beer.

After lunch we found seats at the east end of the arena for the Grand Entry and much-anticipated awards presentation. Dennis Serpa (BCHC President) and Pete Kriger (BCHC National Director), with their pack stock, represented BCHC in the Grand Entry. Saddle mules, pack mules, wagons, a stage coach, and the 20 mule team began to assemble and circle the arena. Music blared, the national anthem was sung, and announcers Bob Feist and Bob Tallman enthusiastically described the 20 mule team hitch and the antique fire wagon racing around the infield. Eagerly anticipating public announcement of BCHC's honor, my spirits dropped when the announcer read his script and presented the award to "Backcountry PACKERS"! Not once did the crowd hear our organization, BACKCOUNTRY HORSEMEN OF CALIFORNIA, received the 2012 Best Friend of the Packers award!

Oh, well! Those who read the program know the great work BCHC does to preserve recreational stock use on public lands through volunteer service and education. They know that last year our membership donated more than 141,000 hours of volunteer work, the dollar value of which exceeded \$4.5 million! They also know BCHC worked tirelessly in support of commercial packers in Sequoia Kings Canyon National Park.

CONGRATULATIONS, BCHC, BEST FRIEND OF THE PACKERS!!

Story submitted by CJ Hargreaves. Photos by James King & Chip Herzig

BCHC Membership Application

☐ **NEW MEMBERSHIP APPLICATION**

Backcountry Horsemen of California

☐ **RENEWAL APPLICATION**
☐ **CHANGE - () PARENT UNIT () ADDRESS/PHONE/EMAIL () MEMBERSHIP TYPE**
DCTR (YOUR MEMBERSHIP NUMBER) _____

****NEW MEMBERS WILL BE ASSIGNED NUMBER BY MEMBERSHIP COORDINATOR**
PARENT Unit Affiliation: (Select and **CIRCLE ONE** Unit as your Primary Unit Affiliation)

 Antelope Valley
 Eastern Sierra
 High Country
 High Sierra
 Kern River Valley
 Kern Sierra
 Lake-Mendo
 Los Padres

 Mid Valley
 Mother Lode
 North Bay
 Ohlone Riders
 Redbank Riders
 Redwood
 San Diego
 San Geronio

 San Joaquin Sierra
 Santa Ana River
 Sequoia
 Shasta Trinity
 Sierra Freepackers
 Sutter Buttes
 Top of the State

MAIL TO:
BACKCOUNTRY HORSEMEN
OF CALIFORNIA
 PO Box 535
 Beaumont CA 92223

Donate to BCHC Education Fund? Tax Deductible

Packer	\$10.00
Mule Skinner	\$25.00
You're the Greatest	\$50.00

MEMBER'S NAME -No Business Names; Please Print Clearly

SPOUSE/MEMBER'S NAME -MUST SHARE SAME ADDRESS

ADDRESS _____

CITY _____

STATE _____

ZIP _____

PHONE _____

EMAIL ADDRESS _____

TOTAL ENCLOSED: \$ _____

CHECK # _____

DATE SUBMITTED: _____

BUSINESS NAME - DONATIONS ONLY:

PARENT UNIT MEMBERSHIP TYPES: (CIRCLE ONE)

Individual \$40.00* Family \$50.00* Benefactor \$100.00 Patron \$250.00 Mt Whitney \$500.00

*BCHC shares portion of dues with Back Country Horsemen of America

ASSOCIATE MEMBERSHIPS: AN ADDITIONAL \$15.00 PER UNIT IS ADDED TO YOUR PARENT UNIT DUES.
ASSOCIATE MEMBERSHIP UNIT AFFILIATIONS MAY NOT BE FOR THE SAME UNIT AS YOUR PARENT UNIT.

Associate Membership for: _____ \$15.00/unit (Unit Name (from above list))

Associate Membership for: _____ \$15.00/unit (Unit Name (from above list))

Please write additional choices on back

Please clip form along dashed line - KEEP BELOW INFORMATION FOR YOUR RECORDS

PARENT BCHC MEMBERSHIP TYPES

Individual, Family (Shared*), Benefactor, Patron, and Mt Whitney. A Parent Membership is affiliated with a single Local Unit. BCHC members may NOT hold more than one active Parent Membership.

*A SHARED Membership is for two adults with differing last names, each sharing a common address.

ASSOCIATE MEMBERSHIPS

These special Memberships are only available to persons already holding Parent BCHC Membership. No one may sign up for an Associate Membership without 1) having registered one of the Parent Membership types, and 2) having selected Parent Unit affiliation.

- You may sign-up for as many Associate Memberships as you like.
- Associate Memberships may also be initiated at any time during the term of your Parent Membership.
- Associate Memberships must expire concurrently with the Parent Membership, and are renewable only at the time of renewal of the Parent Membership.

 Complete information regarding BCHC Membership is available on the **MEMBERSHIP** page at: <http://www.bchcalifornia.org>

KEEP FOR YOUR RECORDS

I SUBMITTED AN Application Form for:

<input type="checkbox"/> Individual Membership	\$ 40.00
<input type="checkbox"/> Family (Shared) Membership	\$ 50.00
<input type="checkbox"/> Benefactor Membership	\$100.00
<input type="checkbox"/> Patron Membership	\$250.00
<input type="checkbox"/> Mt Whitney Membership	\$500.00
<input type="checkbox"/> Donation - Packer	\$10.00
<input type="checkbox"/> Mule Skinner	\$25.00
<input type="checkbox"/> You're the Greatest!	\$50.00
<input type="checkbox"/> Associate Membership	\$ _____
Total Remittance	\$ _____
Check Number	_____
Date Mailed	_____

 Questions: Contact membership@bchcalifornia.org

Unit News



Redshank Riders - FULLER RIDGE PACK IN Story by Stacy Kuhns - Photos by Michael Lewis

The 1st of July found us doing our second official pack-in for the Forestry Service. The CCC kids were going up for few weeks to Fuller Ridge to do repair maintenance and revamp 12 switchbacks.

We were needed to bring in supplies, food and tools for them. We all met in the morning at the Deer Springs Trailhead to head out. Guru Mike Lewis, Pete Kriger (BCHC State Education Chairman), Mike Gillette, Dan Sullivan, Teri Baron, Stacy, Tim and I loaded our animals with 11 loads to head out. The trail is a beautiful upward 6 mile climb thru redshank, pine, and cedar. The views are outstanding. We saw all the way to Diamond Lake. The animals behaved themselves and made it into camp without shifting or losing a load. We unloaded, ate lunch and headed back down the trail to the trailers. All in all a great day!



Unit News

Grant Awarded for Kelty Meadow Campground Project

Submitted by Joyce Granger - Sierra Freepackers Unit President

The Kelty Meadow Campground Restoration and Facilities Improvement Project are located on the Bass Lake Ranger District of the Sierra National Forest. The project goals are to restore and mitigate riding stock and cattle grazing impacts to aquatic and riparian habitat, improve meadow conditions and upgrade the campground infrastructure with hitching rails, permanent stock water and bear boxes. The Sierra Freepackers were very excited to learn that funding for this project has been provided by the Sierra Nevada Conservancy, an agency of the State of California.

As part of this project The Sierra Freepackers held an outreach event by hosting a packing/camping clinic at the Kelty Meadow Campground in August. There were 3 instructors who helped make this event very educational.

Packing 101 was taught by Mike Esra. He provided great instruction and had both his mule "Bubba" and also iron mules for practice. In addition to learning the "hitches" Mike also provided very useful and valuable tips regarding pack saddle placement, loading & unloading and working around a mule.

Once you get to where you are going a person is looking forward



Instructor Mike Esra teaching box hitch to John Granger

to eating. Denise Robinson gave a demonstration on Dutch Oven Cooking. She made us a wonderful apple cake. We were amazed at the ease in which she was able to make this dish. She also shared some important information with regards to proper food handling in the back county.



Denise Robinson - Dutch Oven Cooking

Many thanks to Mary O'Dell from the Sierra San Joaquin unit who provided us with great information on Leaving No Trace whether camping in pristine or established campsites. She had some good handouts and had a group exercise for us to complete to help take what we learned and make it practical.

Now that the grant has been awarded the Sierra Freepackers will have many projects up and coming. We are excited to be able to upgrade this designated horse campground with needed improvements.



Instructor Mary O'Dell - Leave No Trace

Unit News

BCHA Celebrates “Day of the Cowboy”



On July 28th “National Day of the Cowboy”, BCHA was invited to participate in a celebration at Norco, California. Members from Santa Ana River and San Geronio Pass Units put together a packing demonstration. This gave the units a chance to promote our 2013 Rendezvous which will be held in Norco next March. There were many different horse groups represented with drill teams, driving horses and mules, a variety of carriages, trail trials, team penning and mutton busting. We had a great time and were able to talk to lots of people about what BCHA does and invite them to Rendezvous.



Charlie Chrissy brought her wonderful horses and mules to pack. The crowds, mu-sic and noise were all new to these back-country animals, but they behaved perfectly. It was impressive to see Charlie lead her string in through an obstacle course. Troy Patton did the announcing while on horseback and talked about how cowboys use packing to get their jobs done even in this modern day.

We then unpacked with the help of Char-lie’s friends Steve and Chris, June and Bill Scales, Susie Patton, Pete Krieger, Gary Ulrich and even 4 year old Mylee Patton assisted. A camp was quickly set up and gentle use principals were discussed with the crowd.



Roland Schmitz came in riding Wyatt and leading his mule Spice Girl carrying a tool load to show the crowd how we would get equipment into the backcountry to maintain trails.

Our one hour presentation was well received and our banner reminded everyone to return in March to see more of the Backcountry Horsemen of California at the State Rendezvous.



Submitted by Carol from the Santa Ana River Unit

Unit News

The Edison Pack Trip

Story by Maggie R. Hammon - Submitted by Mary Odell - BCHC SJSU



The A Team
Sandy LaSpada, Katie Hammon,
Debbie McDougald, Rachel Hammon
Mary Odell & Maggie Hammon
(author of article)

On the 24th of June, after a long drive, we arrived at High Sierra Pack Station, about 1 P.M. Once we arrived we unloaded our stock and set up the sleeping bags. John Cunningham offered us the use of one of his tent cabins, my mother readily accepted and we enjoyed the luxurious accommodations. At 6 P.M. we ate hamburgers and rice-crispy. I'll give a description of the average day. We got up a little before 6 A.M. and feed stock at 6. At 7 we ate a very delicious break-fast (eggs, home-made jelly, pancakes and sausage, or bacon.) Thank You Cooks! Then we went off to catch our horses, saddle up and get the mules loaded. At 9 am we would ride out. Usually we rode about 30 or 45 minutes before coming to our first tree. "Tying up" would echo down the trail. Out came the helmets out came, the cross-cut saw, the wonderful loppers, the hammer and wedges, and the bow saw. Depending on the tree(s) we also might need the axe or the peavey. Often someone, usually Sandy, would walk ahead and see what was up the trail and clear what she could by hand. Usually we would find 5 or 6 needed cuts before we moved the stock. Then we would ride for 5 or 10 minutes, and it would start all over again.



We kept doing this until it was time to head back to be in time for dinner at 6 and have all the horse unsaddled and fed. After dinner someone would start the fire and we would all migrate toward the heat and the smoke which helped to drive the mosquitoes away. Some of us would play Mexican Dominoes inside the mosquito tent, but in the end we were all by the fire telling stories and laughing. Then after a while the stories and laughter would peter out and heads would start to nod, exhausted we would go to bed and start over in the early morning.

We averaged about 15 trees or cuts per day however, on Tuesday we made 32 cuts. Our "A-Team" consisted of 7 ladies including Mary, Sandy, Lezlie, my sister Rachael, my mom and I; Debbie McDougal was our fearless leader. After the first day or two each of us seemed to find our 'tool of choice' and the rest of the trail clearing went very smoothly.

Wednesday was our "free day" so we didn't do any trail clearing that day. Instead most of us went 'hot springing' at Mono Hot Springs. Muriel drove us to the hot springs and we sat & soaked for a while, they Jane, Rachael and I went swimming in the river, which was very cold. Rachael stayed at the river and fished with Sandy & Mary, who caught their limit and treated us to fresh fish Wednesday evening. Then we came "home" and had a short nap, we saddled our horses and rode to the resort for an ice cream. Does this sound like a vacation yet??

Thursday was more trail/brush clearing. Friday we finished clearing the trail with a "grand total" of 3 cuts then we rode to Devil's Bathtub. Up at the lake, some of us fished while others napped. Mary, Sandy, Rachael & I caught a total of 5 Brook Trout and brought 4 home to share with the cooks.

The next day, Saturday, we left at about 7:30 am, hoping to avoid a bike race on the narrow road. It was a fun trip and we are looking forward to it next year!



Team Work
Deb McDougald, Rachel Hammon,
Mary Odell, Sandy LaSpada,
& Kate Hammon

Unit News

MID VALLEY UNIT LUCKY CALENDARS

By Michael King and Carol Jo Hargreaves

Greetings!

By now you have most likely heard about Mid Valley Unit's Lucky Calendar fund-raising venture. Mid Valley Unit took on this pilot project to learn how it works and to assist the BCHC State Board in determining whether to conduct a similar fund-raiser in the future.

Mid Valley printed high quality, color photo wall calendars. Every month's pages are chock full of great action shots of unit activities plus there is useful information about BCHC history, objectives, Gentle Use principles, and trail etiquette at the end. Printed on durable paper stock, these long-lasting calendars are a useful tool and a decorative way to stay organized while enjoying BCHC memories at the same time.

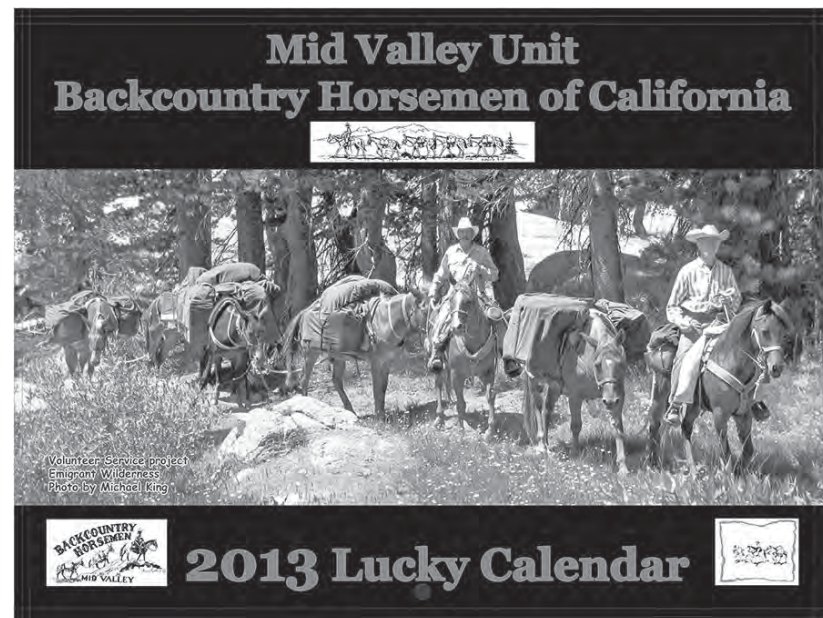
"Why are these calendars lucky?" you might ask. It is because you can win money! What you are really purchasing is a drawing ticket and receiving this one-of-a-kind calendar for FREE. In a nutshell, this is how the drawing works: For the entire year of 2013, every Monday, Wednesday and Friday, there will be a drawing for \$25. Every Saturday there will be a drawing for \$75 and at the end of each month the drawing will be for \$150. On top of that, on January 1, 2013 we will draw a \$500 winner and at the end of the year, December 31, 2013, we will draw a \$1,000 winner!

Every time a ticket is drawn, the information will be recorded and the winner will be sent a check for the prize amount. The winning ticket will be returned to the ticket tumbler for the next drawing. Your chance to win in each scheduled drawing is approximately 1 in 5. In the course of a year there are 216 chances to win and only 1,000 calendars to be sold. These odds are much greater than the California lottery!

Besides getting a calendar for yourself, we're certain you have someone to whom you would like to give a gift, or others whom you would like to acknowledge with a token of appreciation. Think: family members, friends, BCHC members, coworkers, newspaper delivery person, housekeeper, and yard man, anyone who helps you out during the year. A Lucky Calendar is the ideal gift its recipient will use and enjoy all year long. The price is only \$25, which makes it a unique, affordable, and thoughtful gift for anyone.

Mid Valley Unit will bring a supply of Lucky Calendars to the October BCHC State Board Meeting in Visalia. This is a great opportunity to get calendar(s) to you with no additional shipping or handling costs. We will send your calendars home to you with your State Board representative after the meeting, in plenty of time for holiday gift-giving.

Don't delay! Mid Valley Unit is nearing the halfway point in sales, so order your calendars now. Call Michael King at 209-606-8323 or Kathy Zumbrunn at 209-765-4923 to place your order. Thank you for your support!



Actual calendar is in color

Upcoming Events

2013 BCHC Rendezvous in Norco, CA
www.bchcalifornia.org/2013-rendezvous.html

2013 Western States Horse Expo - Jun 7-9th
 Cal Expo Fairgrounds in Sacramento, California
www.horsexpo.com

News You Can Use

What is West Nile virus?

What is West Nile Virus?

West Nile virus (WNV) is a mosquito-borne disease that was originally found in Africa. In 1999, it was detected in the eastern United States; since then the virus has spread throughout the United States and is well established in most states, including California.

How is WNV Spread?

Infected mosquitoes. Most often, WNV is spread by the bite of an infected mosquito. Mosquitoes are WNV carriers ("vectors") that become infected when they feed on infected birds. Infected mosquitoes can then spread WNV to humans and other animals when they bite.

Transfusions, transplants, and mother-to-child. All donated blood is checked for WNV before being used. The risk of getting WNV through blood transfusions and organ transplants is very small, and should not prevent people who need surgery from having it. Transmission during pregnancy from mother to baby or transmission to an infant via breast-feeding is extremely rare.

Not through touching. WNV is not spread through casual contact such as touching or kissing a person with the virus, or by breathing in the virus.

How can I reduce the risk of being infected with WNV?

A person can reduce their risk of WNV infection by:

Staying indoors at dawn and dusk when mosquitoes are most active.

Using a repellent containing the active ingredients DEET, Picaridin, oil of lemon eucalyptus, or IR3535 before going outdoors.

Dumping or draining water that has been standing for more than three days, including neglected swimming pools, birdbaths, pet dishes, tire swings, and flower planters.

These items provide a perfect place for mosquitos to lay their eggs, which increases the risk of being infected with WNV.

Repairing broken or torn screens on windows and doors to keep mosquitoes from entering your home.

How soon do infected people get sick?

People typically develop symptoms from 3 to 14 days after they are bitten by an infected mosquito.

What are the symptoms of WNV?

WNV affects the central nervous system. However, symptoms vary

Serious symptoms in a few people. Less than one percent of individuals (about 1 in 150 people) infected with WNV will develop severe illness. The severe symptoms can include high fever, headache, neck stiffness, stupor, disorientation, coma, tremors, convulsions, muscle weakness, vision loss, numbness and paralysis. These symptoms may last several weeks, and neurological effects may be permanent. WNV infection can be fatal.

Milder symptoms in some people. Up to 20 percent of the people (about 1 in 5) who become infected will display symptoms which can include fever, headache, body aches, nausea, vomiting, and sometimes swollen lymph glands or a skin rash on the chest, stomach and back. Symptoms generally last for just a few days, although even previously healthy people have been sick for several weeks.

No symptoms in most people. Approximately 80 percent of people (about 4 out of 5) who are infected with WNV will not show any symptoms.

Can pets get sick with WNV?

Dogs and cats can be exposed to WNV in the same way as humans. However, these animals are very resistant to WNV and rarely become ill. Concerned pet owners should consult with a veterinarian. For more information, on dogs, cats and WNV, please visit the Centers for Disease Control and Prevention website: http://www.cdc.gov/ncidod/dvbid/westnile/qa/wnv_dogs_cats.htm

Like people, most horses bitten by mosquitoes will not become sick with WNV. However, of those that do become ill, clinical signs may include stumbling, circling, hind leg weakness, inability to stand, muscle tremors, and death. A vaccine to prevent WNV is available for horses and horse-owners should consult with a veterinarian about the WNV vaccine and other vaccines against mosquito-borne viruses, such as western equine encephalitis. For more information on WNV and horses, please visit the California Department of Food and Agriculture website at http://www.cdffa.ca.gov/ahfss/Animal_Health/WNV_Info.html

What should I do if I find a dead bird or tree squirrel?

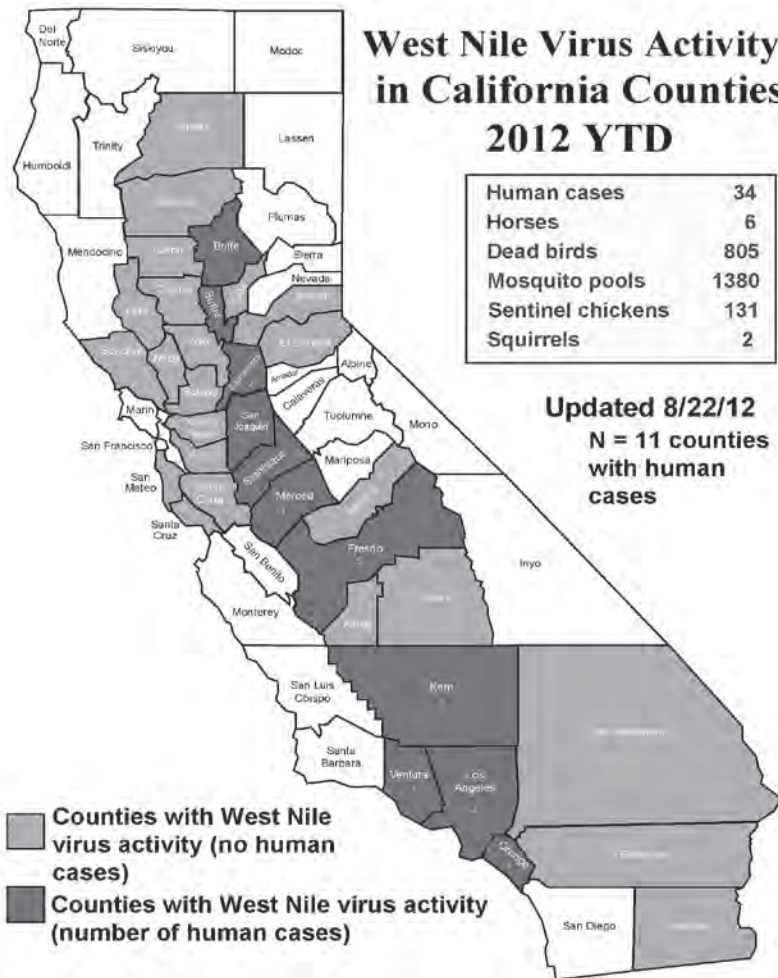
If you find a dead bird, particularly a crow, jay, magpie, raven, sparrow, finch, or raptor, or dead tree squirrel, please file an online report at www.westnile.ca.gov or call toll-free 1-877-WNV-BIRD

Dead bird and dead tree squirrel reports are very important because they are usually the first indication that the virus is active in an area, and this allows CDPH to monitor the virus throughout the year.

News You Can Use

LATEST WEST NILE VIRUS ACTIVITY IN CALIFORNIA

West Nile Virus Activity in California Counties 2012 YTD



Human data is updated every Tuesday and Friday by 4pm. Dead bird and squirrel data are updated every Wednesday and Friday by 4pm. Horse, mosquito and sentinel chicken data are updated on Fridays by 4pm.

<http://www.westnile.ca.gov/>



675 N 600 W Suite #3,
Logan, UT 84321
(800) 742-7047

Logan Coach Rebate Program

Exclusive to BCH Members

As a special rebate for Backcountry Horseman members, Logan Coach will give the following rebates/donations when you purchase a new Logan Coach trailer:

- .5% of Retail Price Paid Donated to BCH State Organization
- .5% of Retail Price Paid Donated to Customer's Local BCH Chapter
- .5% of Retail Price Paid as Rebate back to Customer

Ask Your Logan Coach Dealer for details.

See the 2012 Logan Coach Line at www.LoganCoach.com

All you will need to get the rebates sent out is a copy of the invoice for the Logan trailer you purchased from the retail purchaser & what your unit & state is.

You can send that directly to Steve Hales ~ Logan Coach
Phone (435) 752-3737 Fax (435) 752-3756

The deadline for submissions for the
WINTER EDITION

of the Backcountry News is:

December 19, 2012

Send submissions to BCHC.News@gmail.com

or mail to: Rhonda Strickland

Restless Designs

30201 Yellow Feather Dr., Canyon Lake, CA 92587

Unit News

WOODSMOKE - Backcountry Experiences

There are a group of us BCHC types that like to camp out any time we have a chance. This activity can cross the spectrum of possibilities from the National Parks, designated wilderness and even the State Parks upon occasion. Whether it be in the purple sage, the sand dunes or the star-studded spine of the Sierras we invariably share a campfire.

The freedom of the flames is corralled within a portable fire pit or within a hearth of rocks stacked in a circle. Under rare circumstances, like that time in the Greenhorns, the rain has forced us under an overhang where we watched the shadows dancing across the roof just like our ancestors have done for thousands of years.

With fire permit in hand and shovel nearby we have relaxed as much as the nomadic flames would allow. I don't know about you but it seems like every time I get seated and comfortable the smoke is drawn to me like a magnet. Nobody else typically has this problem; they just sit there and grin at me through the haze.

Trying to make the best of an annoying situation a get up and move my chair three or four time until I finally give up. Eventually I resign myself to the inevitable and drift along with the wisps of smoke to memories of the past.

Recently we had a trail trials in Keyesville and a group of us were gathered around the community campfire. We began to recall the participants of the day and ten year old Ann Keverlines name came up as a seasoned horse veteran. Ann has been riding since she was five and seeing her sit her spirited pony reminded me of when my children started riding, also at the tender age of five. The course of the conversation transported me back to a time before my children came along.

I remember moving into the Kern River Valley back in 1974 to go to work at Camp Owen as a counselor. Some of my colleagues liked to combine their love of fishing with backpacking trips into the high lonesome. Being a bachelor, with not a lot of money, it seemed like a pleasant way to pass the time so off to the woods

I would go. The years and the injuries started to pile up and by 1985 I felt the only way I was going to be able to continue to enjoy the outback was on horseback.

Laina came along in 1987 and by 1990 Anthony had arrived. In 1992 I realized if the kids were going to get to experience the legacy of the grand highlands it was going to have to be done by equine caravan. I just wasn't up to the task of carrying my backpack, the common equipment and their gear into the wilderness also. Of course we did the day loops out of the campsites but Anthony was an avid fisherman and the best fishing was in the pristine creeks located far and away in places like The Golden Trout Wilderness.

Over a span of years I accumulated lasting memories and packed them like gold coin in the saddlebags of my mind to be carried around wherever I went. Memories of quality time spent with my wife and friends watching my children grow, learning how to fish, how to build a fire, having fun, getting dirty, and learning the skills of being out in the deep woods. Yes, and also teaching them about their sacred wilderness legacy and the responsibility to leave it better than they found it.

So the next time I see you, hopefully accompanied by your family and friends, we will be sitting around the campfire together peering through the wood smoke and I will know that no matter what mode of transportation you used to arrive there, you are enjoying the pursuit of happiness and the freedom of your public lands. And that my friend is as it should be.

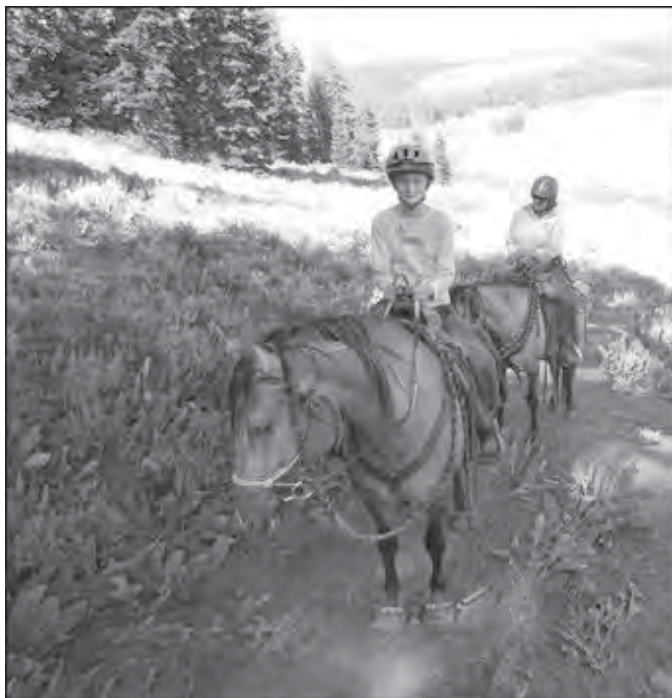
Submitted by Mike Hughes
BCHC Kern River Valley Unit



Unit News

A Wonderful Camping Experience *written by Maya Schulz*

On August 2nd, Iris Klugherz, Cindy McMurry, Cathy Zandstra, Valerie Lantz and I left home for a camping trip at Soup Springs. When we got there, we settled ourselves and the horses in and ate peanut butter and jelly sandwiches for lunch. After lunch we saddled up the horses and went on a very eventful trail ride. The scenery was beautiful. When we got back to camp, we put the horses away and made spaghetti in a Dutch oven for dinner. Ben Zandstra came over to spend the night, and he taught us some songs while we cooked marshmallows. Then we went to bed.



The next morning, we took care of the horses, ate biscuits and gravy for breakfast, and went for another trail ride. As we were going down the trail, we ran into a cattle drive and we got to help. After that we took a lunch break. Then we went back and had hamburgers for dinner. After dinner, it was time to go home. That was a very fun experience that left everyone happy and wanting more! I would like to thank all of the people who made this experience enjoyable.



Story & photos submitted by Valerie Lantz, High Country Unit. This article is written by Maya Schulz and is about her first trail riding and camping trip. She had several riding and Gentle Use lessons prior to the trip in July, 2012. Maya is 11 years old. She helped plan the menu and prepare the camp food. Her parents joined BCHC so Maya can participate in BCHC activities. Her friend Iris came on the trip too. She rode a BLM Mustang mare named Sophie.

Information

WELCOME, NEW MEMBERS!

The following new members have joined BCHC APR - AUG 2012

Antelope Valley	Cynthia Brickner & Rich Farrell Debie Petersen
Eastern Sierra	Megan Mallowney
High Country	David Schulz Arthur Stackhouse Wayne Stai
High Sierra	Dr. Karen Marie Erickson Christopher & Dana Glines Nick & Tricia Hilvers Dano McGinn & Elizabeth Eubanks Billy J. & Brooke Prewitt Billie & Christine Skaggs
Kern River Valley	Mike & Rhonda Rupert
Lake-Mendo	Cheryl C. Cole
Los Padres	Greg Feinberg & Shirley Rasmussen Michele Meyerink & Donnie Hampl Leona & Steve Michaud Deah Rudd
Mid Valley	David & Suzanne Bartels Tammara Blanton Ed & Goldie Bolitho Spring Bourn & Jeff Baker Jackie Campidonica Chris A. & Kathie A. Danicourt Paul & Corky Fellingham Ami McBride Ramona Ruskamp Lana & Reine Sloan Jim Strong
Mother Lode	Lucy Badenhoop Lynelle Coyle & Jamie Fish Mary Ellingsworth Shirley Koch Jere Schaeffer & Connie Hooten
North Bay	Tricia Henry Jane Thomason & Elise, Paul & Nick Peterzell Debbie Watson
Ohlone Riders	Teri Lynn Baron
Redshank Riders	Kimberly & Jesse Flores Jennifer Anne & Brian Forster Joan Mattman Teresa Schwarz Joanne Thacher
Redwood	Mary Barber Sherrie R. Eaves Gail Leavitt Cherie Ann Shipley Rochelle & Roger Vernon Linda Wall
San Diego	Maria Biondo Longton
San Gorgonio Pass	Donald & Robin Balch
San Joaquin Sierra	Joanne M. Caffrey & Michael W. Scholl Warner Dozier Lezli Endicott Fred Mahoney Tom Smart Tara Stephenson

NEW MEMBERS, *continued*

San Joaquin Sierra (cont'd)	Randy & Tammy Weaver Jarrad Wilson
Santa Ana River	Lori Gunter-Haug Hank & Debi Schleuning Stephanie & John Smith Karen Weiss Amanda Willis & Brett Burgen
Sequoia	Hilary A. Evans Gwen Gardner Clifford Mesedahl Sopac McCarthy Mulholland Shobharani Reddy Timothy Short Geoff Wiggs
Shasta Trinity	Shelly Callahan Kim & Dave Hallet Bryce Hathaway Julian Frazer & Beth Rainsford Audra Homicz Dano McGinn & Elizabeth Eubanks Greg Mittelstadt
Steinbeck Country	Jeffrey Wilson & Richard Wilson
Sutter Buttes	Dan Biggers Marvin & Kerri Duncan
Top Of The State	Hanna Gomes Gary Kleaver & Cole Kleaver

A great Summer read or present for mountain lovers!



Pack mules, ride horses, & explore the High Sierras as you journey through...

Campfires Remembered:
Memoirs of a Mountain lady
(With over 30 mountain photos)

To order your signed copy:
Send \$14.95, plus \$4 shipping to:
Campfires Remembered - Dena M. Mercer
P.O. Box 5417
Ventura, Ca. 93005

Or order online and learn more at: www.CampfiresRemembered.com

PAID ADVERTISEMENT

Information

SAVE TIME AND MONEY BY SHOPPING ONLINE!

Earn **cash back** while shopping from home! Search for deals such as free shipping, instant savings, coupons, and more by visiting www.zamzuu.com/bchc

Some of the key features you'll find on the BCHC shopping website include:

- Apparel and Accessories\
- Automotive
- Electronics
- Health and Beauty
- Home and Garden
- Movies, Music and Entertainment



The Ultimate Shopping Experience!

Please help to make this exciting new program a success for the Backcountry Horsemen of California!

Book all travel at:

www.ytbtravel.com/bchc

Start shopping on-line at: www.zamzuu.com/bchc

GoodDining

You Dine, We Give!



Dining to Support Back Country Horsemen of America - BCHA
Your Supporters Can Earn Up To 6% When They Dine

www.goodsearch.com

THE BCHC EDUCATION FUND IS A 501(c)3 NONPROFIT ORGANIZATION

A donation in the amount of your choice is tax deductible.

You can now donate easily and quickly, using a major credit card or PayPal.

Simply go to the BCHC website (bchcalifornia.org),

Scroll down to the bottom of any page, press the **DONATE** button and help us in our many efforts.

THANK YOU!



Executive committee meeting at the Kennedy Meadows Resort and Pack Station.

Photos submitted by Kaye Bruns

Recognition of Special Individuals

THANK YOU FOR YOUR SUPPORT!!

Benefactor Funds are used in a variety of ways to support BCHC's Public Lands activities. Uses of Benefactor Funds may include but are not limited to hiring consultants to perform in-depth reviews, financing special studies and reports, and reducing out-of-pocket travel expenses for those who testify at state and federal hearings.

BENEFACTORS

Antelope Valley	Carlos and Laurie Cabeza De Vaca Stephen & Marry Ann Colf Heidi Furer & Latha Hylton
Eastern Sierra	John D. Brown, III & Susan L. Harms Bill Carter Michelle Layne Vince and Doreen Patrizio Billy J. & Brooke Prewitt James B. and Judy L. Waggoner
High Sierra	Richard and Dena Cochran Ruth and Grant Gerson Dennis and Cathlyn A. Keller
Kern River Valley Kern Sierra	Ken and Betty Finch Boyce 'Buzz' R. & Joann F. Caffee Mylon and Pat Filkins Edith Frick Don and Donna James Scott Rogers & Grant Rogers
Los Padres	Robert E. Acquistapace Otis Calef Robin Cederlof William Chaides and Nancy Kimmell Eve, Sean, Sarah & Jacob Devine Si & Karen Jenkins Mike and Mary Ann Mallory Richard Renck Glenn and Karen Teixeira Michael Vaughan
Mid Valley	Karen Barindelli Jay and Elizabeth Barnes Gary A. and Michelle L. Cain Jackie Conner Dennise A. Davis Rien and Lieske Doornenbal Lloyd and Susan Erlandson Carol Jo Hargreaves & Larry Schneider Jim Huffman David and Kristine Kraft MID VALLEY UNIT - BCHC Janice D., Kelly & Lars Paulsen Dennis M. and Loretta Serpa Daniel and Carole Sweet Kathy Zumbrunn & Jon Caudill
Mother Lode North Bay	Ken and Gerry Bourn Victoria Harris Alan and Carolyn Mahoney

BENEFACTORS, *continued*

Ohlone Riders	Robert Ferrand Sarah & David Schoen
Redshank Riders	Elaine E. Hill & John H. Schoettler Gregory and Deborah Long Ken and Allison Renck
Redwood San Diego	Maris Hawkins Susanne Holenstein Holly and Dan Salzman Lynda & Michael Sterns
San Gorgonio Pass	Paul "Chip" and Linda Herzig Susanne Holenstein Ron and Korky Robertson
San Joaquin Sierra	Ernest C. Burroughs John and Jenise Cunningham Kenneth and Diane Dalby Toby and Katie Horst Carol Ann & Glen Patterson Linda Steiner Jamie Throgmorton
Santa Ana River Sequoia	Pat and Maia Wolff Charles and Dahne Airoza Jamie Wilson, DVM Larry and Jody Young Douglas and Shawna Powell
Shasta Trinity Sutter Buttes	Larry E. Kling Corky Layne Ulla Park Shirley Sherwood

MT. WHITNEY

San Gorgonio Pass	Peter and Diana Kriger
Kern River Valley	Ken & Betty Finch

PATRONS

High Sierra	Stan Barnes Jeff and Alice Kampen Marty Morehart Karl and Trish Pendegraft Vincent and Donna Zaninovich
Kern Sierra Mid Valley Sequoia	Terri Arington Jim and Pat Holly Larry and Jody Young



WANT TO START A NEW UNIT?

If there is no unit in your area and you are interested in starting one, contact BCHC Secretary Kaye Bruns for more information.

(661) 944-4927

BCHC Units Around the State

Antelope Valley

PO Box 84
Pearblossom, CA 93553
June Frisbey
(661) 944-3601
jfrisbey@gmail.com

Eastern Sierra

202 Sierra Grande
Bishop, CA 93514
Florene Trainor
(760) 872-2215
florenetrainor@yahoo.com

High Country

PO Box 1672
Alturas, CA 96101
Alan Cain
530-233-4062

High Sierra

PO Box 4427
Visalia, CA 93278-4427
Robert Herrick
(559) 638-2448
tntvet@aol.com

Kern River Valley

3561 Jeffrey St.
Lake Isabella, CA 93240
Larry Cigainero
(760) 379-5920
larrybchc@aol.com

Kern Sierra

PO Box 80174
Bakersfield, CA 93380
Robert Anderson
(661) 978-9630
lazy01@yahoo.com

Lake-Mendo

PO Box 1201
Lakeport, CA 95453
Paul Villanueva
(707) 263-0147
Villan13@pacific.net

Los Padres

PO Box 1857
Paso Robles, CA 93447
William Chaides
(805) 471-1197
bchaides@tcsn.net

Mid Valley

PO Box 1709
Modesto, CA 95353
Michael King
(209) 606-8393
mickngig@sbcglobal.net

Mother Lode

PO Box 2088
Elk Grove, CA 95759-2088
Mike Kohlbaker
(916) 214-6505
4horsen@sbcglobal.net

North Bay

1055 W College Ave
PMB 153
Santa Rosa, CA 95401-5036
Thor Bodtker
(415) 328-4545
thunder.t@hotmail.com

Ohlone Riders

PO Box 5262
San Jose, CA 95150-5262
Kathy Woods
(408) 266-9828
ksmithwoods@yahoo.com

Redshank Riders

PO Box 383
Aguanga, CA 92536-0383
Stacy Kuhns
(909) 633-1705
stacykuhns@aol.com

Redwood

PO Box 792,
Ferndale, CA 95536
Carole Polasek
(707) 786-9637
muleride@frontiernet.net

San Diego

236 Oak St
Ramona, CA 92065-1952
Cheryl Wegner
(760) 788-0354
president@bchcsd.com

San Geronio Pass

28797 Live Oak Cyn Rd.
Redlands, CA 92373
Pete Kriger
(909) 910-4619
pkrigerjr@yahoo.com

San Joaquin Sierra

PO Box 25353
Fresno, CA 93729
John Mikkelsen
(559) 289-4911
jessecowboy@comcast.net

Santa Ana River

PO Box 736
Norco, CA 92860
Thad Chodakauskas
(951) 312-0724
ctchod@aol.com

Sequoia

PO Box 456
Springville, CA 93265
Jan Walker
(559) 310-5794
qhbrat@hotmail.com

Shasta Trinity

PO Box 287
Anderson, CA 96007
Sam Burrows
(530) 547-5975
sburrows@frontiernet.net

Sierra Freepackers

PO Box 64
Oakhurst, CA 93644-0064
Joyce Granger
(559) 283-4058
cmj@sti.net

Steinbeck Country (New)

3116 Lake Dr #32,
Marina, CA 93933
Lisa Deas
(831) 402-7482
muledaze@yahoo.com

Sutter Buttes

110 Medley Lane
Oroville, CA 95966-9649
Bob Gage
(530) 521-7369
bobgage@wildblue.net

Top of the State

PO Box 461
Etna, CA 96027-0461
Joe Croteau
(530) 468-2339
jjcroteau@sisqtel.net

Membership Matters

Contact Membership Coordinators, Chip & Linda Herzig. They will be happy to address your questions or concerns.

Chip & Linda may be reached
Monday through Friday.

By mail: BCHC Membership
PO Box 535, Beaumont CA 92223
Email: membership@bchcalifornia.org
By toll free phone: (866) 748-2033.
In 951 area code: (951) 769-3781



Planning a Trip? Use

**BCHC
EARNS 60%
OF THE
COMMISSIONS!
For the Latest Deals**



go to
www.ytbtravel.com/bchc

- You will find the same airlines, hotels, rental cars and cruises as on other travel websites!
- You'll get great travel prices!
- Each time you book travel a portion of the travel commissions will go to support BCHC!

It's that simple!



Custom Saddles by Steve Edwards

We make custom saddles...
From "Show" to "Go"



The Cowboy Saddle

Made with trail riding, working and showing in mind for you and your mule or donkey. Lightweight but tough!
Available in 14", 15", 16" or 17" seat
Starting at \$990 plus s/h



Trail Rider Lite

Steve Edwards Signature Series line. Lightweight only 18lbs. Leather & Cordura saddle built on Steve's TREE that Steve has used since 1986. The bars are a proven great fit on all mules. The Trail Lite only comes with a padded seat. Steve has developed a video to help you place your saddle, brichen, breast collar, cinches in the correct positions. Starting at \$890 (plus s/h)



The newest Steve Edwards Signature Series Saddle...The Trail Lite Elite
Brown all leather pommel, seat, and cantel. Black heavy duty 2000 Lear cordura fenders and skirt. These saddles are proven tough. I use these saddles working around the ranch for all ranch work and just going down the trail. Buy this saddle "while in stock" and you will get a Steve Edwards pad and two cinches! Starting at \$925 plus \$60 s/h



Signature Series mule head conchos exclusively on Steve Edwards tack. You will not find these beautiful conchos anywhere else!



New Saddle Pad Colors!

Heavy Duty or Close Contact Mule and Donkey Saddle Pads

These high tech mule pads are designed and field tested by Steve Edwards and his packers, specifically to fit mules and donkeys. Features soft, colorfast Herculon tops, genuine buffalo leather, and non-slip, antibacterial bottom. Provides comfort for the mule and rider!

Heavy Duty Pads \$125 plus \$20 s/h
Close Contact Mule Pads \$95 plus \$20 s/h

Don't Ask Me...Ask My Clients!

I wanted to let you know how happy I am with the purchase of my new mule saddle and accessories. I absolutely love everything about it, mostly the high back. My mule didn't grunt when going down steep hills as he has in the past while I was using a crupper. We rode four hours on the first ride with your saddle and had no sores anywhere (on me or the mule). Thanks for a great product and the best service I've received on any internet purchase I have ever made. I feel as if I've made a friend and not just someone wanting to make a sale. I knew I had made the right choice when you called back to make sure I got everything I had ordered and to help answer any and all of my silly questions. --Thanks so much, Toby Cook

Queen Valley Mule Ranch Steve & Susan Edwards 602/999-MULE(6853)

1855 W. Running Deer, Queen Valley, AZ 85118
steve@muleranch.com www.muleranch.com
View our entire selection of mule saddles and tack online.

Remember...the more you buy the less you pay so HURRY today and call Steve at (603)999-6893 and tell him you saw this ad in the voice of the mule and donkey world, Mules and More magazine



Steve Edwards Collection of Instructional Videos
Check out Steve's website www.muleranch.com for his full line of instruction videos, which cover topics from Communicating with Mules, to Driving and Packing Basics, to Hobbling, Highlining and Picketing, to Colt Starting, to Fixing the Problem Mule!